

# ATTENUATOR FLANGE MOUNT 100 WATT



DATA SHEET

PART SERIES: 33P7024F

SHEET 1 OF 2  
Dwg 1015315

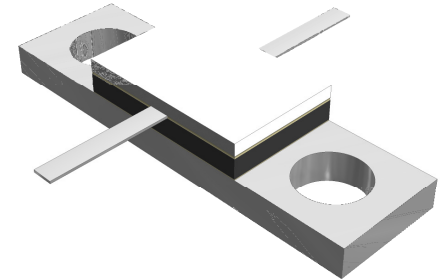
EN 15-1377  
Revision -

## FEATURES

- Tab Launch
- High Power
- Integrated Heat Sink
- Low VSWR
- Easy Installation
- Low Passive Intermodulation

## APPLICATIONS

- Mobile Networks
- Broadcast
- High Power Amplifiers
- Isolators
- Instrumentation



## GENERAL DESCRIPTION

EMC Technology offers the widest selection of flange mount attenuators worldwide. High power flange components offer excellent performance and the convenience of bolt on installation.

## ORDERING INFORMATION

Part Identifier:

33P7024XX.XXF

Attenuation Value

## SPECIFICATIONS

### 1.0 ELECTRICAL

Nominal Impedance:	50 ohms
Frequency Range:	DC - 2.7 GHz
Attenuation Values Available:	1-20, 30dB
Attenuation Accuracy:	1-10 dB $\pm$ 0.5 dB 11-20 dB $\pm$ 1.0 dB 30 dB $\pm$ 1.5 dB
Input Power CW:	100 watts @ 100°C heat sink, derated linearly to zero power at 150°C
Peak Power:	1000 watts (based on 10 $\mu$ s pulse width and 1% duty cycle)
VSWR:	1.20:1 Max (DC - 2.5 GHz) 1.30:1 Max (2.5 - 2.7 GHz)
Passive Intermodulation:	-108 dBc Max (2 x 43 dBm Input @ 1.9 GHz Band)

### 2.0 ENVIRONMENTAL

Operating Temperature:	-55°C to +150°C
Non-operating Temperature:	-65°C to +150°C
Temperature Coefficient:	+/-200 PPM / °C max

### 3.0 MARKING

Unit Marking:	Logo, Part Number
---------------	-------------------

### 4.0 QUALITY ASSURANCE

Sample Inspect Per MIL-STD-105, Level II, 1.0% AQL.

Visual and Mechanical Examination for Conformance To Outline Drawing Requirements.  
Measure Attenuation and VSWR  
Data Retention – Standard

# ATTENUATOR FLANGE MOUNT 100 WATT



DATA SHEET

PART SERIES: 33P7024F

SHEET 2 OF 2  
Dwg 1015315

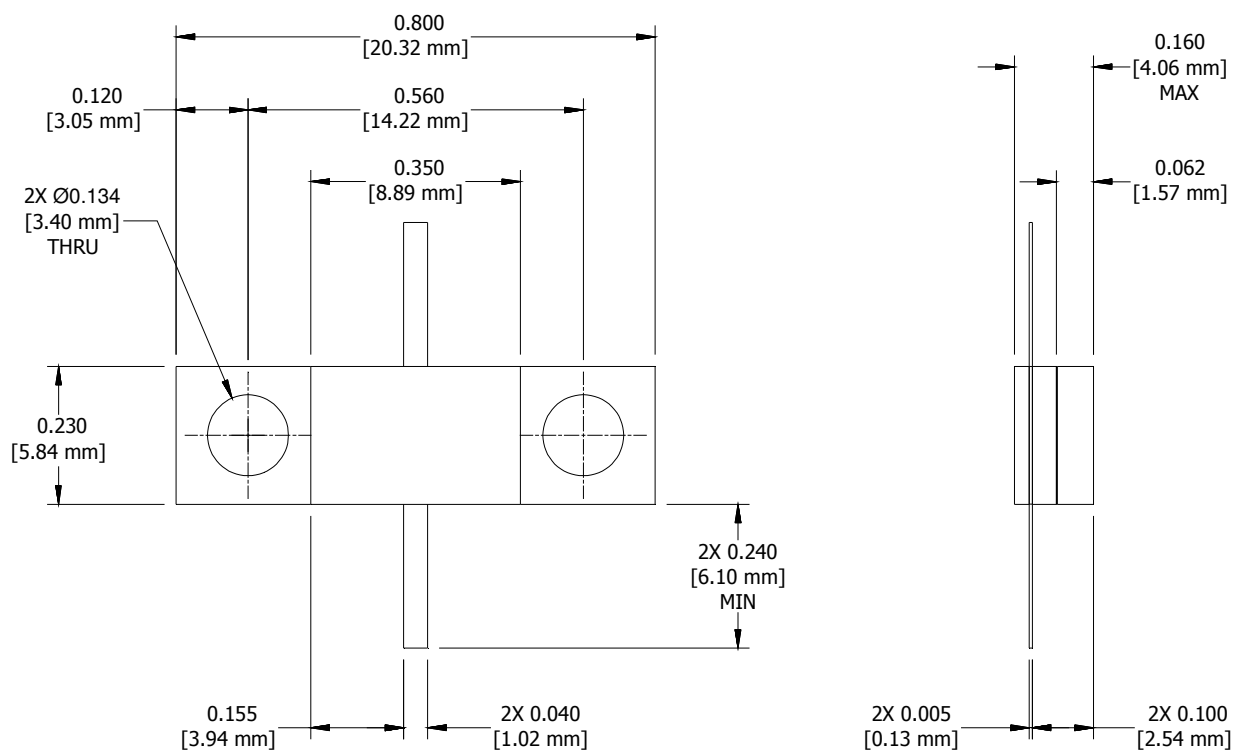
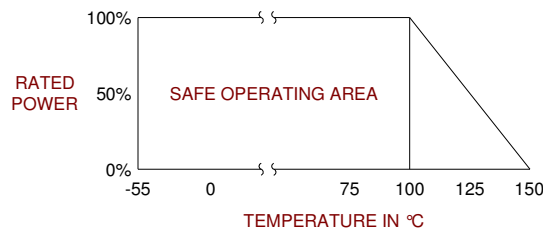
EN 15-1377  
Revision -

## 5.0 PACKAGING

Standard Packaging: Tray

## 6.0 MECHANICAL

Substrate Material: Aluminum Nitride  
Resistive Film: Thin Film  
Cover Material: Alumina  
Tab Material: Beryllium Copper  
Tab Finish: Silver Plated  
Flange Material: Copper  
Flange Finish: Nickel Plated  
Metric Dimensions: Provided for reference only



Unless Otherwise Specified: TOLERANCE: X.XX = ± 0.02 X.XXX = ± 0.010