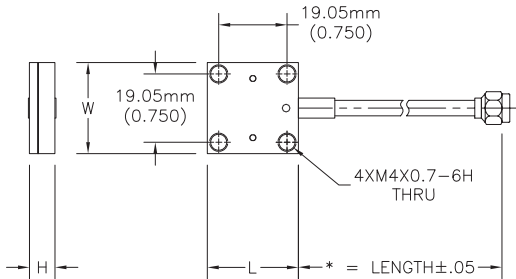
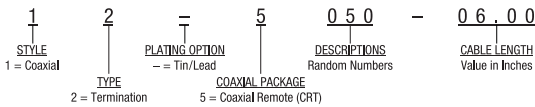


12 Series CRT



* LENGTH VARIES BY CUSTOMER SPECIFICATIONS.

Part Numbering Code



For applications where a high power termination is required to be remotely located, the series Coaxial Remote Terminations feature integral coaxial cable inputs. They also offer ultra low VSWR. These devices decrease the number of interconnections in your system at reduced cost over a discrete cable and termination or attenuator approach.

Specifications

Resistance	50 Ohms +/-5%
Cable Length	4 to 28 inches
Power	20 to 500 Watts
Frequency Range	DC to 6 GHz
Power Rating	100% @ 100°C at the heatsink
Derates to	0% @ 150 °C
Operating Temperature	-55 °C to 150 °C
Standard Connectors	SMA and Type N*
Substrates	BeO or AlN
Resistive Element	Thin Film
Housing Base	Aluminum, Tri-Metal Plated
Housing Cover Cable	Aluminum, Iridited
Cable	Braided Jacket, Hand-Formable *
Coaxial Connector	SMA Male Connector *
Connector Body	Stainless Steel, Gold Plated
Center Contact	Copper Weld, Silver Plated
Coupling Nut	Stainless Steel, Passivated

* Other cables, & connector types available upon request. Also Polyolefin (shrink tubing) jacket

Power Watt	Frequency GHz	VSWR Max	Substrate	L		W		H		Part Series #
				mm	[inches]	mm	[inches]	mm	[inches]	
20	10.0	1.35	BeO	10.16	[0.400]	12.70	[0.500]	8.51	[0.335]	12-5028
60	2.0	1.08	AlN	22.00	[0.866]	22.00	[0.866]	10.16	[0.400]	12-5042
60	8.0	1.35	BeO	15.24	[0.600]	17.78	[0.700]	7.62	[0.300]	12-5032
60	5.0	1.40	BeO	22.00	[0.866]	22.00	[0.866]	10.16	[0.400]	12-5007
150	2.0	1.10	AlN	22.00	[0.866]	22.00	[0.866]	10.16	[0.400]	12-5050
150	2.0	1.20	BeO	24.49	[0.964]	24.49	[0.964]	10.16	[0.400]	12-5049
150	2.0	1.20	BeO	22.00	[0.866]	22.00	[0.866]	10.16	[0.400]	12-5029
150	2.0	1.10	BeO	15.24	[0.600]	17.78	[0.700]	8.89	[0.350]	12-5021
150	2.0	1.40	BeO	24.49	[0.964]	24.49	[0.964]	10.16	[0.400]	12-5014
150	2.0	1.10	BeO	22.00	[0.866]	22.00	[0.866]	10.16	[0.400]	12-5013
150	2.0	1.10	BeO	24.49	[0.964]	24.49	[0.964]	10.16	[0.400]	12-5012
150	2.0	1.10	BeO	24.49	[0.964]	24.49	[0.964]	10.16	[0.400]	12-5005
250	2.0	1.08	BeO	25.40	[1.000]	25.40	[1.000]	7.11	[0.280]	12-5051
500	2.5	1.20	BeO	25.40	[1.000]	25.40	[1.000]	7.11	[0.280]	12-5061

Power ratings are based on 100°C heat sink, except for CT2335A, which is 85°C

*** is a place holder for cable length in inches.