

**TITLE: SPECIFICATION CONTROL DRAWING**

**PART IDENTIFIER:** 13-125-TP

**DESCRIPTION:** PILL TERMINATION

**ASSEMBLY DWG:** 1400234

**1.0 SPECIFICATIONS:**

**1.1 ELECTRICAL:**

- 1.1.1 IMPEDANCE: 50 OHMS NOMINAL.
- 1.1.2 FREQUENCY: DC-26.5 GHZ.
- 1.1.3 INPUT POWER (MAX @ 25°C): (DERATED LINEARLY TO ZERO POWER @ 150°C)
  - 1.1.3.1 AVERAGE: 3 WATT.
  - 1.1.3.2 PEAK: 100 WATTS, 100US PULSE WIDTH @ 0.1% DUTY CYCLE.
- 1.1.4 VSWR: 1.35 MAX.
- 1.1.5 SCHEMATIC: SEE SHEET 2, FIG. 2.

**1.2 MECHANICAL:**

- 1.2.1 OUTLINE DWG: SEE SHEET 2, FIGURE 1.
- 1.2.2 WORKMANSHIP: PER MIL-D-39030.

**1.3 ENVIRONMENTAL:**

- 1.3.1 TEMPERATURE RANGE:
  - 1.3.1.1 NON-OPERATING: -55°C TO +150°C.
  - 1.3.1.2 OPERATING: -55°C TO +150°C.

**2.0 UNIT MARKING:** "13-125-TP AND EMCT"

LEGIBILITY AND PERMANENCY PER MIL-STD-130.

**3.0 QUALITY ASSURANCE:**

- 3.1 PERFORM INSPECTION IN ACCORDANCE WITH QA0006 AND FORM0357 FOR COMMERCIAL GRADE PRODUCT.
- 3.2 TEST DATA REQUIREMENTS:
  - 3.2.1 NO TEST DATA REQUIRED FOR CUSTOMER.
  - 3.2.2 DATA RETENTION: 24 MONTHS.

**4.0 PACKAGING:** STANDARD PACK PER MC0023.

<b>ENG</b>		<b>PUR</b>		<b>MFG</b>		<b>PLAN</b>		<b>SM</b>	
<b>CC</b>				<b>QA</b>					
<b>EMC TECHNOLOGY, INC</b>		<b>CAGE CODE # 24602</b>				<b>DWG #</b>	1004645000		
<b>1971 OLD CUTHBERT ROAD</b>		<b>CHANGE NOTICE</b>	EN 01-401			<b>REV LVL</b>	E		
<b>CHERRY HILL, NJ 08034</b>						<b>SHEET</b>	1 OF 2		

PART ID REF

13-125-TP

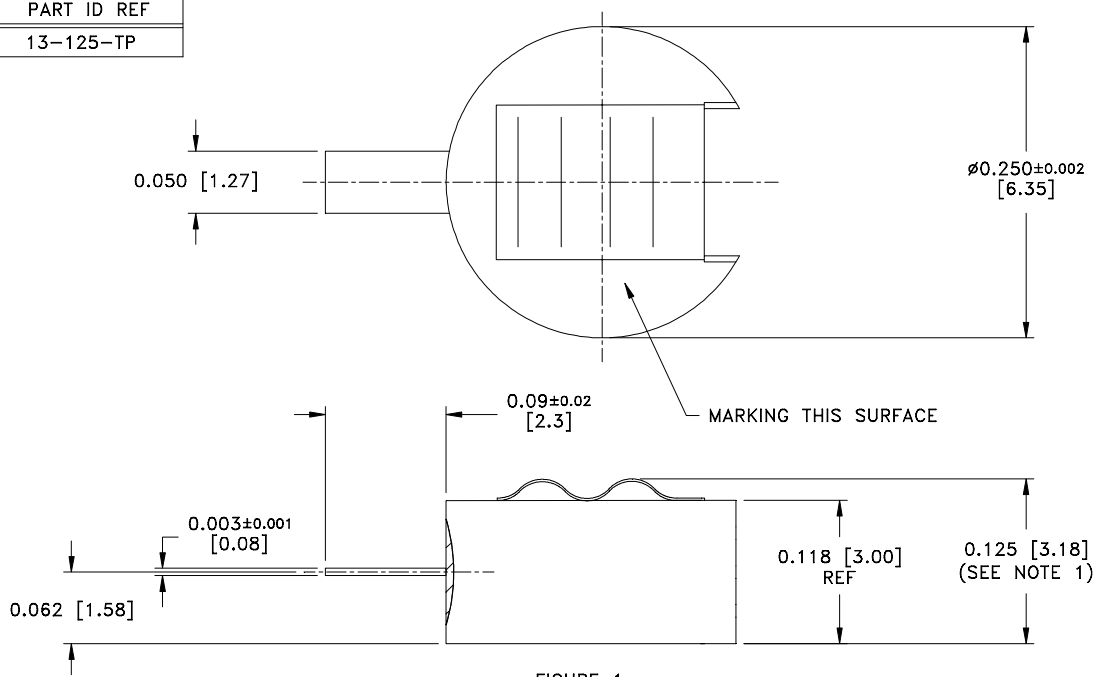


FIGURE 1

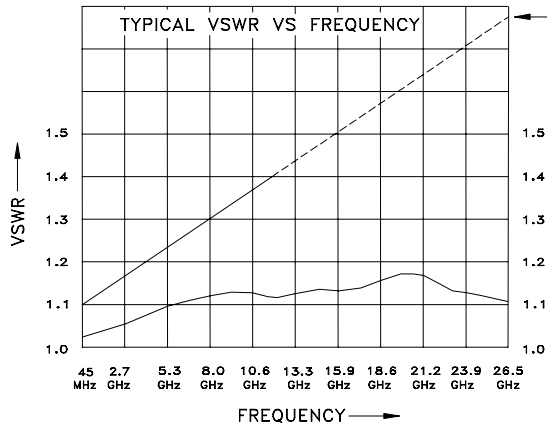
**MECHANICAL SPECIFICATIONS:**

- CASE:**  
 MATERIAL - BRASS, ASTM B16.  
 FINISH - GOLD, MIL-G-45204, TYPE II, CLASS 1.
- TAB:**  
 MATERIAL - BERYLLIUM COPPER, ASTM B197.  
 FINISH - GOLD, MIL-G-45204, TYPE II, CLASS 1.
- SPRING:**  
 MATERIAL - BERYLLIUM COPPER, ASTM B194.  
 FINISH - GOLD, MIL-G-45204, TYPE II CLASS 1.
- CERAMIC:**  
 MATERIAL - ALUMINA, MIL-I-10.

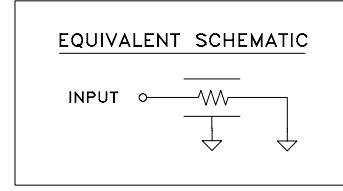
METRIC EQUIVALENTS GIVEN IN [mm]  
 FOR REFERENCE INFORMATION ONLY



- NOTE:**  
 1. MINIMUM EXPANDED SIZE - 0.132 [3.35].  
 MAXIMUM COMPRESSED SIZE - 0.123 [3.12].



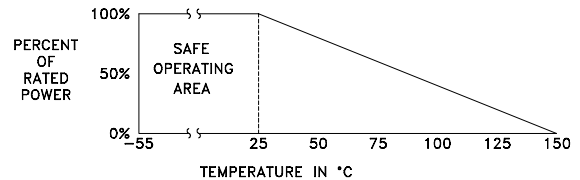
MIL. SPEC. LIMIT



NOTE: EFFECTS OF TEST FIXTURE REMOVED USING T.D.R. GATING TECHNIQUES.  
 (MEASURED ON H.P. 8510 NETWORK ANALYZER)

FIGURE 2

**POWER RATING AND DERATING**



EMC TECHNOLOGY INC  
 1971 OLD CUTHBERT RD  
 CHERRY HILL NJ 08034  
 PHONE NO. (856) 429-7800  
 FAX NO. (856) 429-1807

UNLESS OTHERWISE SPECIFIED DIMENSIONS ARE IN INCHES TOLERANCES

FRACT	---	---
ANG	---	---
XX	---	---
XXX	±0.005	---
XXXX	---	---

THESE DRAWINGS AND SPECIFICATIONS ARE THE PROPERTY OF EMC TECHNOLOGY INC AND SHALL NOT BE DUPLICATED OR USED AS BASIS FOR THE MANUFACTURE OR SALE OF PARTS OR DEVICES WITHOUT PERMISSION.

CAGE CODE	SCALE	DRAWN BY	CHECKED BY	APPROVED BY
24602	1:1	CME 08/30/2001		DAR 9/4/01
REV	CHANGE NOTICE	DRAWING NO	SHEET	
E	EN 01-401	1004645000	2 OF 2	