

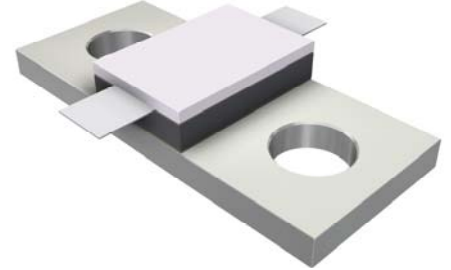
# RESISTOR FLANGE MOUNT 150 WATT

## FEATURES

Tab Launch  
High Power  
Integrated Heat Sink  
Low Capacitance  
Easy Installation  
Wide Resistance Range

## APPLICATIONS

Broadcast  
High Power Filters  
High Power Amplifiers  
Isolators  
Military  
Instrumentation



## GENERAL DESCRIPTION

EMC Technology offers the widest selection of flange mount resistors worldwide. High power flange components offer excellent performance and the convenience of bolt on installation.

## ORDERING INFORMATION

### Part Identifier:

31-1021-X-X  
└─ Resistance Value  
└─ Tolerance

## SPECIFICATIONS

### 1.0 ELECTRICAL

Resistance Range:	7 - 1000 OHMS
Resistance Tolerance:	±5% standard 1% and 2% available
Typical Capacitance:	0.6 pF
Input Power CW:	150 watts @ 100°C heat sink, derated linearly to zero power at 150°C
Peak Power:	1500 watts (based on 10us pulse width and 1% duty cycle)

### 2.0 ENVIRONMENTAL

Operating Temperature:	-55°C to +150°C
Non-operating Temperature:	-65°C to +150°C
Temperature Coefficient:	+/-200 PPM / °C max

### 3.0 MARKING

Unit Marking: Logo and Part Number, legibility and permanency per MIL-STD-130

### 4.0 QUALITY ASSURANCE

Visual and Mechanical Inspection:	Per 824W107
DC Resistance Check:	100% DC Resistance Check
Data Retention:	Standard

### 5.0 PACKAGING

Standard Packaging: Tray

# RESISTOR FLANGE MOUNT 150 WATT



DATA SHEET

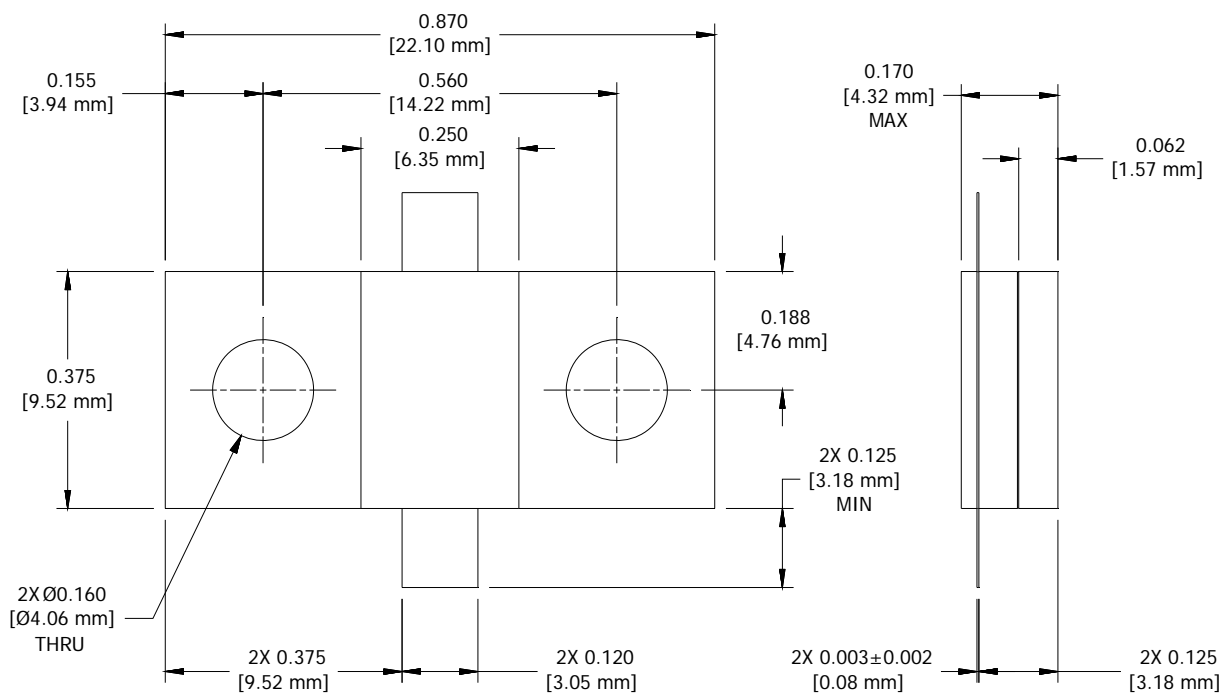
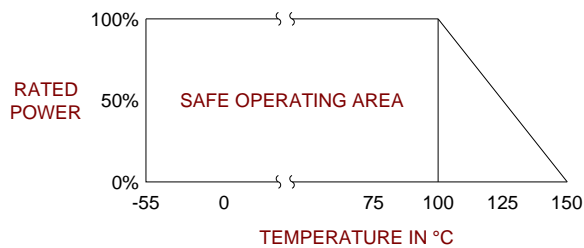
PART SERIES: 31-1021-X-X

SHEET 2 OF 2  
Dwg 31-1021

EN 14-0555  
Revision A

## 6.0 MECHANICAL

Substrate Material:	Beryllium Oxide
Resistive Film:	Thin Film
Cover Material:	Alumina
Tab Material:	Beryllium Copper
Tab Finish:	Tin/Lead
Flange Material:	Copper
Flange Finish:	Nickel
Metric Dimensions:	Provided for reference only



Unless Otherwise Specified: TOLERANCE: X.XX = ± 0.02 X.XXX = ± 0.010