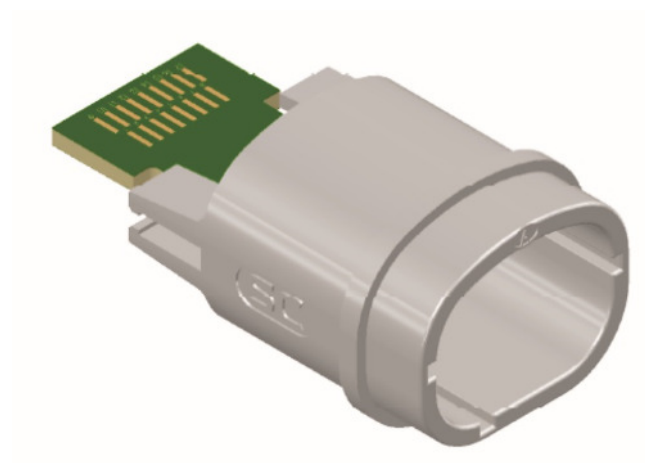


Assembly Instructions

Disposable Receptacle Connector

ECL34EDX/ECL34EDX-N

David Salomon, 02/21/2018

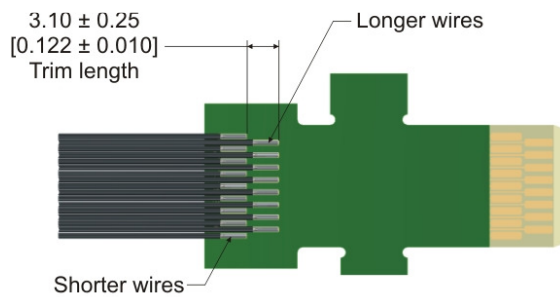
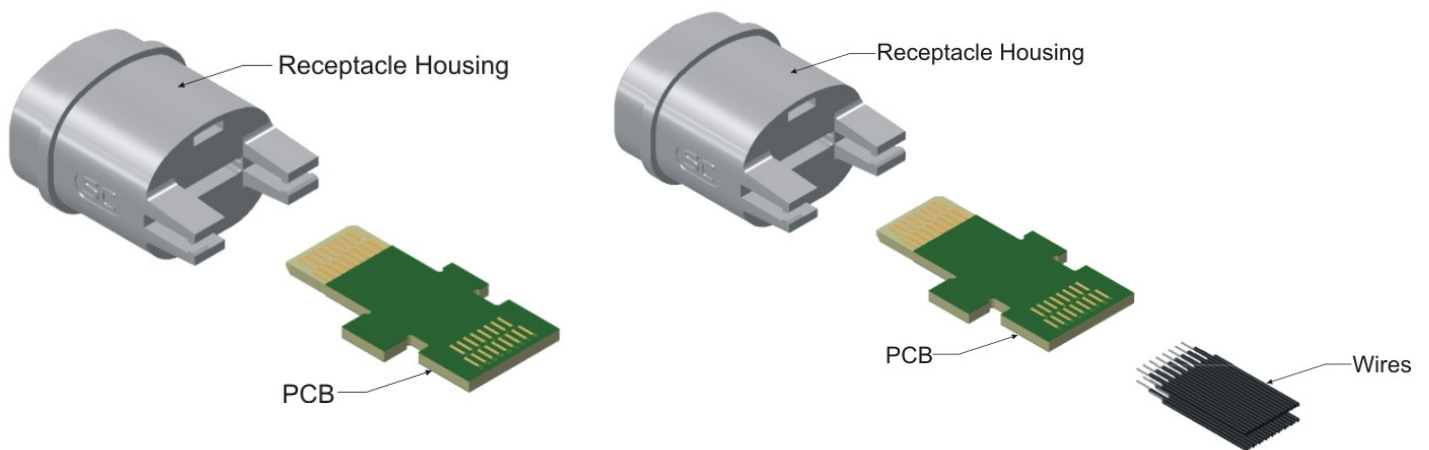


Assembly Instructions

Disposable Receptacle Connector – ECL34EDX/ECL34EDX-N

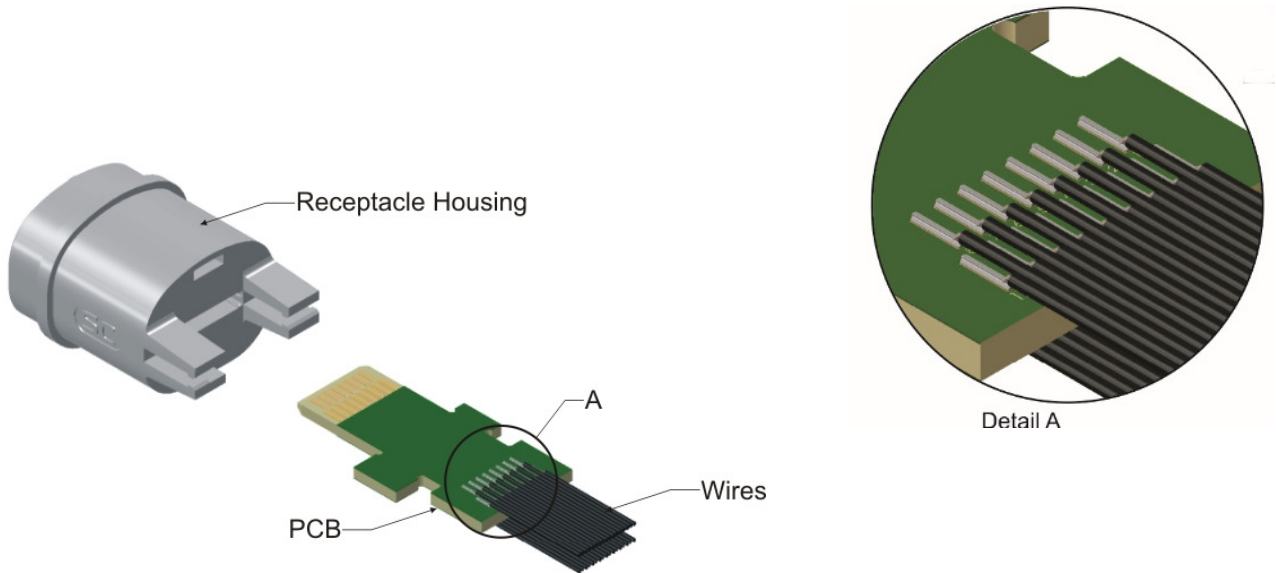
Disposable Receptacle Connector- Eclipta	
Connector Kit with PCB PN:	ECL34EDX
Connector Kit without PCB PN:	ECL34EDX-N
Standard PCB PN:	PCB0075
'X' represents Keying Designation ('A' through 'F')	

Step 1: Trim and strip wires to length.

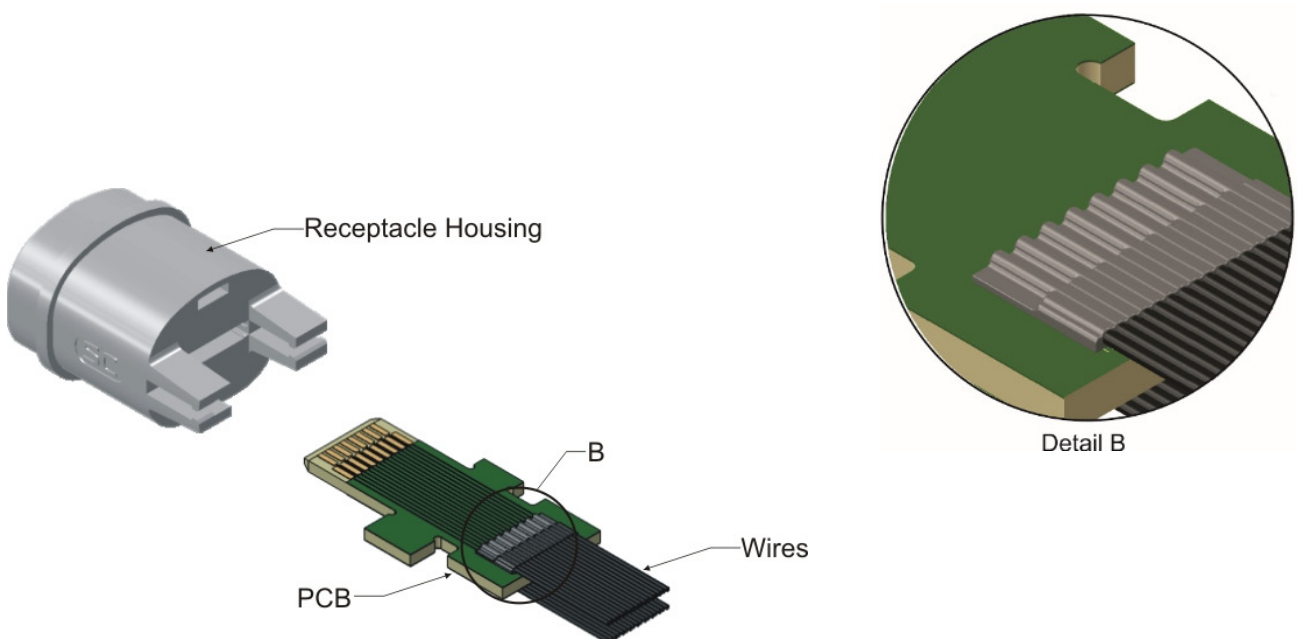


Wire Preparation		
	Strip Length [mm]	Trim Length [mm]
Shorter Wires	2.25 ± 0.25	3.10 ± 0.25
Longer Wires	2.25 ± 0.25	N/A

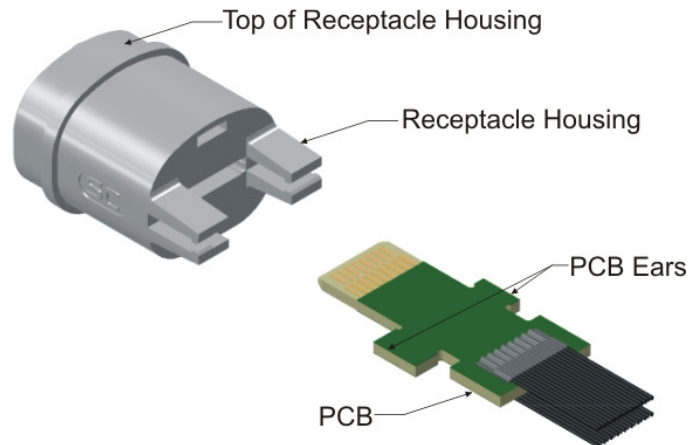
Step 2: Solder wires onto PCB per wiring diagram (customer supplied).
Soldering shall conform to most recent revision of J-STD-001, Class 2 Product.



Step 3: Apply Epoxy over the soldered wire-connections and fully cure before moving onto the next step.



Step 4: Position PCB as depicted below, assuring the ears of the PCB are oriented relative to the top of the receptacle housing as depicted in images below.



Step 5: Install PCB into receptacle housing until both ears of PCB snap into place. Latches may require slight wedging open action to successfully install.

