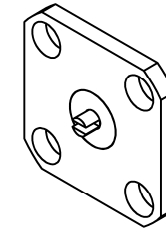
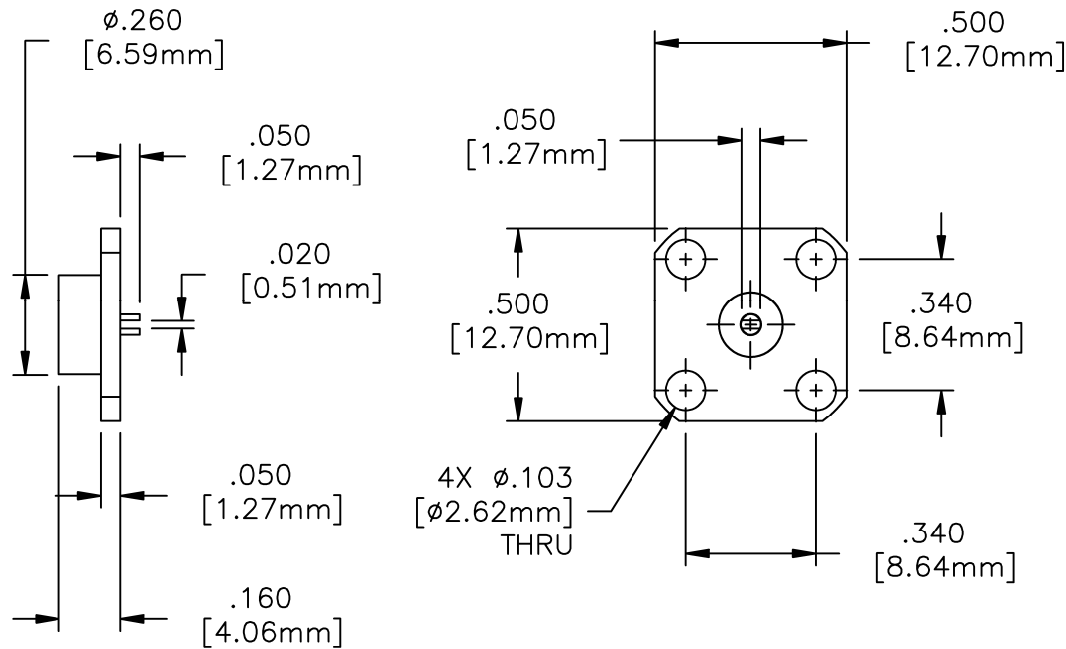


EDD

NOTES:  
UNLESS OTHERWISE SPECIFIED, TOLERANCES ARE  $\pm .010$ " [0.254mm].

DRAWING NO.:  
**42-0002**

REV.  
**K**



**MATERIALS:**


MTG. FLANGE: BRASS PER QQ-B-626  
SUBSTRATE: ALUMINA OXIDE  
TAB: BRASS PER QQ-B-626  
RESISTIVE FILM: NICHROME

**FINISH:**

MTG. FLANGE: NICKEL OVER COPPER  
TAB: GOLD OVER COPPER

**TECHNICAL:**

NOMINAL IMPEDANCE (OHMS): 50  
FREQUENCY RANGE (GHz): DC-18.0  
TEMPERATURE COEFFICIENT:  $\pm 200$  PPM/ $^{\circ}$ C MAX  
OPERATING TEMPERATURE ( $^{\circ}$ C):  $-55^{\circ}$  TO  $+150^{\circ}$   
VSWR (MAX): 1.20:1  
AVERAGE POWER (WATTS): 1  
DC RESISTANCE: 50.0 OHMS  $\pm 5\%$

K	09-F0709	CRH 07/16/09		ECN#	N/A	APVD	-	DATE	-	REFERENCE		 8851 OLD KANSAS AVE. STUART, FL. 34997 772-286-9300		
J	09-F0020	OJC 01/16/09		UNLESS OTHERWISE SPECIFIED						CATALOG				
H	08-F0754	OJC 08/18/08		1. DO NOT SCALE DRAWING 2. DIMENSIONS ARE IN INCHES 3. DIMENSIONS ARE AFTER PLATING 4. CORNERS, EDGES AND FILLETS: R 5. SURFACE ROUGHNESS: 6. REMOVE ALL BURRS										
F	ECN#01425	BLP 06/23/02		TOLERANCES								TITLE <b>TERMINATION, FLANGE MOUNT, 1 WATT</b>		
E	ECN# N/A	-	-	.X $\pm$										
D	ECN# N/A	-	-	.XX $\pm$	ANGLES X $\pm$									
C	ECN# N/A	-	-	.XXX $\pm$										
B	ECN# N/A	-	-	THE INFORMATION CONTAINED HEREIN IS: (A) CONSIDERED PROPRIETARY TO FLORIDA RF LABS INC.; (B) PROTECTED BY COPYRIGHT OWNED BY FLORIDA RF LABS INC.; (C) CONSIDERED A "WORK FOR HIRE" UNDER COPYRIGHT LAW; (D) PROTECTED BY TRADE SECRET LAWS WHICH MAKE ILLEGAL THE MISAPPROPRIATION OF THIS INFORMATION; AND (E) IS TO BE USED SOLELY FOR THE PURPOSE WHICH IT IS SUPPLIED. THIS INFORMATION SHALL NOT BE DISCLOSED IN WHOLE OR IN PART, TO ANY PARTY, FOR ANY REASON WITHOUT THE EXPRESS WRITTEN CONSENT OF A QUALIFIED EXECUTIVE OF FLORIDA RF LABS INC.				SCALE	CAGE CODE ID NO.	SIZE	DRAWING NO.:	REV.		
REV.	DESCRIPTION	DRAWN	APVD.							2/1	2Y194	A	42-0002	K
										MFG: -	CHKD.: -		DRAWN: BLP 06/23/02	SHEET OF