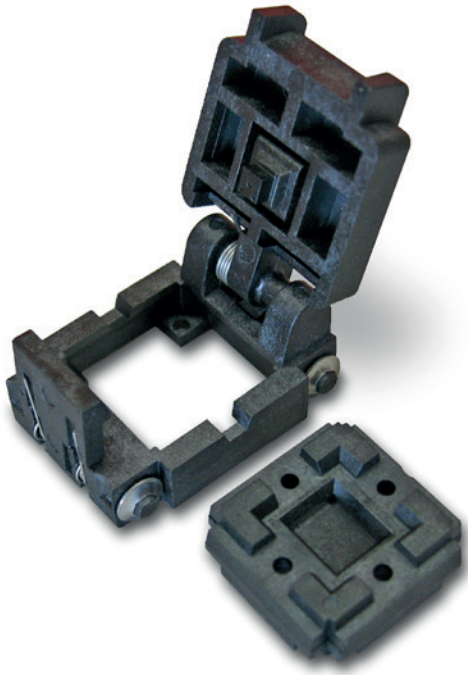


# QH-Series H-Pin Socket

Accelerated life testing solution



The QH-Series socket is available for all available QFN products on the market. Designed to meet the rigours of accelerated life testing applications with socket 40 part numbers available. The QH-Series is a fully moulded socket body and lid to meet the wide variety of burn-in test applications.

This socket also uses the H-Pin contact technology providing wide RF performance capabilities and exceptional DC characteristics. The QH-Series socket checks all the boxes: high frequency, high current, high temperature, low inductance, and low loss. These features result in lowering the cost of test.

Burn-in sockets using H-Pin technology for high-reliability testing of next-generation IC packages

## Benefits

- Industry proven design, in-house tooling, moulding and machining, with 100% automated assembly.
- Extensive catalogue of components and configurable options
- H-Pin offers unmatched DC performance.

## Feature Options

- Small socket footprint
- HAST venting features
- Reverse seating plane
- Max component clearance under the DUT
- 2 or 3 plate systems
- High temperature materials for above 200 °C applications

## QH-Series socket specifications

### Mechanical Properties:

- Pitch:  $\geq 0.35$  mm
- Package Size:  
QFN: 2 mm to 12 mm
- Pin count: 200
- Temperature:  $-55^{\circ}\text{C}$  to  $260^{\circ}\text{C}$

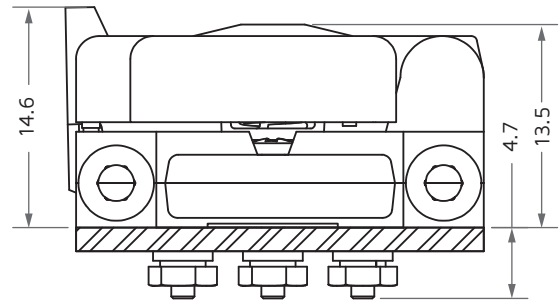
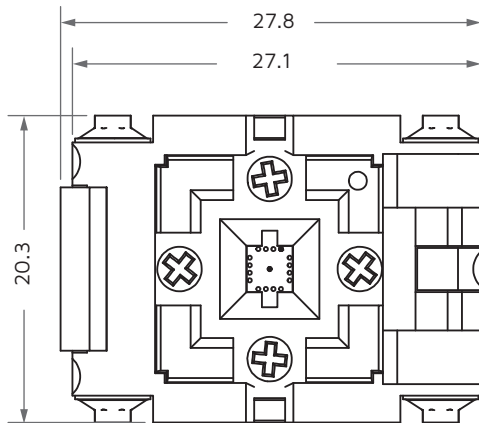
### Electrical Properties

- Contact Resistance:  $35\text{ m}\Omega$
- Current Carrying Capacity: up to 2.9 A

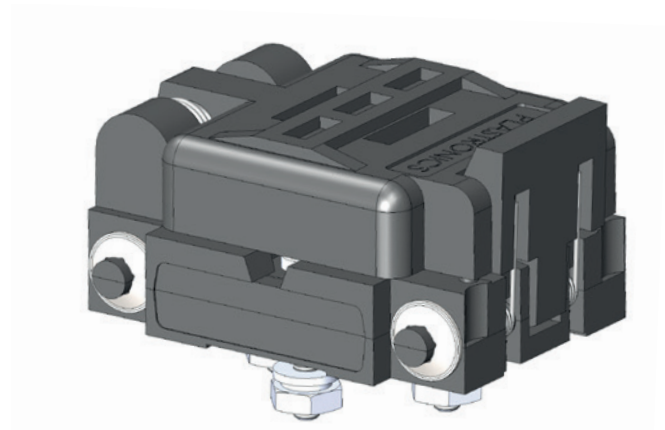
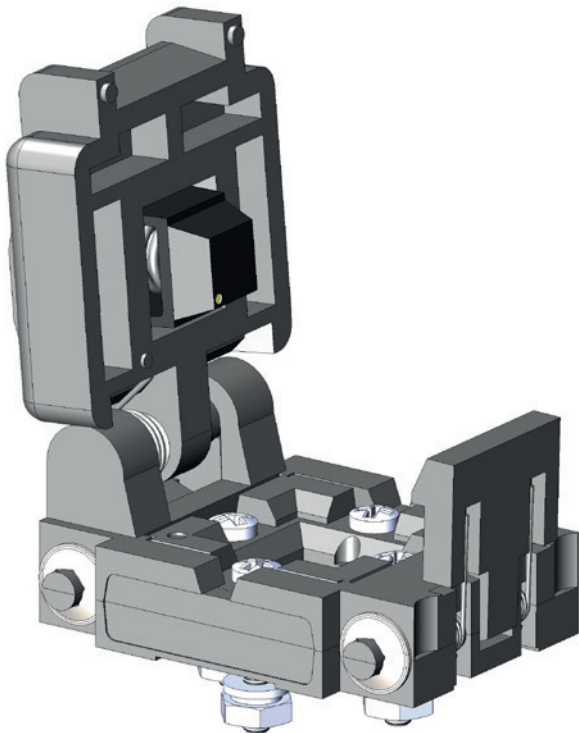
### Materials

- Contact: BeCu/Au plated
- Spring: SS/Au plated
- Socket: Engineering plastics

## QH-Series socket dimensions



Dimensions are in mm.



more > [smithsinterconnect.com](https://smithsinterconnect.com) | [in](#) [t](#) [v](#)