



## RESISTOR CHIP OUTRIGGER 1.0 W

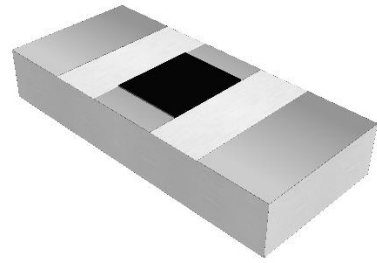
DATASHEET PART SERIES: CRH0409XXXXF

Sheet 1 of 2  
Doc# CRH0409XXXXF-1015325ECO-085210  
Revision A

## ORDERING INFORMATION

Part Identifier: CRH0409XXX XF

X = Tolerance (%).

XXX = Resistance Value ( $\Omega$ ).

## SPECIFICATIONS

## 1.0 ELECTRICAL

Frequency Range:	DC – 27 GHz.
Resistance Range:	10 - 500 $\Omega$ .
Resistance Tolerance:	$\pm 5\%$ .
Temperature Coefficient of Resistance:	$\pm 200$ PPM/ $^{\circ}\text{C}$ Max.
Input Power CW:	1.0 Watt.
Peak Power:	10W, 10 $\mu\text{s}$ pulse width, 1% duty cycle.

## 2.0 ENVIRONMENTAL

Operating Temperature:	-55 $^{\circ}\text{C}$ to +150 $^{\circ}\text{C}$ .
Non-operating Temperature:	-65 $^{\circ}\text{C}$ to +150 $^{\circ}\text{C}$ .

## 3.0 MARKING

Unit Marking:	Dot Marking, OHMS Value.
---------------	--------------------------

## 4.0 QUALITY ASSURANCE

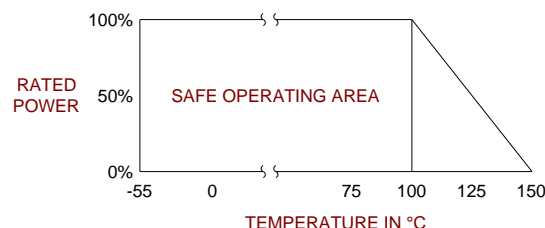
Visual and Mechanical Inspection:	Per 824W107.
DC Resistance Check:	100% DC Resistance Check.
Data Retention:	Standard.

## 5.0 PACKAGING

Standard Packaging:	Tape and Reel.
---------------------	----------------

## 6.0 MECHANICAL

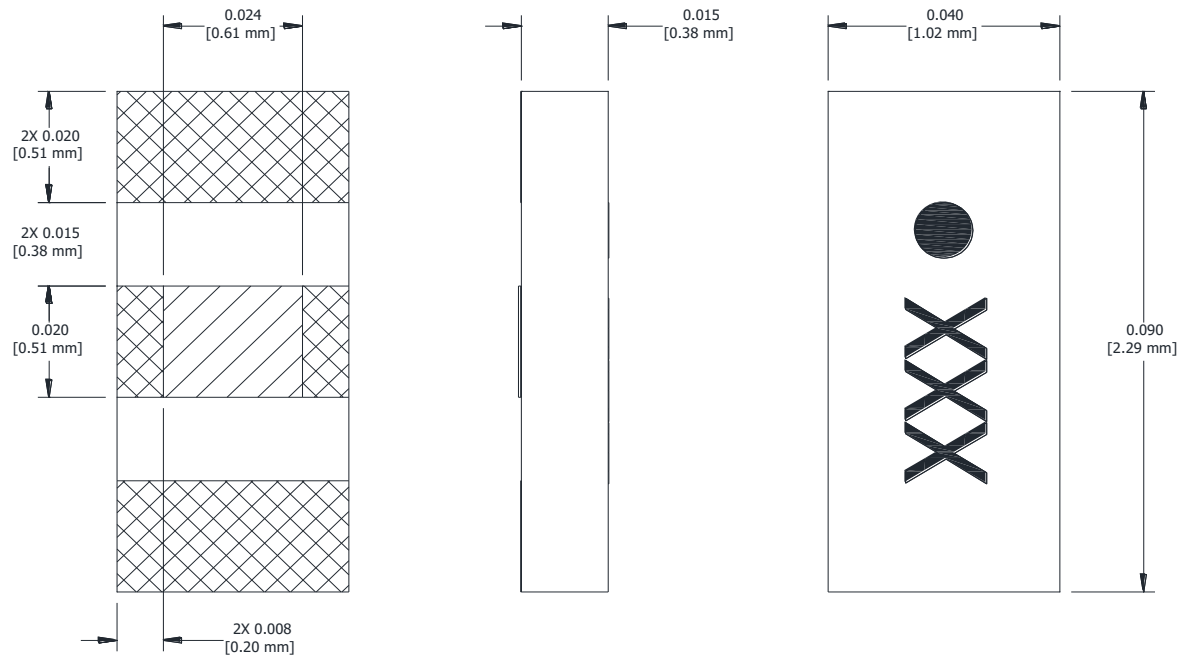
Substrate Material:	Alumina, 96%.
Resistive Film:	Thick Film.
Terminal Material:	Thick Film, Silver Plated.
Metric Dimensions:	Provided for reference only.





## RESISTOR CHIP OUTRIGGER 1.0 W

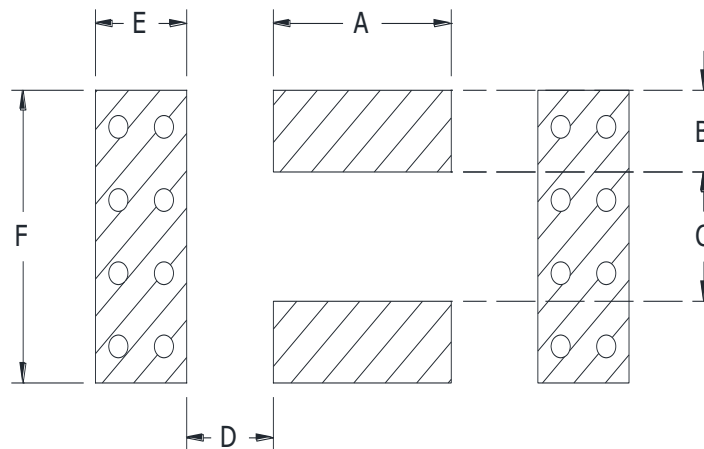
DATASHEETPART SERIES: CRH0409XXXXF

Sheet 2 of 2  
Doc# CRH0409XXXXF-1015325ECO-085210  
Revision A

Note: Specifications are subject to change.

Unless Otherwise Specified: TOLERANCE: X.XX =  $\pm 0.01$  X.XXX =  $\pm 0.005$ .

## 7.0 SUGGESTED MOUNTING FOOTPRINT



DIMENSION											
INCHES						METRIC (mm)					
A	B	C	D	E	F	A	B	C	D	E	F
0.025	0.010	0.024	0.015	0.025	0.045	0.635	0.254	0.610	0.381	0.635	01.143