



ATTENUATOR TEMPERATURE VARIABLE

DATASHEET PART SERIES: MTVA0X00N0XW3F

Sheet 1 of 2

ECO-084244

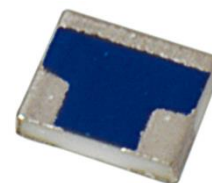
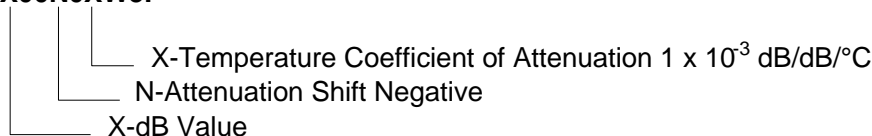
Doc# MTVA0X00N0XW3F-1010735

Revision E

ORDERING INFORMATION

Part Identifier:

MTVA0X00N0XW3F



SPECIFICATIONS

1.0 ELECTRICAL

Nominal Impedance:	50 Ω
Frequency Range:	DC-12.4 GHz
Attenuation Values Available:	0-9 dB in 1 dB increments
Attenuation Accuracy:	@ 25°C: ± 0.5 dB @ 1 GHz
VSWR:	1.30:1 Max @ 1 GHz
Input Power	200 milliwatts cw. Full Rated Power to 125°C, Derated Linearly to 0 Watts @ 150°C
Temperature Coefficient of Attenuation:	-0.003, -0.004, -0.005, -0.006, -0.007, -0.008, -0.009 dB/dB/°C
Temperature Coefficient Tolerance:	± 0.001 dB/dB/°C

2.0 ENVIRONMENTAL

Operating Temperature:	-55°C to +150°C
------------------------	-----------------

3.0 MARKING

Unit Marking:	dB Value (XX), Direction of Shift (N) And TCA Shift (X).
---------------	--

4.0 QUALITY ASSURANCE

Sample Inspect Per ANSI/ASQC Z1.4 General Inspection, Level II, AQL=1.0.

Visual and Mechanical Examination for Conformance to Outline Drawing Requirements

Sample Inspection (Destructive Testing).

Select three (3) units from lot and measure DCA every 20°C over the temperature range of

-55°C to +125°C; Calculate using linear regression, the slope of the curve.

Calculate TCA using the following formula:

$$TCA = \frac{\text{Slope}}{\text{Attenuation @ 25°C}}$$

Inspection in accordance with 824W107

Test Data Requirements:

No Data Required for Customer

Data Retention – 24 Months

5.0 PACKAGING

Standard:	Tape & Reel
-----------	-------------



ATTENUATOR TEMPERATURE VARIABLE

DATASHEET PART SERIES: MTVA0X00N0XW3F

Sheet 2 of 2

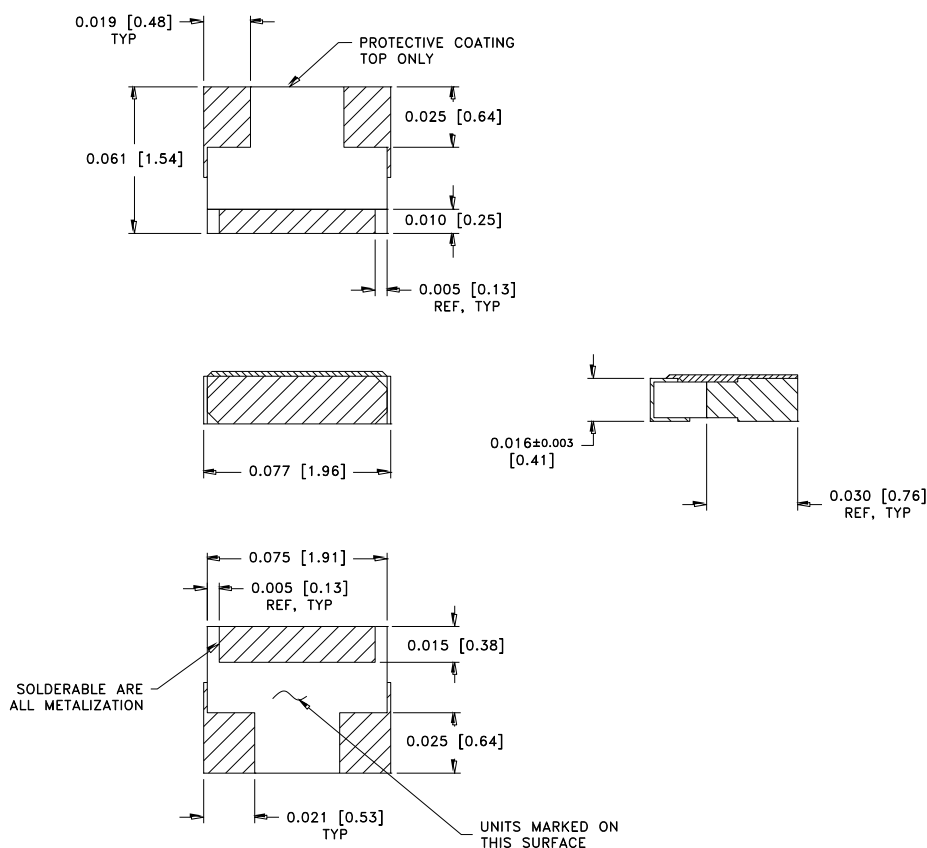
ECO-084244

Doc# MTVA0X00N0XW3F-1010735

Revision E

6.0 MECHANICAL

Substrate Material: Alumina, 96% MIL-I-10
Terminal Material: Thick Film, Nickel Barrier, Lead Free Plating
Workmanship: Per MIL-PRF-55342
Resistive Element: Thick Film
Metric Dimensions: Provided for reference only



Unless Otherwise Specified: TOLERANCE: X.XXX = ± 0.005

7.0 FOOTPRINT

Part Number	Inches						mm					
	A	B	C	D	S	W	A	B	C	D	S	W
MTVA0X00N0XW3F	0.022	0.028	0.041	0.013	0.026	0.075	0.56	0.71	1.04	0.33	0.66	1.91

