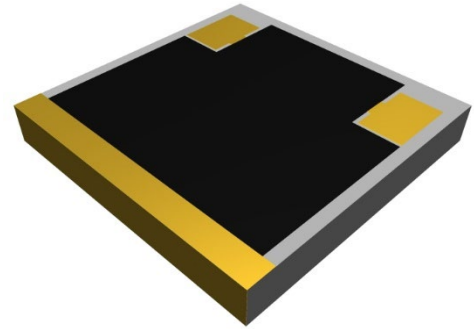


HIGH TEMPERATURE - DUAL TERMINATION, CVD DIAMOND 30 WATTS**DATASHEET PART SERIES: CT1010DX2**Sheet 1 of 2
Doc# CT1010DX2-1013185ECO-082846
Revision A**ORDERING INFORMATION****Part Identifier: CT1010DX2****SPECIFICATIONS****1.0 ELECTRICAL**

Nominal Impedance:	50 Ω \pm 5%
Frequency Range:	DC – 14 GHz
Input Power:	30 Watts Each Input
VSWR:	1.5:1 Max

**2.0 ENVIRONMENTAL**

Operating Temperature:	-55 °C To +225 °C
Temperature Coefficient:	\pm 200 PPM/°C Max

3.0 MARKING

Unit Marking:	None
---------------	------

4.0 QUALITY ASSURANCESample Inspect Per MIL-STD-105, Level II, 1.0% AQL.

Visual and Mechanical Inspection for Conformance to Outline Drawing

Measure DC Resistance

Data Retention - Standard

5.0 PACKAGING

Standard:	Waffle Packaging
Optional:	Tape and Reel

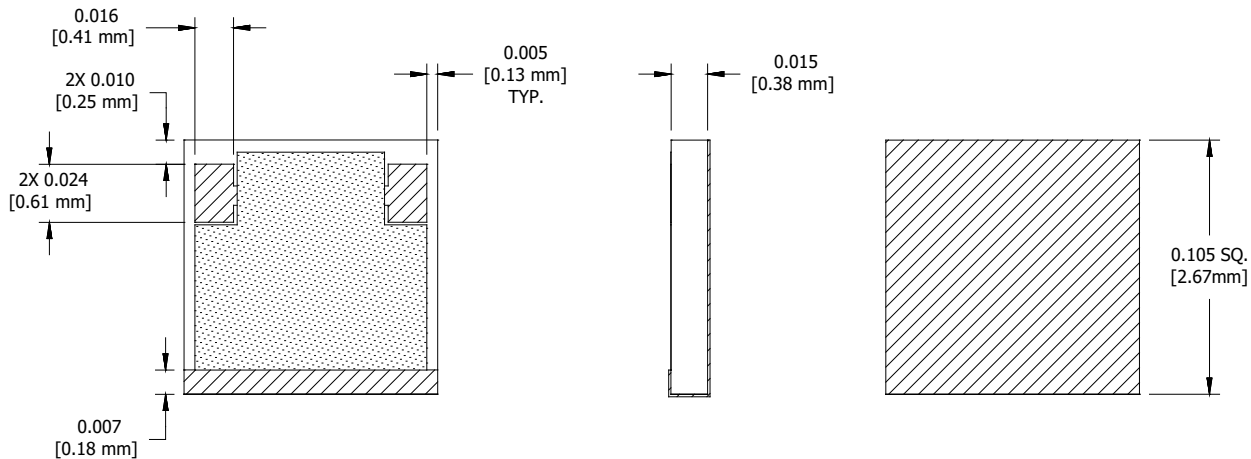
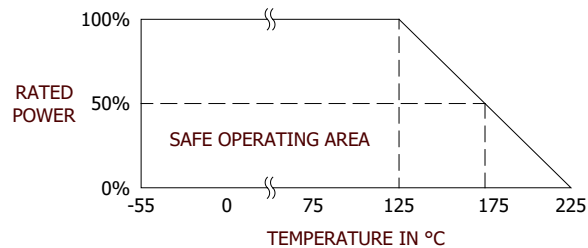
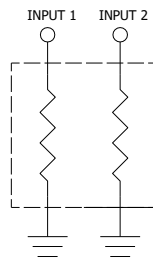
HIGH TEMPERATURE - DUAL TERMINATION, CVD DIAMOND 30 WATTS

DATASHEET PART SERIES: CT1010DX2

Sheet 2 of 2
Doc# CT1010DX2-1013185ECO-082846
Revision A

6.0 MECHANICAL

Substrate Material:	CVD Diamond
Resistive Element:	Passivated TaN
Metallization, Contacts:	Palladium (1.0 Micron) Gold (1.0 Micron)
Metallization, Bottom Side:	Platinum (1200 Angstrom) Gold (1500 Angstrom)
Attachment:	Solder or Wire Bond
Recommended Solder:	80/20 Gold-Tin (280°C)
Metric Dimensions:	Provided for reference only

Unless Otherwise Specified: TOLERANCE: X.XX = ± 0.01 X.XXX = ± 0.005