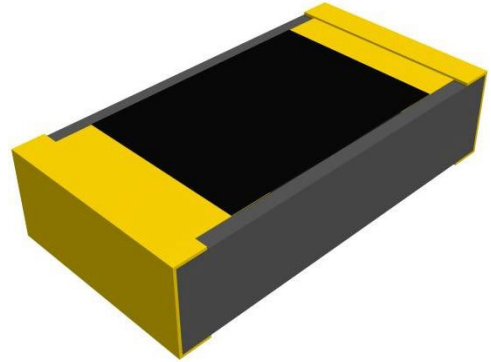


**RESISTOR CVD DIAMOND CHIP 2.0 WATTS, WRAPPED****DATASHEET PART SERIES: CR0603DX5W2**Sheet 1 of 2  
Doc# CR0603DX5W2-1013145ECO-082845  
Revision C**ORDERING INFORMATION****Part Identifier:**

CR0603DX5W2

Resistance

**SPECIFICATIONS****1.0 ELECTRICAL**

Resistance:	50, 100, 150, 240 & 280 $\Omega$ , $\pm 5\%$
Frequency Range:	DC – 18 GHz
Capacitance:	0.20 pF Typical
Input Power CW:	2.0 Watts
Peak Power:	25 Watts (1 $\mu$ s pulse width/1% duty cycle)

**2.0 ENVIRONMENTAL**

Operating Temperature:	-55 °C To +125 °C
Storage Temperature:	-55 °C To +150 °C
Temperature Coefficient:	$\pm 200$ PPM/°C Max

**3.0 MARKING**

Unit Marking:	None
---------------	------

**4.0 QUALITY ASSURANCE**

Sample Inspect Per MIL-STD-105, Level II, 1.0% AQL  
 Visual and Mechanical Inspection for Conformance to Outline Drawing  
 Measure DC Resistance  
 Data Retention - Standard

**5.0 PACKAGING**

Standard:	Waffle Packaging
Optional:	Tape and Reel

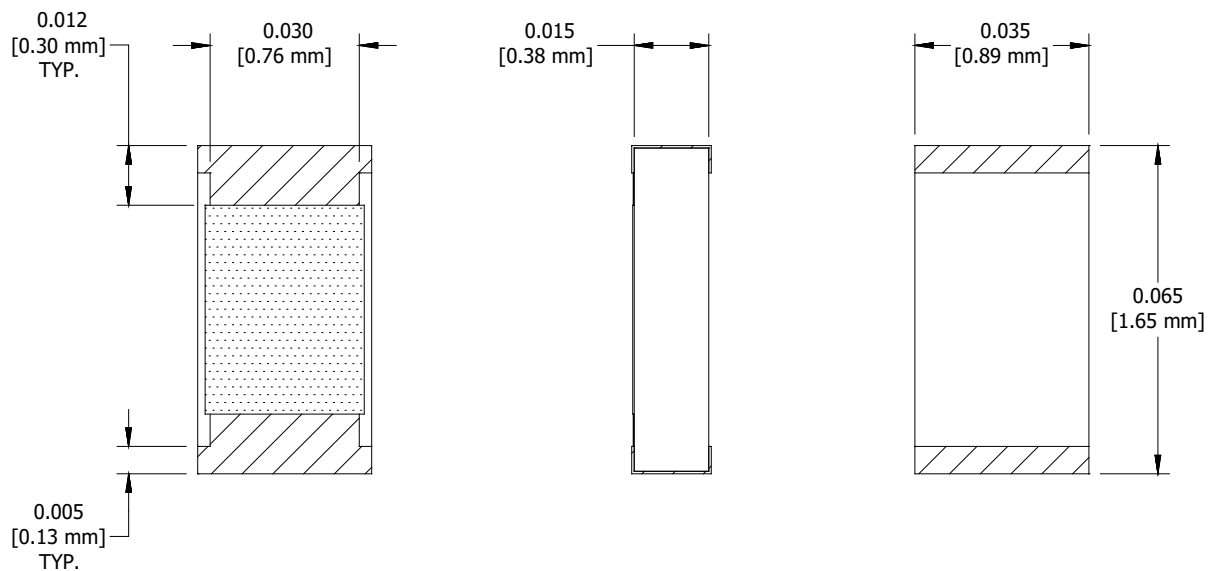
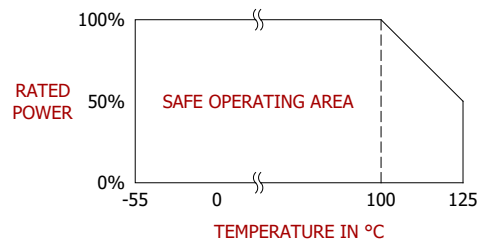
## RESISTOR CVD DIAMOND CHIP 2.0 WATTS, WRAPPED

DATASHEET PART SERIES: CR0603DX5W2

Sheet 2 of 2  
Doc# CR0603DX5W2-1013145ECO-082845  
Revision C

## 6.0 MECHANICAL

Substrate Material:	CVD Diamond
Resistive Element:	Thin Film
Terminal Material:	Gold over Nickel
Ground Plane Material:	Gold over Platinum
Metric Dimensions:	Provided for reference only

Unless Otherwise Specified: TOLERANCE: X.XX =  $\pm 0.01$  X.XXX =  $\pm 0.005$