



ATTENUATOR CHIP 0.5 WATT

DATA SHEET

PART SERIES: AT9XXF

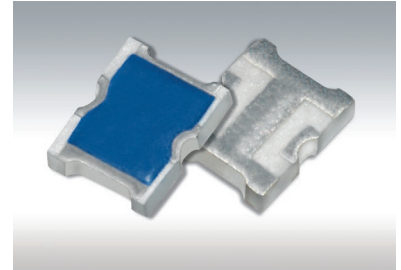
SHEET 1 OF 2
Dwg 1016325ECO-074828
Revision B

FEATURES

Small Footprint
High Power
Surface Mount
Low VSWR
Easy Installation
Wide Attenuation Offering

APPLICATIONS

Mobile Networks
Broadcast
High Power Amplifiers
Isolators/Circulators
Military
Instrumentation



GENERAL DESCRIPTION

EMC Technology offers the widest selection of chip attenuators worldwide. Chip components are offered in Alumina, Aluminum Nitride, Beryllium Oxide, and CVD diamond for maximum performance.

ORDERING INFORMATION

Part Identifier: AT9XXF

(XX) – dB Value

SPECIFICATIONS

1.0 ELECTRICAL

Nominal Impedance: 50 Ω
Frequency Range: DC – 20 GHz
Attenuation Values Available: 0 – 6dB and 10dB in 1 dB increments
Attenuation Accuracy:

ATTENUATION ACCURACY @25°C		
dB	DC – 20 GHz	
0 – 6	± 0.75	
10	± 0.75	

Input Power CW: 500 Milliwatts full rated power to 125°C, derated linearly to 0 watts at 150°C.
VSWR @ 25°C: DC – 20 GHz - 1.40:1 Typical
DC – 20 GHz - 1.70:1 Max

2.0 ENVIRONMENTAL

Operating Temperature: -55°C to +150°C

3.0 MARKING

Unit Marking: None

4.0 QUALITY ASSURANCE

Sample Inspect Per MIL-STD-105, Level II, 1.0% AQL

Visual and Mechanical Inspection for Conformance to Outline Drawing
Measure DCR and calculate DCA
Data Retention - Standard

5.0 PACKAGING

Standard Packaging: Tape and Reel

ATTENUATOR CHIP 0.5 WATT



DATA SHEET

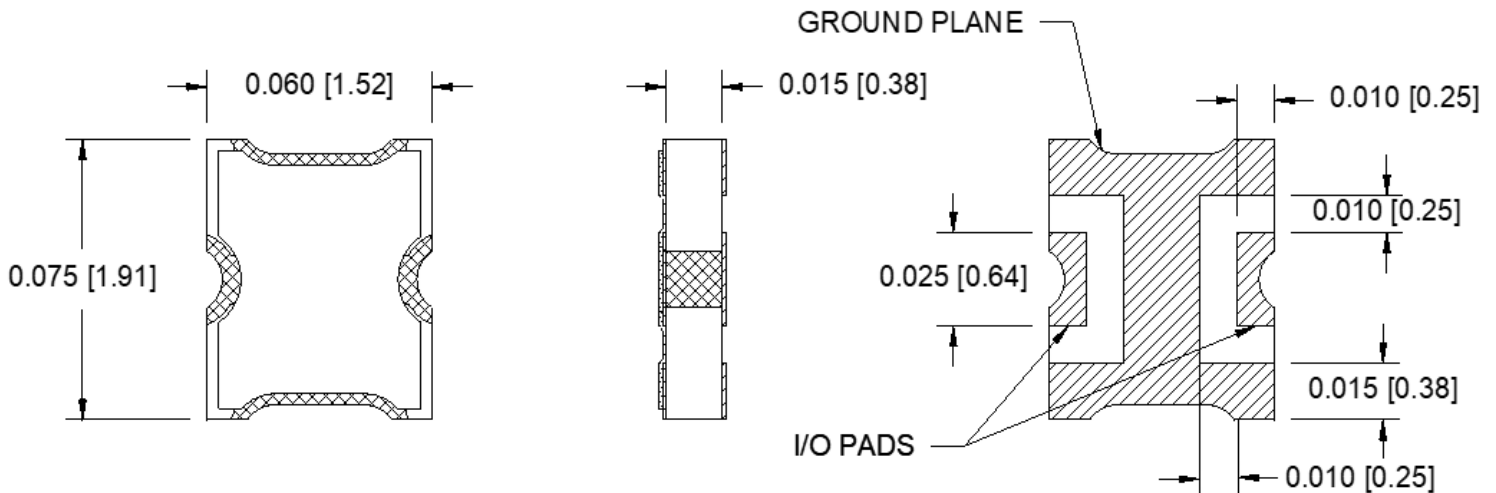
PART SERIES: AT9XXF

SHEET 2 OF 2
Dwg 1016325

ECO-074828
Revision B

6.0 MECHANICAL

Substrate Material: Alumina
Resistive Film: Thick Film
Terminal Material: Thick Film, Nickel Barrier, Silver Plated
Metric Dimensions: Provided for reference only
Workmanship: PER MIL-PRF-55342



Unless Otherwise Specified: TOLERANCE: X.XXX = ± 0.005

7.0 SUGGESTED MOUNTING FOOTPRINT

Part Number	Inches						mm					
	A	B	C	D	S	W	A	B	C	D	S	W
AT9XXF	0.019	0.011	0.012	0.041	0.012	0.070	0.48	0.28	0.30	1.04	0.30	1.78

