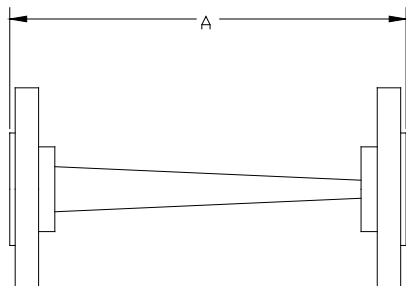
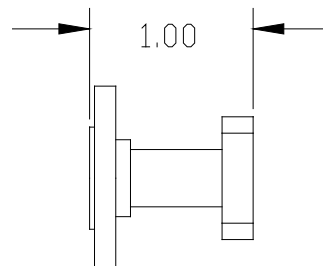


OUTLINE DRAWINGS

Series TWT



Series WFA (dimensions in inches)



MECHANICAL SPECIFICATIONS

Model Number	TWT-42	TWT-28	TWT-22	TWT-19	TWT-15	TWT-12	TWT-10	TWT-08	TWT-06	TWT-05
WR-42 (18-26.5 GHz)	---	2.2/56	2.2/56	2.5/64	2.7/69	3.3/84	3.2/81	3.4/86	3.5/89	3.6/91
WR-28 (26.5-40 GHz)	---	---	2.0/51	2.0/51	2.0/51	2.4/61	1.8/46	2.2/56	2.3/58	2.4/61
WR-22 (33-50 GHz)	---	---	---	1.8/46	1.8/46	1.8/46	1.8/46	1.8/46	1.8/46	1.9/48
WR-19 (40-60 GHz)	---	---	---	---	1.6/41	1.5/38	1.5/38	1.5/38	1.5/38	1.6/41
WR-15 (50-75 GHz)	---	---	---	---	---	1.4/36	1.4/36	1.4/36	1.4/36	1.4/36
WR-12 (60-90 GHz)	---	---	---	---	---	---	1.3/33	1.3/33	1.3/33	1.3/33
WR-10 (75-110 GHz)	---	---	---	---	---	---	---	1.2/31	1.2/31	1.2/31
WR-08 (90-140 GHz)	---	---	---	---	---	---	---	---	1.1/28	1.1/28
WR-06 (110-170 GHz)	---	---	---	---	---	---	---	---	---	1.0/25
Flange MIL.F-3922	/54-001	/54-003	/67B-006	/67B-008	/67B-008	/67B-009	/67B-010	/67B-M08	/67B-M06	/67B-M05

HOW TO ORDER

Specify Model Number SWS-XX-ABBØ (straight waveguide sections)
XX = Waveguide Band WR – number
A = Flange Type R – round S – square (WR-42 and WR-28 only) A – Precision Flange per Millitech IS000131, flat option (WR-08 through WR-05 only)
BB = Length in Inches (1 to 48) Example: 01 = 1 inch (standard)
Note: Straight waveguide available in copper or stainless steel upon request

EXAMPLE:

To Order: a series SWS WR-22 straight waveguide section 2 inches in length with round flanges

Specify: SWS-22-R0200

HOW TO ORDER

Specify Model Number TWT-XX-ABBCØ (tapered transitions)
XX = Large Size Waveguide Band WR – number
A = Large Waveguide Flange Type R – round (WR-28 through WR-05 only) S – square (WR-42 and WR-28 only) A – Precision Flange per Millitech IS000131, flat option (WR-08 through WR-05 only)
BB = Small Size Waveguide Band WR – number
C = Small Waveguide Flange Type R – round S – square (WR-28 only) A – Precision Flange per Millitech IS000131, flat option (WR-08 through WR-05 only)

EXAMPLE:

To Order: a series TWT tapered transition from WR-15 to WR-08 with a round flange in WR-15 and a Precision flange in WR-08

Specify: TWT-15-R08PØ

HOW TO ORDER

Specify Model Number WFA-XX-ABØØ (waveguide flange adapters)
XX = Waveguide Band WR – number
A = Input Flange Type R – round (WR-28 through WR-05 only) S – square (WR-42 and WR-28 only) A – Precision Flange per Millitech IS000131, flat option (WR-08 through WR-05 only)
B = Output Flange Type (WR-28 through WR-05 only) R – round S – square (WR-42 and WR-28 only) A – Precision Flange per Millitech IS000131, flat option (WR-08 through WR-05 only)

EXAMPLE:

To Order: a series WFA waveguide flange adapter for WR-28 with a square input flange and round output flange

Specify: WFA-28-SR000