

TERMINATION FLANGE MOUNT 150 WATT



DATA SHEET

PART SERIES: 32-1003

SHEET 1 OF 2
Dwg 32-1003

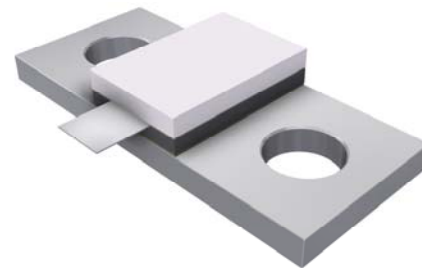
EN 13-3517
Revision-

FEATURES

Tab Launch
High Power
Integrated Heat Sink
Low VSWR
Easy Installation

APPLICATIONS

Mobile Networks
Broadcast
High Power Amplifiers
Isolators
Military
Instrumentation



GENERAL DESCRIPTION

EMC Technology offers the widest selection of flange mount terminations worldwide. High power flange components offer excellent performance and the convenience of bolt on installation.

ORDERING INFORMATION

Part Identifier: 32-1003

SPECIFICATIONS

1.0 ELECTRICAL

| | |
|--------------------|---|
| Nominal Impedance: | 50 ohms |
| Frequency Range: | DC - 1.0 GHz |
| VSWR: | DC - 0.5 GHz 1.20:1 Max 0.5 - 1.0 GHz 1.35:1 Max |
| Input Power CW: | 150 Watts @ 100°C heat sink, derated linearly to zero power and 150°C |
| Peak Power: | 1500 Watts (based on 10us pulse width and 1% duty cycle) |
| DC Resistance: | 50 Ω \pm 5% |

2.0 ENVIRONMENTAL

| | |
|----------------------------|---------------------|
| Operating Temperature: | -55°C to +150°C |
| Non-operating Temperature: | -65°C to +150°C |
| Temperature Coefficient: | +/-200 PPM / °C max |

3.0 MARKING

| | |
|---------------|---|
| Unit Marking: | Logo and Part Number, legibility and permanency per MIL-STD-130 |
|---------------|---|

4.0 QUALITY ASSURANCE

| | |
|-----------------------------------|--------------------------|
| Visual and Mechanical Inspection: | Per 824W107 |
| DC Resistance Check: | 100% DC Resistance Check |
| Data Retention: | Standard |

5.0 PACKAGING

| | |
|---------------------|----------------|
| Standard Packaging: | Tray Packaging |
|---------------------|----------------|

TERMINATION FLANGE MOUNT 150 WATT



DATA SHEET

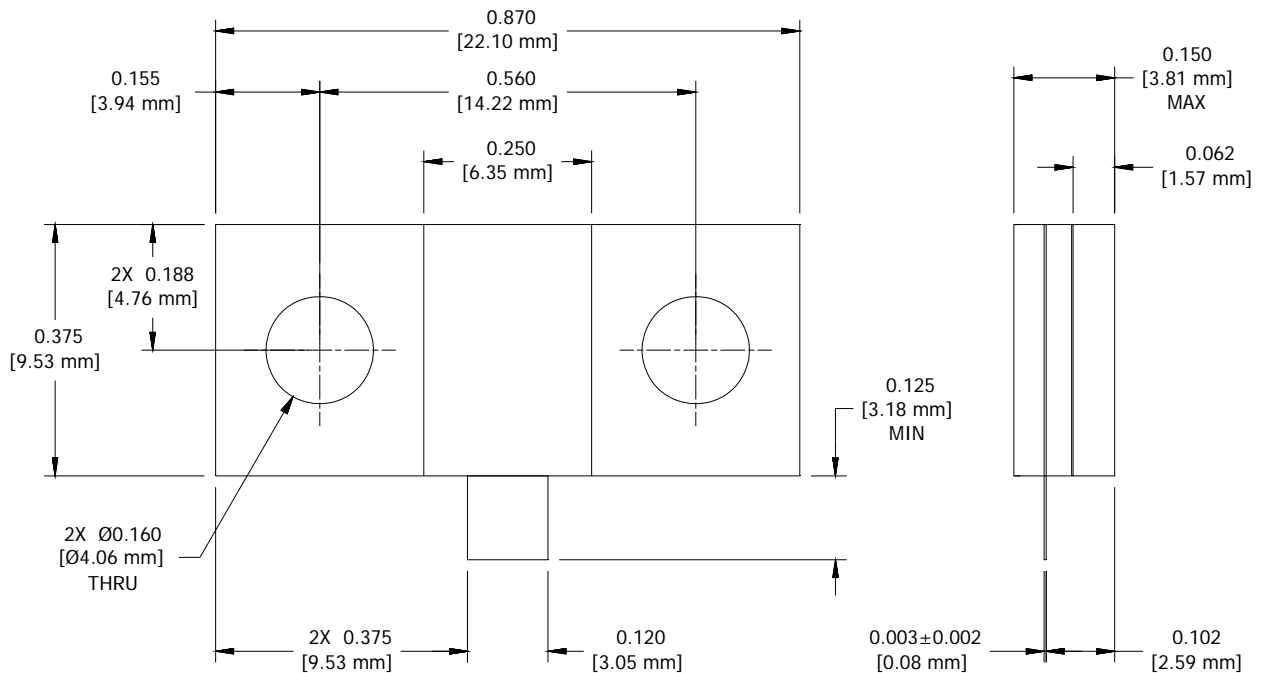
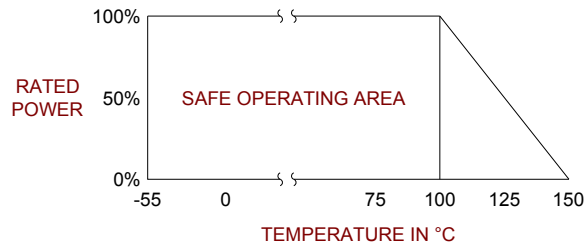
PART SERIES: 32-1003

SHEET 2 OF 2
Dwg 32-1003

EN 13-3517
Revision-

6.0 MECHANICAL

| | |
|---------------------|-----------------------------|
| Substrate Material: | Beryllium Oxide |
| Resistive Film: | Thin Film |
| Cover Material: | Alumina |
| Tab Material: | Beryllium Copper |
| Tab Finish: | Tin/Lead Plated |
| Flange Material: | Copper |
| Flange Finish: | Nickel Plated |
| Metric Dimensions: | Provided for reference only |



Unless Otherwise Specified: TOLERANCE: X.XX = ± 0.02 X.XXX = ± 0.010