

ARINC 628 Connectors

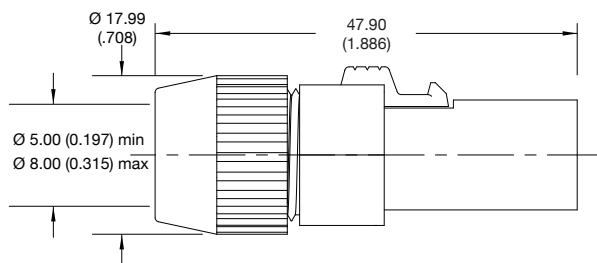
Signal and Power Plastic Circular Connectors



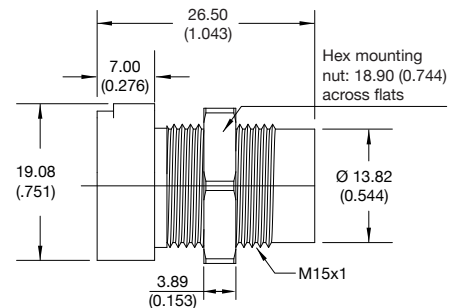
- Industry standard
- 2 power and 2 signal contacts
- Optional 5 signal positions
- Quick disconnect push button release
- Alignment provided by housing
- Crimp contacts

Connector dimensions

P = Plug (Cable)



EE = Receptacle (Panel Mount)



Note:

Recommending tightening torque for panel mount receptacle is 0.452 to 0.678 N-m
Dimensions are in mm (inches)

Technical Characteristics

Contacts	Power	Signal
Number	2	2
Diameter	1.5mm (.059")	0.5mm (.018")
Current rating (Amps)	8	2.5
Wire size (AWG)	16-20	22-26
Contact resistance	<2.0 milliohms	<8.0 milliohms
Extraction force per contact	1.8 to 5.4 oz.	0.3 to 1.6 oz.

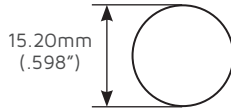
Material & Plating

Receptacle	Polycarbonate
Plug	Polycarbonate
Flamability	UL94VO
Male pins	G = 10 µin gold (min) over Ni - H = 50 µin gold (min) over Ni
Female sockets	AH = 50 µin gold (min) over Ni on mating surface
Pins	Brass (power pins) PhBz (signal pins)
Sockets	BeCu wires and Brass body

Others

Temperature rating	-40°C to +85°C
Insulation resistance	>10 MΩ @ 500 Vdc

Mounting dimensions



Mounting plate material	Max recommended thickness to use hole punch
Steel	1.60mm (.062")
Other	2.40mm (.094")

Replacement contacts

	Power	Signal
Pin	YPN015-038G YPN015-038H	YPN005-049G YPN005-049H
Socket	YSK015-053AH	YSK005-036AH

Accessories

	Power	Signal
Crimp tool	AF8	AFM8
Positioner (pin)	T1165	T870
Positioner (socket)	TP688	T870
Removal tool	T1124	-
Insertion tool	-	T1215

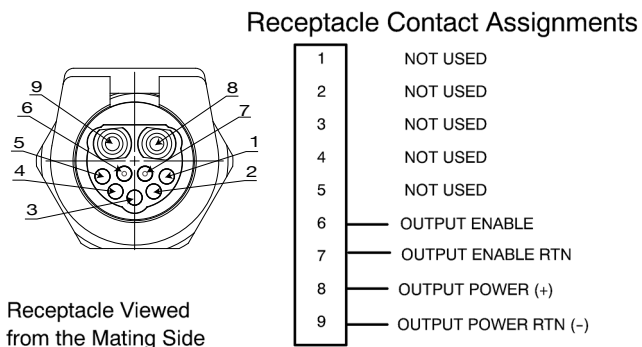
Ordering information

Male plug	Contact Plating
D02PBMRT-0024 D02PBMRT-0025	10 µin gold (min) over Ni 50 µin gold (min) over Ni
Female receptacle	
D02EEBFRTAH-0022	50 µin gold (min) over Ni on mating surface, & gold flash over Ni on socket bodies

Typical application wiring

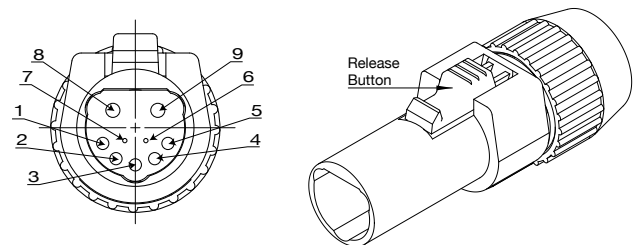
Connectors are shipped unassembled and not pre-wired

In-seat Power interfaces



Power contact in position 8 and 9 only.
Signal contacts in positions 6 and 7 only.

Power or adapter cable plug



Plug Contact Assignments

1	Not used
2	Not used
3	Not used
4	Not used
5	Not used
6	Output Enable
7	Output Enable RTN
8	Output Power (+)
9	Output Power RTN (-)

— To PED or DC Voltage Adapter