

ATTENUATOR TAB & COVER 150 WATT



DATA SHEET

PART SERIES: 83-3006TC-20.00

SHEET 1 OF 2
Dwg 83-3006TC-20.00

EN 13-3534
Revision -

FEATURES

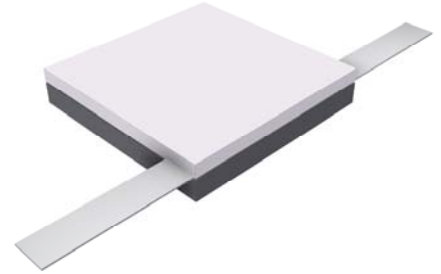
- Tab Launch
- High Power
- Excellent Heat Transfer
- Low VSWR
- Easy Installation
- Wide Attenuation Offering

APPLICATIONS

- Mobile Networks
- Broadcast
- High Power Amplifiers
- Isolators
- Military
- Instrumentation

GENERAL DESCRIPTION

EMC Technology offers the widest selection of flangeless attenuators worldwide. Tab and cover components offer the highest performance of any style of attenuator component.



ORDERING INFORMATION

Part Identifier:

83-3006TC-20.00

└─ Attenuation Value

SPECIFICATIONS

1.0 ELECTRICAL

| | |
|-------------------------------|--|
| Nominal Impedance: | 50 ohms |
| Frequency Range: | DC - 1.0 GHz |
| Attenuation Values Available: | 20.0 dB |
| Attenuation Accuracy: | ± 1.5 dB |
| Input Power CW: | 150 watts @ 100°C heat sink, derated linearly to zero power at 150°C |
| Peak Power: | 1500 watts (based on 10us pulse width and 1% duty cycle) |
| VSWR: | 1.50:1 Max |

2.0 ENVIRONMENTAL

| | |
|----------------------------|---------------------|
| Operating Temperature: | -55°C to +150°C |
| Non-operating Temperature: | -65°C to +150°C |
| Temperature Coefficient: | +/-200 PPM / °C max |

3.0 MARKING

Unit Marking: Logo and Part Number; legibility and permanency per MIL-STD-130

4.0 QUALITY ASSURANCE

Sample Inspect Per MIL-STD-105, Level II, 1.0% AQL.
Visual and Mechanical Examination for Conformance To Outline Drawing Requirements.
Measure Attenuation and VSWR
Data Retention – Standard

5.0 PACKAGING

Standard Packaging: Tray

ATTENUATOR TAB & COVER 150 WATT



DATA SHEET

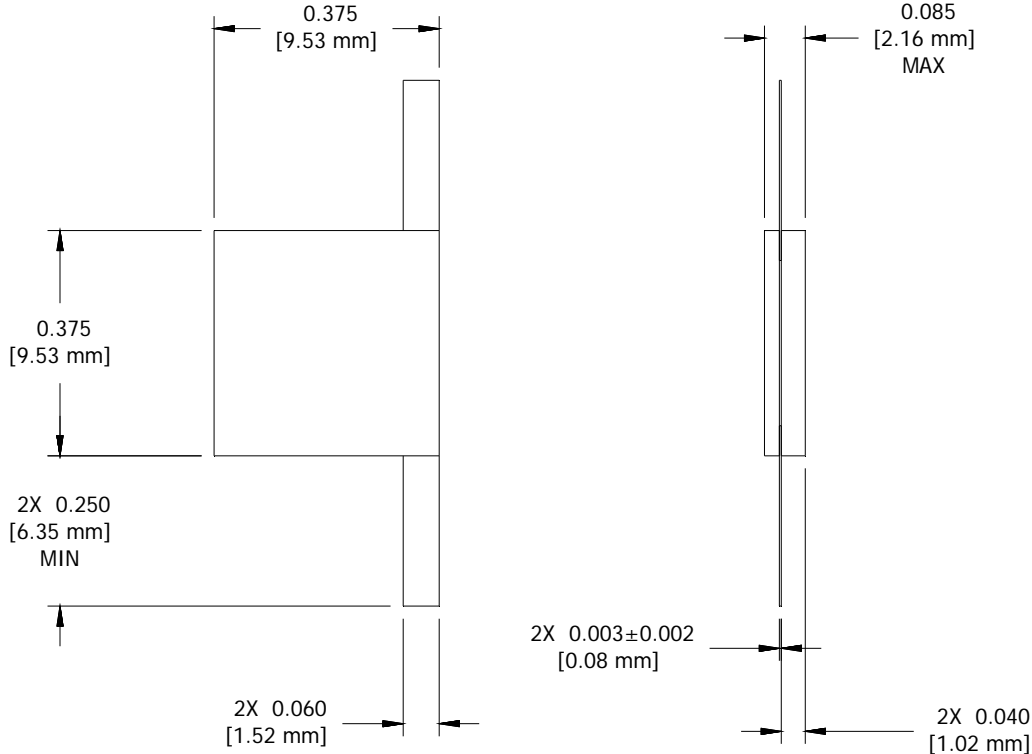
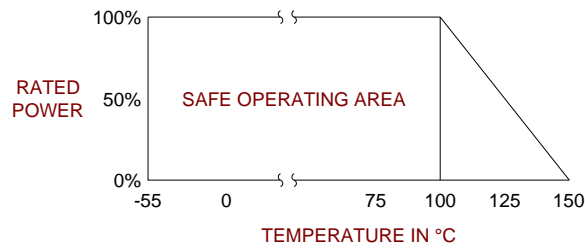
PART SERIES: 83-3006TC-20.00

SHEET 2 OF 2
Dwg 83-3006TC-20.00

EN 13-3534
Revision -

6.0 MECHANICAL

| | |
|---------------------|-----------------------------|
| Substrate Material: | Beryllium Oxide |
| Resistive Film: | Thin Film |
| Cover Material: | Alumina |
| Tab Material: | Beryllium Copper |
| Tab Finish: | Tin/Lead |
| Metric Dimensions: | Provided for reference only |



Unless Otherwise Specified: TOLERANCE: X.XX = ± 0.02 X.XXX = ± 0.010