



## TERMINATION CHIP OUTRIGGER 3 WATTS

DATASHEET PART SERIES: CTH0610F

Sheet 1 of 2

Doc# CTH0610F-1015475

ECO-085210

Revision A

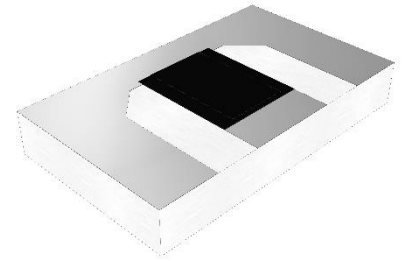
## ORDERING INFORMATION

Part Identifier: CTH0610F

## SPECIFICATIONS

## 1.0 ELECTRICAL

Nominal Impedance:	50 $\Omega$ .
Frequency Range:	DC - 12 GHz.
VSWR:	DC - 6 GHz 1.25:1. 6 - 12 GHz 1.60:1.
Input Power CW:	3 WATTS.
Peak Power:	20W, 10 $\mu$ s pulse width, 1% duty cycle.
DC Resistance:	50 $\Omega$ $\pm$ 5%.



## 2.0 ENVIRONMENTAL

Operating Temperature:	-55°C to +150°C.
Non-operating Temperature:	-65°C to +150°C.
Temperature Coefficient:	$\pm$ 200 PPM / °C Max.

## 3.0 MARKING

Unit Marking:	DOT MARKING, EMC.
---------------	-------------------

## 4.0 QUALITY ASSURANCE

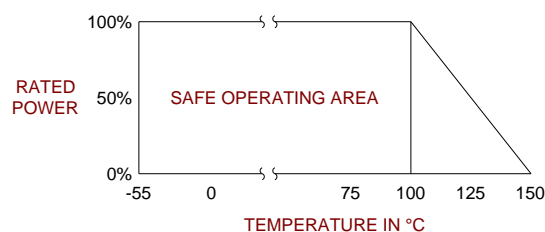
Visual and Mechanical Inspection:	Per 824W107.
DC Resistance Check:	100% DC Resistance Check.
Data Retention:	Standard.

## 5.0 PACKAGING

Standard Packaging:	Tape and Reel.
---------------------	----------------

## 6.0 MECHANICAL

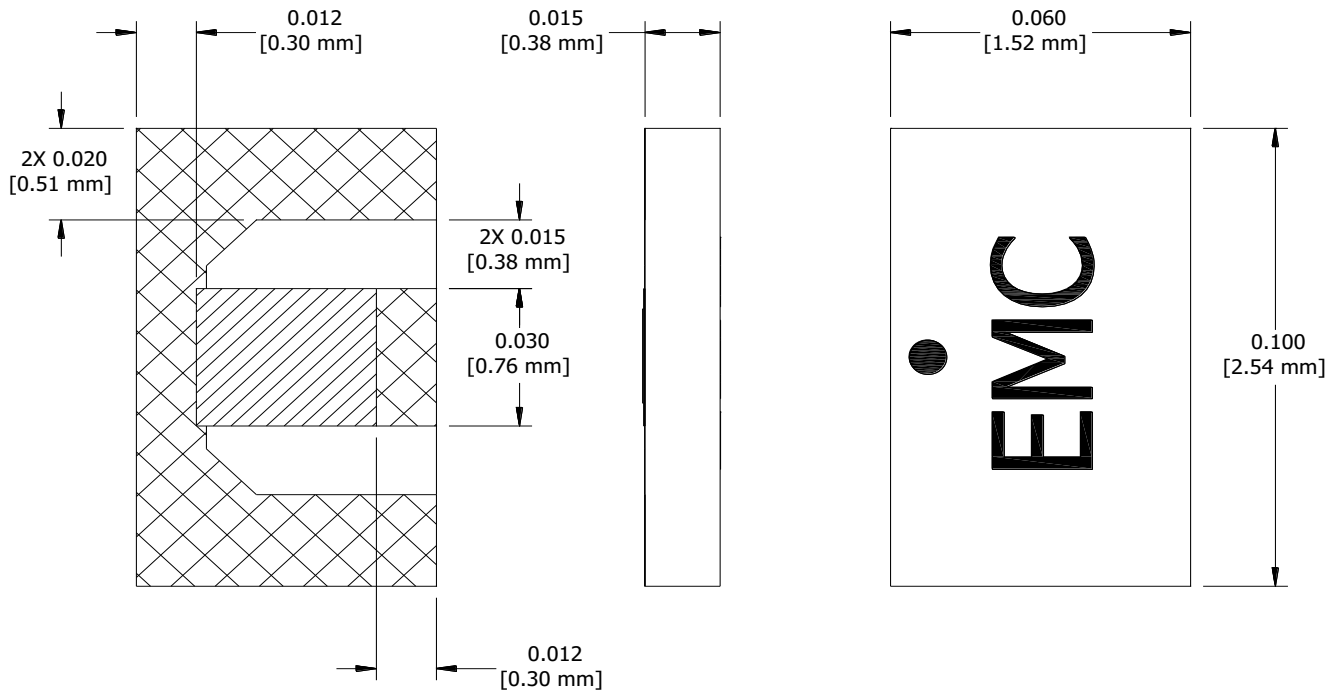
Substrate Material:	Alumina 96%.
Resistive Film:	Thick Film.
Terminal Material:	Thick Film, Silver Plated.
Metric Dimensions:	Provided for reference only.



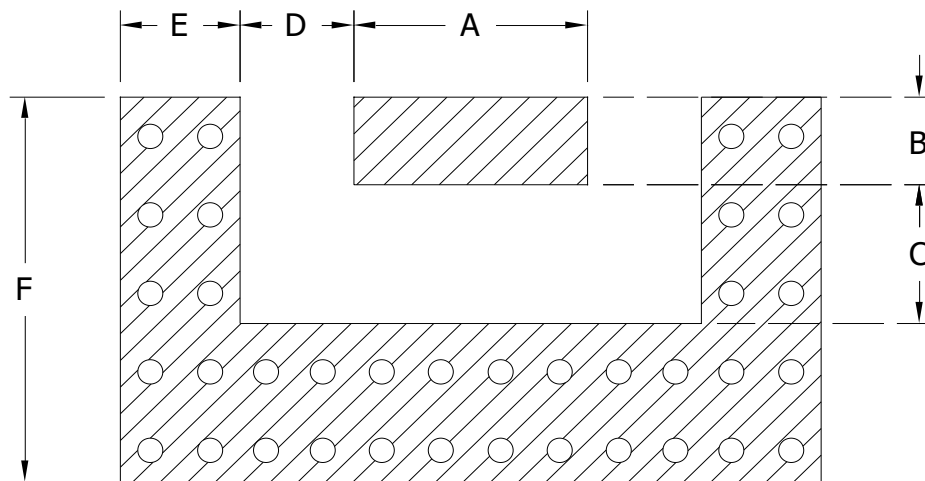


## TERMINATION CHIP OUTRIGGER 3 WATTS

DATASHEET PART SERIES: CTH0610F

Sheet 2 of 2  
Doc# CTH0610F-1015475ECO-085210  
Revision AUnless Otherwise Specified: TOLERANCE: X.XX =  $\pm 0.01$  X.XXX =  $\pm 0.005$ .

## 7.0 SUGGESTED MOUNTING



DIMENSION											
INCHES						METRIC (mm)					
A	B	C	D	E	F	A	B	C	D	E	F
0.035	0.014	0.039	0.007	0.030	0.065	0.889	0.356	0.991	0.178	0.762	01.651