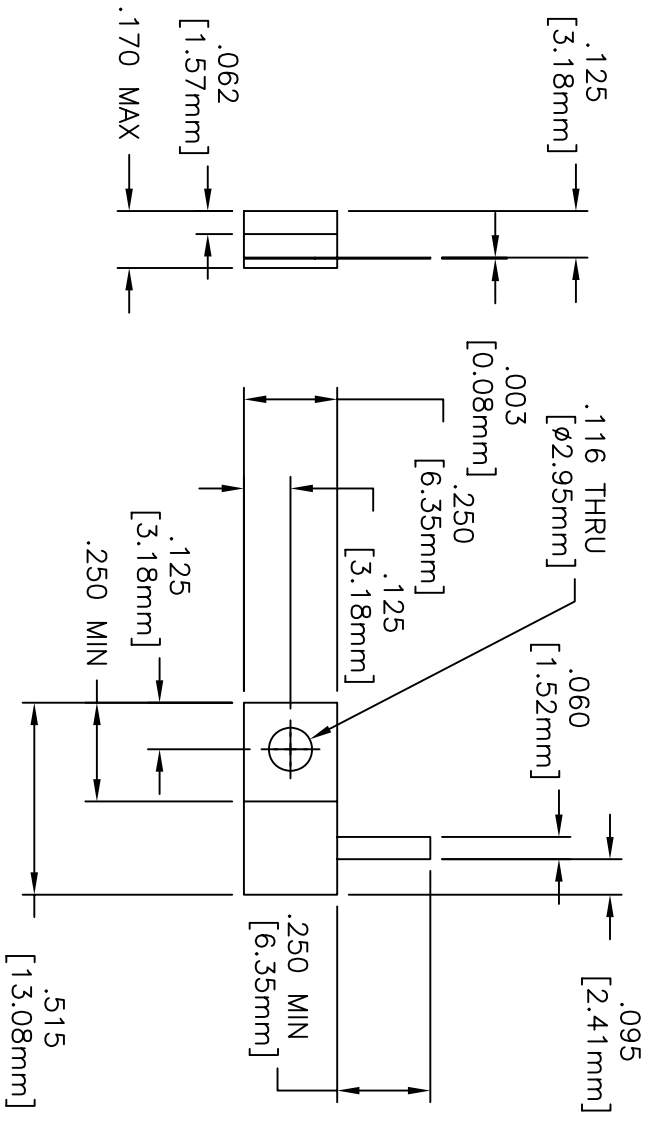
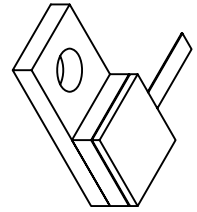


EDD

DRAWING NO.: **32-1031** REV. **H**

NOTES: UNLESS OTHERWISE SPECIFIED, TOLERANCES ARE $\pm .010"$ [.254mm].



MATERIALS:
 MTG. FLANGE: OFHC 1/4 HD
 SUBSTRATE: BERYLLIUM OXIDE
 COVER: ALUMINA
 TAB: BERYLLIUM COPPER PER ASTM B194
 RESISTIVE FILM: NICHROME
FINISH:
 MTG. FLANGE: NICKEL OVER COPPER
 TAB: TIN/LEAD PER MIL-T-10727
ELECTRICAL: (TERMINATION)
 NOMINAL IMPEDANCE: 50 OHMS
 FREQUENCY RANGE: DC-2.0 GHZ
 VSWR (MAX): 1.20:1 DC-1.0 GHZ
 1.35:1 1.0-2.0 GHZ
 AVERAGE POWER: 20 WATTS
 DC RESISTANCE: 50.0 \pm 5% OHMS
 TEMPERATURE COEFFICIENT: \pm 200 PPM/ $^{\circ}$ C MAX
 OPERATING TEMPERATURE: -55 $^{\circ}$ TO +150 $^{\circ}$ ($^{\circ}$ C)

REV.	DESCRIPTION	DRAWN	APVD.	EN# 04-F0164	APVD	DATE	REFERENCE	CATALOG	TITLE
H	EN#08-F0156	JG 3/14/08		UNLESS OTHERWISE SPECIFIED					TERMINATION, FLANGE MOUNT, 20 WATT
F	EN#07-F0055	CRH 01/22/07		1. DO NOT SCALE DRAWING 2. DIMENSIONS ARE IN INCHES 3. DIMENSIONS ARE AFTER PLATING 4. CORNERS, EDGES AND FILLETS: R 5. SURFACE ROUGHNESS: 6. REMOVE ALL BURRS					
				TOLERANCES					
				ANGLES X \pm					
				XXX \pm					
				THE INFORMATION CONTAINED HEREIN IS: (A) CONSIDERED PROPRIETARY TO FLORIDA RF LABS INC.; (B) PROTECTED BY COPYRIGHT OWNED BY FLORIDA RF LABS INC.; (C) CONSIDERED A WORK FOR HIRE UNDER COPYRIGHT LAW; (D) PROTECTED BY TRADE SECRET LAWS WHICH MAKE BELIEF NECESSARY FOR THE PURPOSE WHICH THIS INFORMATION IS SUPPLIED; (E) IS TO BE USED ONLY FOR THE PURPOSE WHICH IS SPECIFIED; (F) THIS INFORMATION SHALL NOT BE DISCLOSED IN WHOLE OR IN PART, TO ANY PARTY, FOR ANY REASON WITHOUT THE EXPRESS WRITTEN CONSENT OF A QUALIFIED EXECUTIVE OF FLORIDA RF LABS INC.					
				SCALE	CAGE CODE	ID NO.	SIZE	DRAWING NO.:	REV.
				2/1	2Y194	A	A	32-1031	H
				MFG.:	CHKD.:			DRAWN: ALM 05/12/04	SHEET OF

