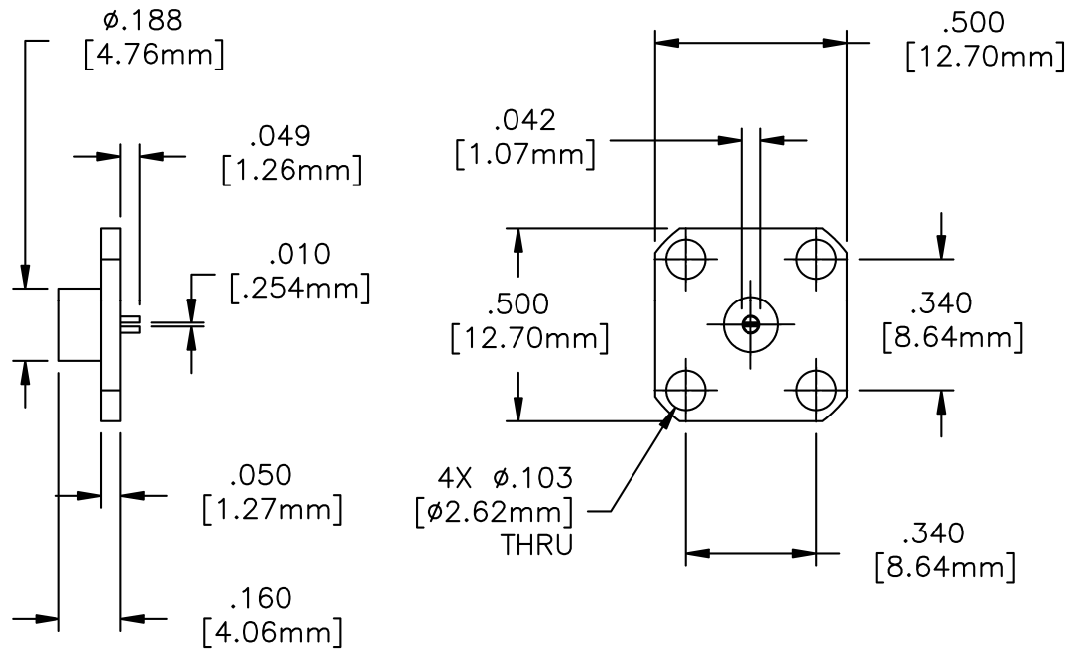


EDD

NOTES:
UNLESS OTHERWISE SPECIFIED, TOLERANCES ARE $\pm .010$ " [1.27mm].

DRAWING NO.:
42-0059

REV.
A



MATERIALS:


MTG. FLANGE: BRASS PER QQ-B-626
SUBSTRATE: ALUMINA OXIDE
TAB: BRASS PER QQ-B-626
RESISTIVE FILM: NICHROME

FINISH:

MTG. FLANGE: NICKEL OVER COPPER
TAB: GOLD OVER COPPER

TECHNICAL:

NOMINAL IMPEDANCE (OHMS): 50
FREQUENCY RANGE (GHz): DC-26.5
VSWR (MAX): 1.30:1
AVERAGE POWER (WATTS): 1
DC RESISTANCE: 50 OHMS $\pm 5\%$
TEMPERATURE COEFFICIENT: ± 200 PPM/ $^{\circ}$ C MAX
OPERATING TEMPERATURE ($^{\circ}$ C): -55° TO $+150^{\circ}$

				ECN#	N/A	APVD	DATE	REFERENCE		 8851 OLD KANSAS AVE. STUART, FL. 34997 772-286-9300		
				UNLESS OTHERWISE SPECIFIED 1. DO NOT SCALE DRAWING 2. DIMENSIONS ARE IN INCHES 3. DIMENSIONS ARE AFTER PLATING 4. CORNERS, EDGES AND FILLETS: R MAX 5. SURFACE ROUGHNESS: 6. REMOVE ALL BURRS				CATALOG				
				TOLERANCES .X \pm .XX \pm .XXX \pm ANGLES X \pm				MATERIAL	-	TITLE	TERMINATION, FLANGE MOUNT, 1 WATT	
				THE INFORMATION CONTAINED HEREIN IS: (A) CONSIDERED PROPRIETARY TO FLORIDA RF LABS INC.; (B) PROTECTED BY COPYRIGHT OWNED BY FLORIDA RF LABS INC.; (C) CONSIDERED A "WORK FOR HIRE" UNDER COPYRIGHT LAW; (D) PROTECTED BY TRADE SECRET LAWS WHICH MAKE ILLEGAL THE MISAPPROPRIATION OF THIS INFORMATION; AND (E) IS TO BE USED SOLELY FOR THE PURPOSE WHICH IT IS SUPPLIED. THIS INFORMATION SHALL NOT BE DISCLOSED IN WHOLE OR IN PART, TO ANY PARTY, FOR ANY REASON WITHOUT THE EXPRESS WRITTEN CONSENT OF A QUALIFIED EXECUTIVE OF FLORIDA RF LABS INC.				FINISH	-			
				A	EN#09-F0709	CRH 07/17/09		SCALE	CAGE CODE ID NO.	SIZE	DRAWING NO.:	REV.
								2/1	2Y194	A	42-0059	A
REV.	DESCRIPTION	DRAWN	APVD.					MFG: -	CHKD.: -		DRAWN: BM 03/27/06	SHEET OF