

TITLE: SPECIFICATION CONTROL DRAWING_R

PART IDENTIFIER: 8275

DESCRIPTION: 50 OHM FLANGE LOAD

ASSEMBLY DWG: 2100244

1.0 SPECIFICATIONS:

1.1 ELECTRICAL:

- 1.1.1 IMPEDANCE: 50 OHMS NOMINAL.
- 1.1.2 FREQUENCY RANGE: DC-18 GHZ.
- 1.1.3 INPUT POWER (MAX @ 60°C):
 - 1.1.3.1 AVERAGE: 10 WATTS.
 - 1.1.3.2 PEAK: 100 WATTS (100 US PULSE WIDTH AND 0.1% DUTY CYCLE).
- 1.1.4 VSWR: DC TO 4.0 GHZ - 1.10 MAX.
 - 4.0 TO 8.0 GHZ - 1.15 MAX.
 - 8.0 TO 12.0 GHZ - 1.25 MAX.
 - 12.0 TO 18.0 GHZ - 1.40 MAX.

1.2 MECHANICAL:

- 1.2.1 OUTLINE DWG: SEE SHEET 2.
- 1.2.2 WORKMANSHIP: PER MIL-STD-454, REQUIREMENT 9.

1.3 ENVIRONMENTAL:

- 1.3.1 TEMPERATURE RANGE:
 - 1.3.2.1 NON-OPERATING: -55°C TO +150°C.
 - 1.3.2.2 OPERATING: -55°C TO +125°C.
- 1.3.3 VIBRATION: PER MIL-STD-202, METHOD 201 AND MIL-D-39030.
- 1.3.4 SHOCK: PER MIL-STD-202, METHOD 213, COND. I.
- 1.3.5 MOISTURE: PER MIL-STD-202, METHOD 106 AND MIL-D-39030 EXCEPT LOADING VOLTAGE IS NOT APPLICABLE

2.0 UNIT MARKING: "EMCT"

LEGIBILITY AND PERMANENCY PER MIL-STD-130.

3.0 QUALITY ASSURANCE:

- 3.1 SAMPLE INSPECT PER ANSI/ASQC Z1.4 GENERAL INSPECTION, LEVEL II, AQL = 1.0.
 - 3.1.1 VISUAL AND MECHANICAL EXAMINATION FOR CONFORMANCE TO CONTROL DRAWING REQUIREMENTS, INCLUDING SMA INTERFACE.
 - 3.1.2 MEASURE AND RECORD VSWR @ 1 TO 18 GHZ IN 1 GHZ INCREMENTS.
 - 3.1.2.1 ACCEPTANCE LIMITS: SEE ELECTRICAL 1.1.4.

3.2 TEST DATA REQUIREMENTS:

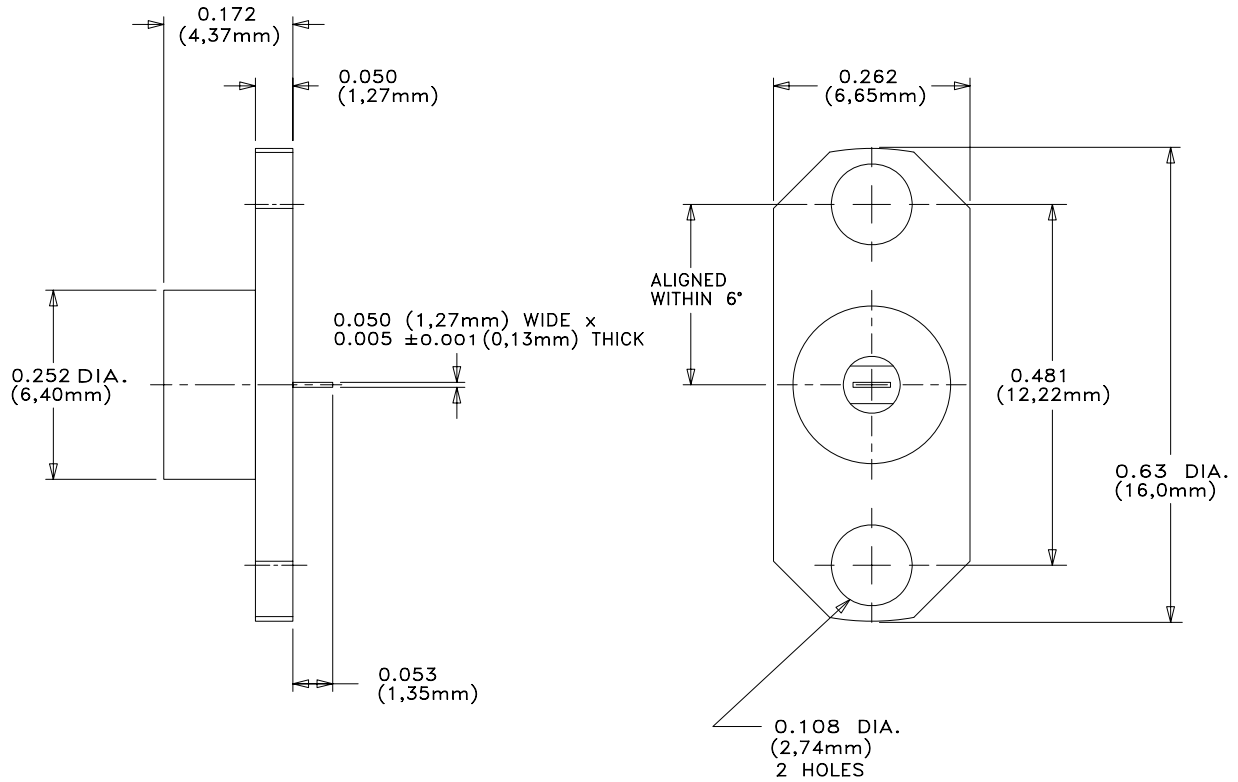
- 3.2.1 NO TEST DATA REQUIRED FOR CUSTOMER.
- 3.2.2 DATA RETENTION - STANDARD.

4.0 PACKAGING: STANDARD PACK PER 755W002

EMC TECHNOLOGY 8851 SW OLD KANSAS AVE. STUART, FL 34997	CAGE CODE # 24602		DWG #	1000695000
	CHANGE NOTICE	EN 10-0911	REV LVL	C
			SHEET	1 OF 2

PART ID REF

8275

**MECHANICAL SPECIFICATIONS:****CASE:**

MATERIAL - ALUMINUM ALLOY, QQ-A-225/3.
FINISH - CHROMATE, MIL-C-5541.

PIN:

MATERIAL - BERYLLIUM COPPER ASTM B197.
FINISH - GOLD, MIL-G-45204, TYPE II, CLASS 1.

DIELECTRIC:

MATERIAL - TEFLON, ASTM D1710.

CERAMIC:

MATERIAL - BERYLLIA, ASTM F-356.

METRIC EQUIVALENTS ARE GIVEN FOR
REFERENCE INFORMATION ONLY



8851 SW OLD KANSAS AVE
STUART, FL 34997
PHONE NO. (772) 286-9300
FAX NO. (772) 283-5286

UNLESS OTHERWISE
SPECIFIED DIMENSIONS
ARE IN INCHES

TOLERANCES

FRACT	---
ANG	---
XX	±0.01
XXX	±0.005
XXXX	---

THESE DRAWINGS AND SPECIFICATIONS ARE THE PROPERTY OF EMC TECHNOLOGY INC AND SHALL NOT BE DUPLICATED OR USED AS BASIS FOR THE MANUFACTURE OR SALE OF PARTS OR DEVICES WITHOUT PERMISSION.

CAGE CODE

24602

SCALE

1:1

DRAWN BY

CME 12-12-00

CHECKED BY

APPROVED BY

DAR 12-13-00

REV

C

CHANGE NOTICE

EN 10-0911

DRAWING NO

1000695000

SHEET

2 OF 2