

**TITLE: SPECIFICATION CONTROL DRAWING**

**PART IDENTIFIER:** 8425

**DESCRIPTION:** 50 OHM FLANGE LOAD

**ASSEMBLY DWG:** 2100924

**1.0 SPECIFICATIONS:**

1.1 ELECTRICAL:

- 1.1.1 IMPEDANCE: 50 OHMS NOMINAL.
- 1.1.2 FREQUENCY RANGE: DC - 12GHZ.
- 1.1.3 INPUT POWER (MAX @ 60°C): (DERATED LINEARLY TO ZERO POWER @ 150°C)
  - 1.1.3.1 AVERAGE: 10 WATTS.
  - 1.1.3.2 PEAK: 100 WATTS (100US PULSE WIDTH AND 0.1% DUTY CYCLE).
- 1.1.4 VSWR: DC TO 4.0 GHZ - 1.10 MAX.  
4.0 TO 8.0 GHZ - 1.15 MAX.  
8.0 TO 12.0 GHZ - 1.20 MAX.

1.2 MECHANICAL:

- 1.2.1 OUTLINE DWG: SEE SHEET 2.

1.3 ENVIRONMENTAL:

- 1.3.1 TEMPERATURE RANGE:
  - 1.3.1.1 NON-OPERATING: -55°C TO +150°C.
  - 1.3.1.2 OPERATING: -55°C TO +150°C.
- 1.3.2 VIBRATION: PER MIL-STD-202, METHOD 201 AND MIL-D-39030.
- 1.3.3 SHOCK: PER MIL-STD-202, METHOD 213, COND. I.
- 1.3.4 MOISTURE: PER MIL-STD-202, METHOD 106 AND MIL-D-39030 EXCEPT LOADING VOLTAGE IS NOT APPLICABLE.

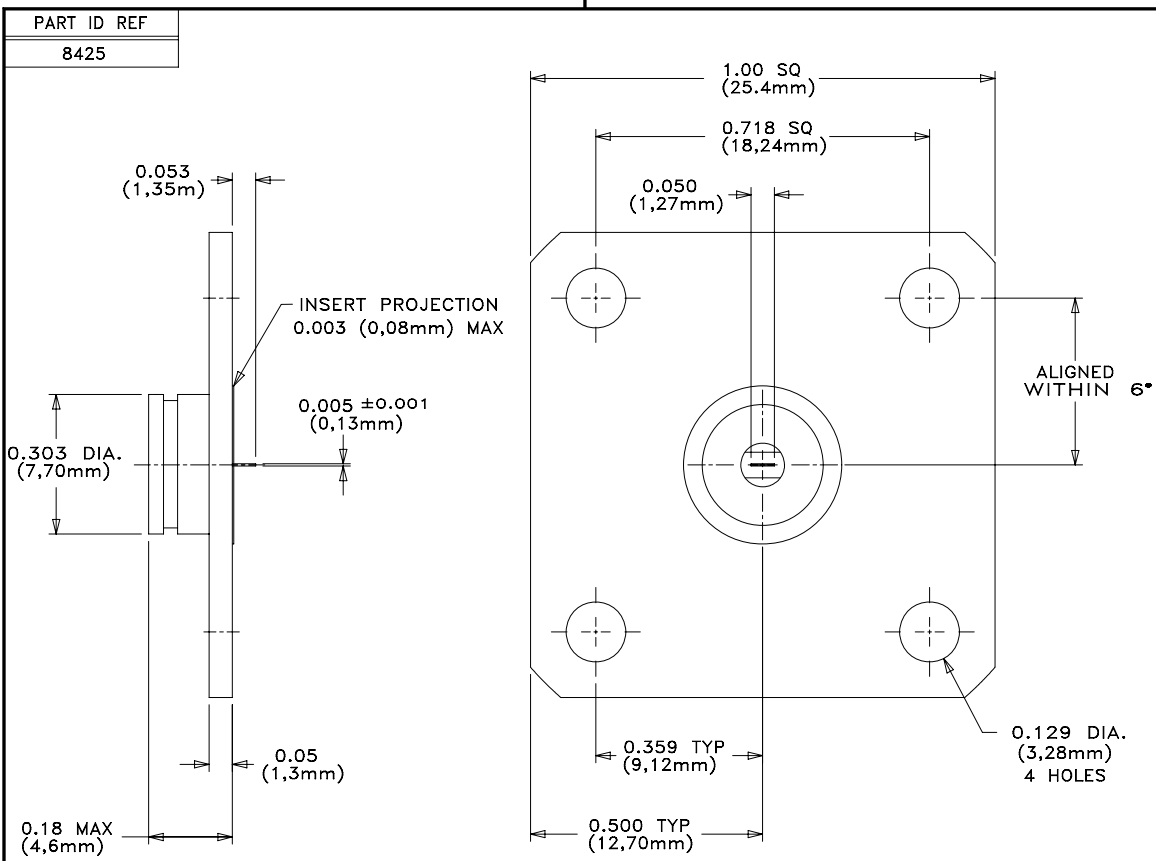
**2.0 UNIT MARKING:** NONE.

**3.0 QUALITY ASSURANCE:**

- 3.1 PERFORM INSPECTION IN ACCORDANCE WITH QA0006 AND FORM0357 FOR COMMERCIAL GRADE PRODUCT.
- 3.2 TEST DATA REQUIREMENTS:
  - 3.2.1 NO TEST DATA REQUIRED FOR CUSTOMER.
  - 3.2.2 DATA RETENTION – 24 MONTHS.

**4.0 PACKAGING:** STANDARD PACK PER MC0023.

<b>EMC TECHNOLOGY</b> <b>8851 SW OLD KANSAS AVE.</b> <b>STUART, FL 34997</b>	<b>CAGE CODE # 24602</b>		<b>DWG #</b>	1008105000
	<b>CHANGE NOTICE</b>	EN 01-305	<b>REV LVL</b>	D
			<b>SHEET</b>	1 OF 2



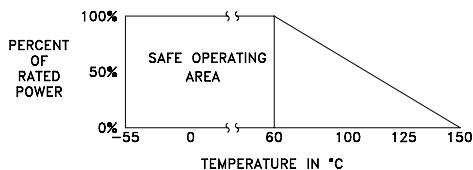
**MECHANICAL SPECIFICATIONS:**

- FLANGE CASE FACE:**  
 MATERIAL - ALUMINUM ALLOY, QQ-A-250.  
 FINISH - CHROMATE, MIL-C-5541.
- FLANGE HUB:**  
 MATERIAL - ALUMINUM ALLOY, QQ-A-225.  
 FINISH - CHROMATE, MIL-C-5541.
- PIN:**  
 MATERIAL - BERYLLIUM COPPER, ASTM B197.  
 FINISH - GOLD, MIL-G-45204, TYPE II, CLASS 1.
- DIELECTRIC:**  
 MATERIAL - TEFLON, ASTM D1710.
- CERAMIC:**  
 MATERIAL - BERYLLIA, ASTM F-356.

METRIC EQUIVALENTS GIVEN IN [mm]  
 FOR REFERENCE INFORMATION ONLY



**POWER RATING AND DERATING**



 8851 SW OLD KANSAS AVE STUART, FL 34997 PHONE NO. (772)286-9300 FAX NO. (772)283-5286	UNLESS OTHERWISE SPECIFIED DIMENSIONS ARE IN INCHES <b>TOLERANCES</b> FRACT --- -- ANG --- -- XX ±0.01 XXX ±0.005 XXXX --- --	THESE DRAWINGS AND SPECIFICATIONS ARE THE PROPERTY OF EMC TECHNOLOGY INC AND SHALL NOT BE DUPLICATED OR USED AS BASIS FOR THE MANUFACTURE OR SALE OF PARTS OR DEVICES WITHOUT PERMISSION.																								
	<table border="1" style="width: 100%; border-collapse: collapse;"> <tr> <td style="width: 10%;">CAGE CODE</td> <td style="width: 10%;">SCALE</td> <td style="width: 20%;">DRAWN BY</td> <td style="width: 15%;">CHECKED BY</td> <td style="width: 25%;">APPROVED BY</td> </tr> <tr> <td>24602</td> <td>1:1</td> <td>CME 08/15/2001</td> <td></td> <td>DAR 8/21/01</td> </tr> <tr> <td>REV</td> <td colspan="2">CHANGE NOTICE</td> <td>DRAWING NO</td> <td>SHEET</td> </tr> <tr> <td>D</td> <td colspan="2">EN 01-305</td> <td>1008105000</td> <td>2 OF 2</td> </tr> </table>	CAGE CODE	SCALE	DRAWN BY	CHECKED BY	APPROVED BY	24602	1:1	CME 08/15/2001		DAR 8/21/01	REV	CHANGE NOTICE		DRAWING NO	SHEET	D	EN 01-305		1008105000	2 OF 2					
CAGE CODE	SCALE	DRAWN BY	CHECKED BY	APPROVED BY																						
24602	1:1	CME 08/15/2001		DAR 8/21/01																						
REV	CHANGE NOTICE		DRAWING NO	SHEET																						
D	EN 01-305		1008105000	2 OF 2																						