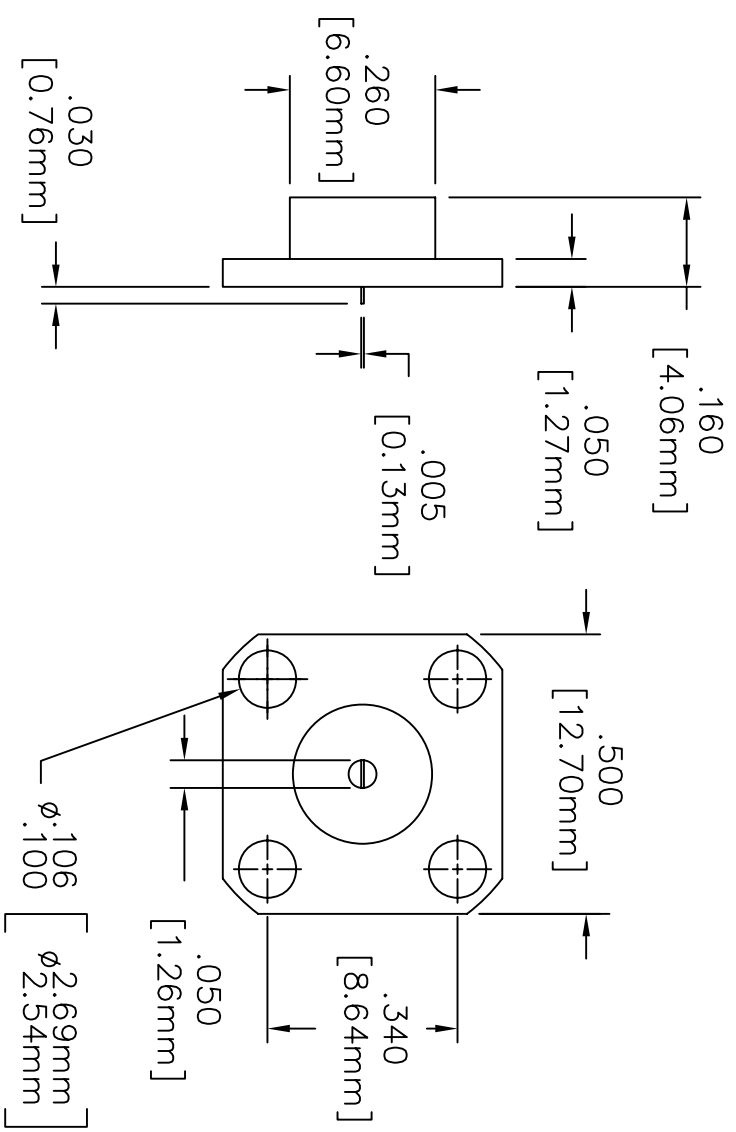


EDD

DRAWING NO.: **42-1003** REV. **E**

NOTES: UNLESS OTHERWISE SPECIFIED, TOLERANCES ARE $\pm .010"$ [$.254\text{mm}$].



MATERIALS:

BODY: COPPER PER ASTM B301
 CONTACT: BERYLLIUM COPPER
 INSULATOR: TEFLON PER MIL-P-19468
 SUBSTRATE: BeO
 RESISTIVE FILM: THIN FILM

FINISH:

BODY: NICKEL PER QQ-N-290A
 CONTACT: GOLD PER MIL-G-45204B

ELECTRICAL: (TERMINATION)

NOMINAL IMPEDANCE: 50 OHMS
 FREQUENCY RANGE: DC-18 GHz
 VSWR: (MAX) 1.30:1
 AVERAGE POWER: 10 WATTS
 DC RESISTANCE: $50 \pm 5\%$ OHMS
 TEMPERATURE COEFFICIENT: ± 200 PPM MAX
 OPERATING TEMPERATURE: -55°C TO $+150^{\circ}\text{C}$

REV.	DESCRIPTION	DRAWN	APVD.	EN#	APVD	DATE	REFERENCE	MATERIAL	FINISH	TITLE	
E	08-F0808	OUC 09/02/08					CATALOG			TERMINATION, TYPE SMA, FLANGE 15 W, TAB CONTACT	
				1. DO NOT SCALE DRAWING 2. DIMENSIONS ARE IN INCHES 3. DIMENSIONS ARE AFTER PLATING 4. CORNERS, EDGES AND FILLETS: R.XXX MAX 5. SURFACE ROUGHNESS: 63/ 6. REMOVE ALL BURRS							
				THE INFORMATION CONTAINED HEREIN IS: (A) CONSIDERED PROPRIETARY TO FLORIDA RF LABS INC.; (B) PROTECTED BY COPYRIGHT OWNED BY FLORIDA RF LABS INC.; (C) CONSIDERED A WORK FOR HIRE UNDER COPYRIGHT LAW; (D) PROTECTED BY TRADE SECRET LAWS WHICH MAKE RELEASE OF THIS INFORMATION FOR THE PURPOSES WHICH ARE SPECIFIED IN ANY PART, FOR ANY REASON WITHOUT THE EXPRESS WRITTEN CONSENT OF A QUALIFIED EXECUTIVE OF FLORIDA RF LABS INC.							
				TOLERANCES X \pm XX \pm XXX \pm ANGLES X \pm X							
				SCALE	CAGE CODE	ID NO.	SIZE	DRAWING NO.:		REV.	
				2/1	2Y194	A	A	42-1003		E	
				MFG:	CHKD.:			DRAWN:	MWS 05/01/08	SHEET	OF
								8851 OLD KANSAS AVE. STUART, FL. 34997 772-286-9300			