

TITLE: SPECIFICATION CONTROL DRAWING

PART IDENTIFIER: 8115

DESCRIPTION: 50 OHM FLANGE LOAD

ASSEMBLY DWG: 2100094

1.0 SPECIFICATIONS:

1.1 ELECTRICAL:

- 1.1.1 IMPEDANCE: 50 OHMS NOMINAL.
- 1.1.2 FREQUENCY RANGE: DC-26.5GHZ.
- 1.1.3 INPUT POWER (MAX @ 60°C): (DERATED LINEARLY TO ZERO POWER @ 150°C)
 - 1.1.3.1 AVERAGE: 1 WATT.
 - 1.1.3.2 PEAK: 100 WATTS (100US PULSE WIDTH AND 0.1% DUTY CYCLE).
- 1.1.4 VSWR: SEE TABLE BELOW.

MAXIMUM VSWR				
DC - 4 GHZ	4 - 8 GHZ	8 - 12 GHZ	12 - 18 GHZ	18 - 26.5 GHZ
1.05	1.10	1.15	1.15	1.20

1.2 MECHANICAL:

- 1.2.1 OUTLINE DWG: SEE SHEET 2.

1.3 ENVIRONMENTAL:

- 1.3.1 TEMPERATURE RANGE:
 - 1.3.1.1 NON-OPERATING: -55°C TO +150°C.
 - 1.3.1.2 OPERATING: -55°C TO +150°C.
- 1.3.2 VIBRATION: PER MIL-STD-202, METHOD 201 AND MIL-D-39030.
- 1.3.3 SHOCK: PER MIL-STD-202, METHOD 213, COND. I.
- 1.3.4 MOISTURE: PER MIL-STD-202, METHOD 106 AND MIL-D-39030 EXCEPT LOADING VOLTAGE IS NOT APPLICABLE.

2.0 UNIT MARKING: "EMCT"

LEGIBILITY AND PERMANENCY PER MIL-STD-130.

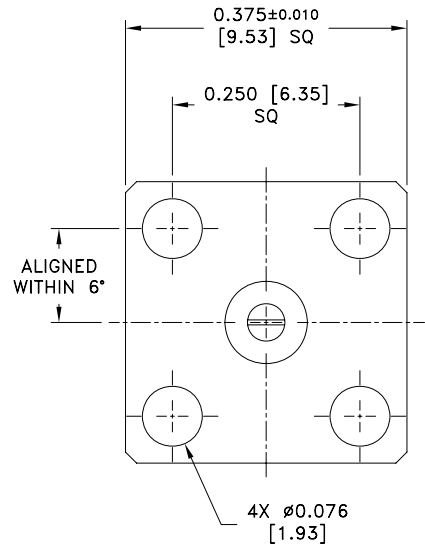
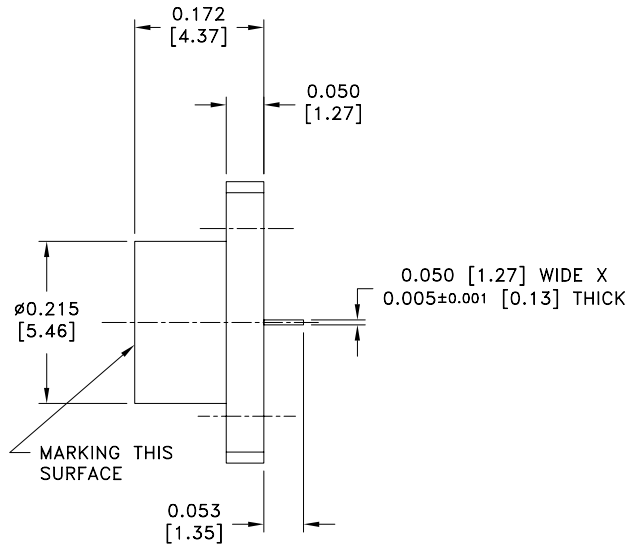
3.0 QUALITY ASSURANCE:

- 3.1 PERFORM INSPECTION IN ACCORDANCE WITH 824W170 AND 824F036 FOR COMMERCIAL GRADE PRODUCT.
- 3.2 TEST DATA REQUIREMENTS:
 - 3.2.1 NO TEST DATA REQUIRED FOR CUSTOMER.
 - 3.2.2 DATA RETENTION - 24 MONTHS

4.0 PACKAGING: STANDARD PACK PER 755W002.

EMC TECHNOLOGY 8851 SW OLD KANSAS AVE STUART, FLORIDA 34997	CAGE CODE # 24602		DWG #	1004745000
	CHANGE NOTICE	EN 10-0911	REV LVL	G
			SHEET	1 OF 2

PART ID REF
8115

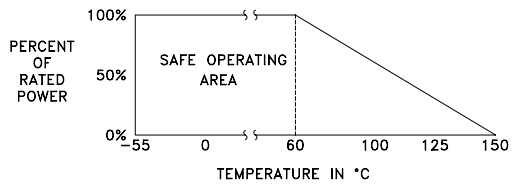


MECHANICAL SPECIFICATIONS:

- CASE:**
 MATERIAL - ALUMINUM ALLOY, QQ-A-225.
 FINISH - CHROMATE, MIL-C-5541.
- PIN:**
 MATERIAL - BERYLLIUM COPPER, ASTM B197.
 FINISH - GOLD, MIL-G-45204, TYPE II, CLASS 1.
- DIELECTRIC:**
 MATERIAL - AIR.
- CERAMIC:**
 MATERIAL - ALUMINA, MIL-I-10.

METRIC EQUIVALENTS GIVEN IN [mm] FOR REFERENCE INFORMATION ONLY

POWER RATING AND DERATING



 8851 SW OLD KANSAS AVE STUART, FL 34997 PHONE NO. (772)286-9300 FAX NO. (772)283-5286	UNLESS OTHERWISE SPECIFIED DIMENSIONS ARE IN INCHES TOLERANCES FRACT ----- ANG ----- XX ±0.01 XXX ±0.005 XXXX -----	THESE DRAWINGS AND SPECIFICATIONS ARE THE PROPERTY OF EMC TECHNOLOGY INC AND SHALL NOT BE DUPLICATED OR USED AS BASIS FOR THE MANUFACTURE OR SALE OF PARTS OR DEVICES WITHOUT PERMISSION.					
		CAGE CODE 24602	SCALE 1:1	DRAWN BY CME 09/07/2001	CHECKED BY _____	APPROVED BY DAR 9/14/01	
	REV G	CHANGE NOTICE EN 10-0911	DRAWING NO 1004745000		SHEET 2 OF 2		