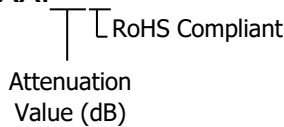
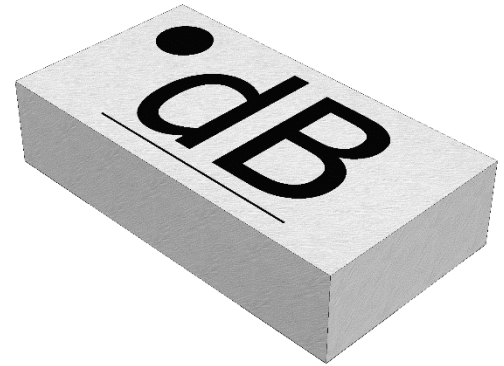




ORDERING INFORMATION

Part Identifier:

TS06XXF

 RoHS Compliant
 Attenuation Value (dB)



SPECIFICATIONS

1.0 ELECTRICAL

Nominal Impedance:	50 ohms
Frequency Range:	DC - 20 GHz
Attenuation Values Available:	0 – 12, 15 and 20 dB (See Table)
Attenuation Accuracy:	See Table
Input Power CW:	0.5-3W based on value (0-1dB 3W; 2-3dB 1W; 4-12,15,20dB 0.5W)
Peak Power:	10X CW (1 μ s pulse width, 1% duty cycle)
VSWR:	See Table

Attenuation Value (dB)	Attenuation Accuracy (dB)		VSWR (x:1 Typical*)	
	DC – 10 GHz	10 – 20 GHz	DC – 10 GHz	10 – 20 GHz
0	CONTINUITY ONLY			
1 - 9	± 0.50	± 0.50	1.25:1	1.35:1
10-12,15,20	± 0.75	± 1.00	1.25:1	1.35:1

*For Actual Measurements See Website

2.0 ENVIRONMENTAL

Operating Temperature:	-55°C to +150°C
Non-operating Temperature:	-65°C to +150°C
Temperature Coefficient:	+/-200 PPM / °C max

3.0 MARKING

Unit Marking: dB Value and Alignment Dot

4.0 QUALITY ASSURANCE

Sample Inspect Per MIL-STD-105, Level II, 1.0% AQL.
 Visual and Mechanical Examination for Conformance to Outline Drawing
 Measure DC Resistance and RF
 Data Retention – Standard

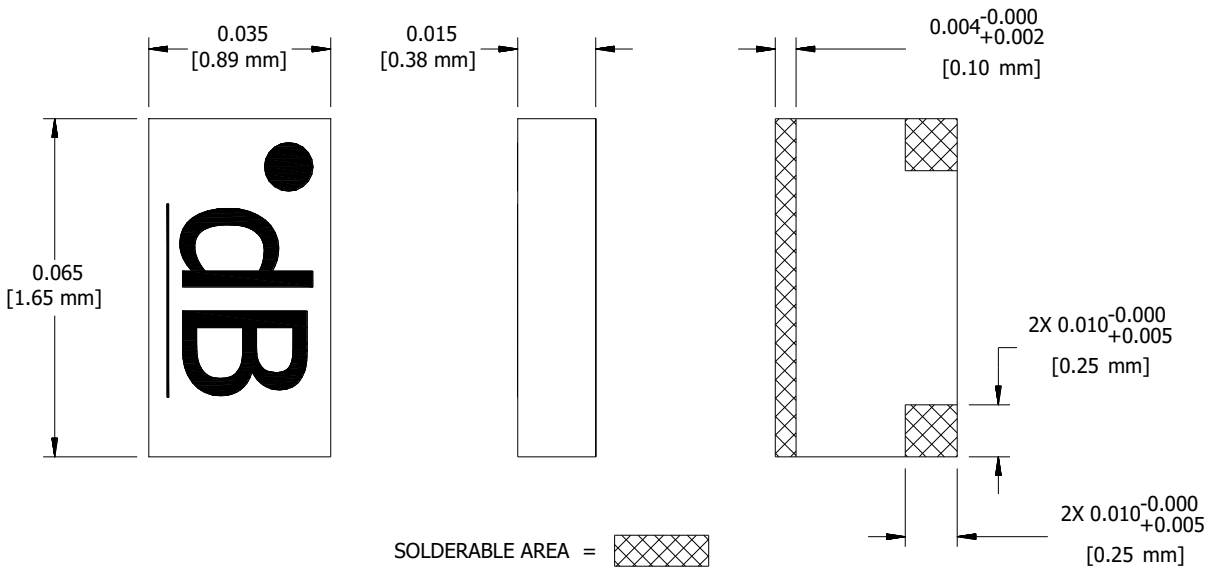
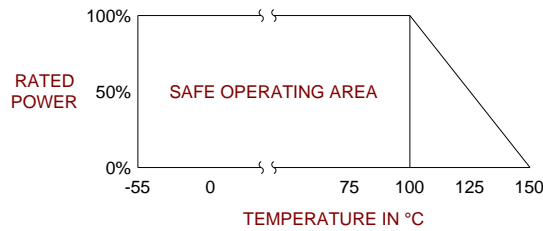
5.0 PACKAGING

Standard Packaging: Tape and Reel



6.0 MECHANICAL

Substrate Material:	Alumina
Resistive Film:	Tantalum nitride
Terminal Material:	Solderable Gold over Nickel
Protective Coating:	Silicon Nitride
Metric Dimensions:	Provided for reference only



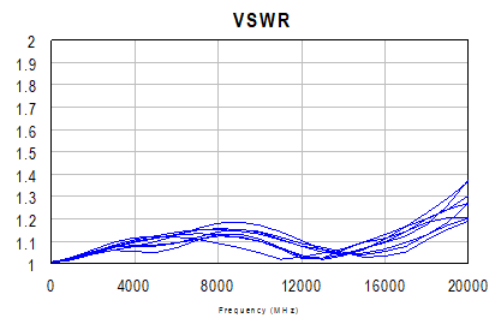
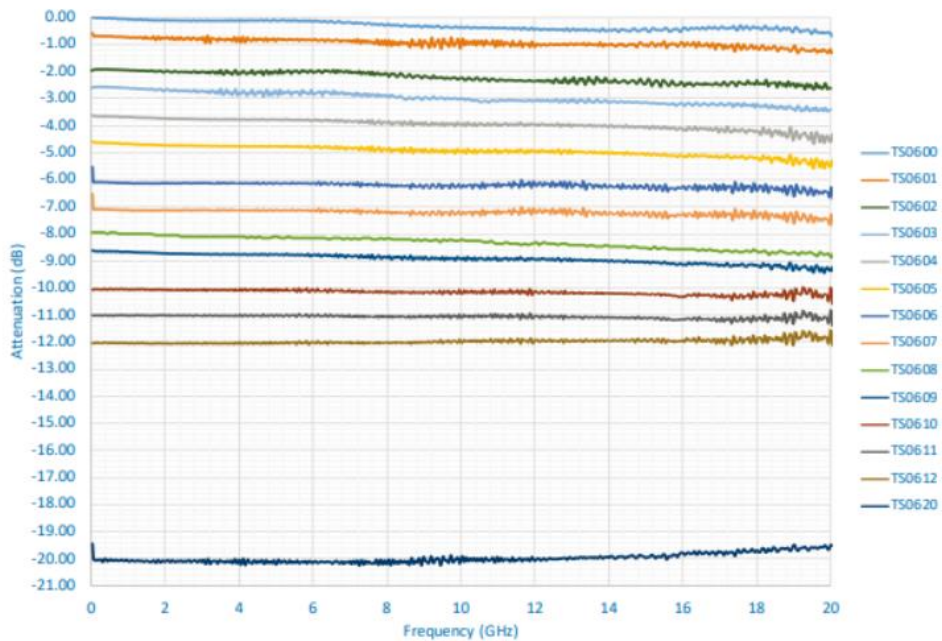
Unless Otherwise Specified: TOLERANCE: X.XX = ± 0.01 X.XXX = ± 0.005



ATTENUATOR

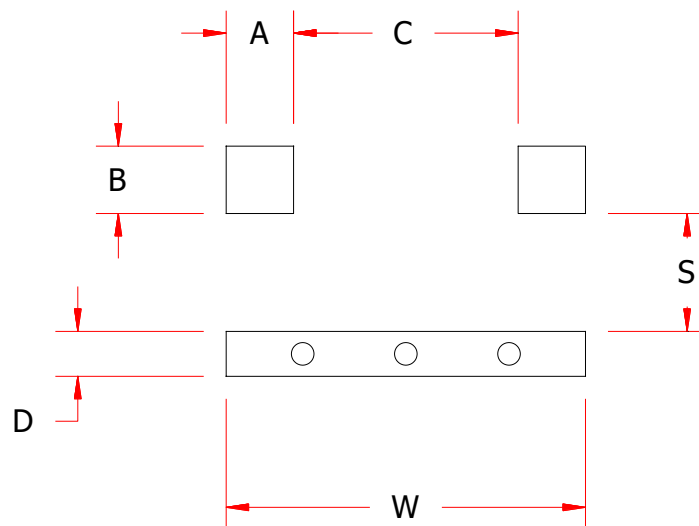
DATASHEET PART SERIES: TS06XXF

7.0 TYPICAL PERFORMANCE AT 25°C



8.0 RECOMMENDED PCB LAYOUT

SUGGESTED MOUNTING



inches						mm					
A	B	C	D	S	W	A	B	C	D	S	W
0.012	0.012	0.040	0.008	0.021	0.068	0.30	0.30	1.02	0.20	0.53	1.73