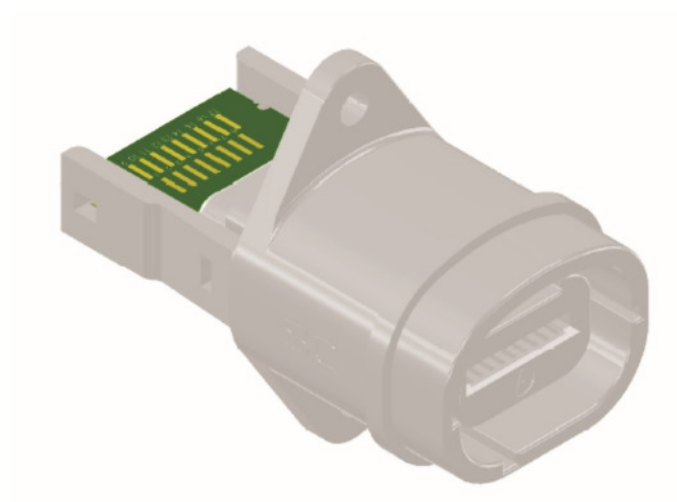


Field Service Instructions

Replacement Panel Mount Receptacle Connector

ECL34ERX-N

David Salomon, 02/21/2018



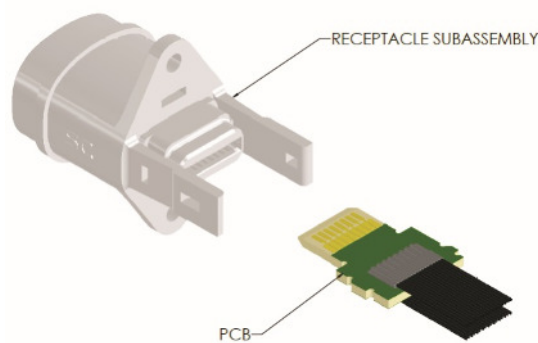
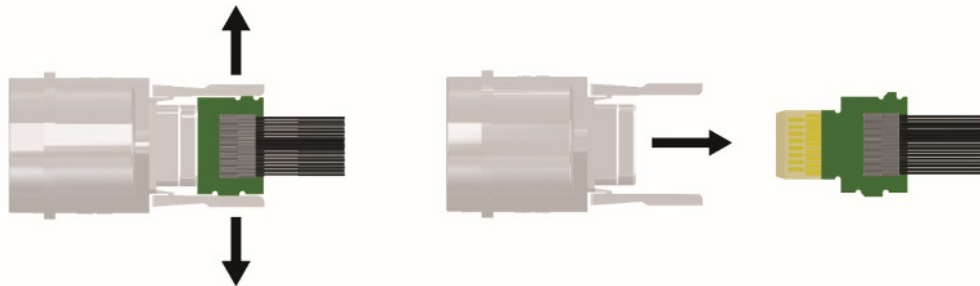
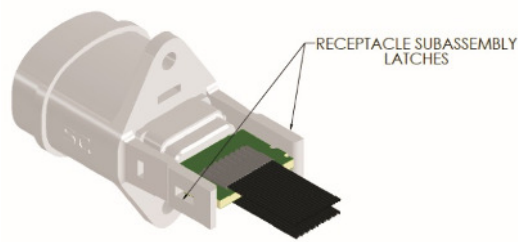
Field Service Instructions

Replacement Panel Mount Receptacle Connector – ECL34ERX

Replacement Panel Mount Receptacle Connector- Eclipta

Connector Kit without PCB PN:	ECL34ERX-N
'X' represents Keying Designation ('A' through 'F')	

Step 1: Disengage receptacle subassembly latches and remove wired PCB while ensuring not to damage soldered wire connections to PCB. Discard old receptacle subassembly.



Step 2: Position PCB as depicted below, assuring the ears of the PCB are oriented relative to the top of the replacement receptacle subassembly as depicted in images below. Install PCB into receptacle subassembly until both ears of PCB snap into place.

