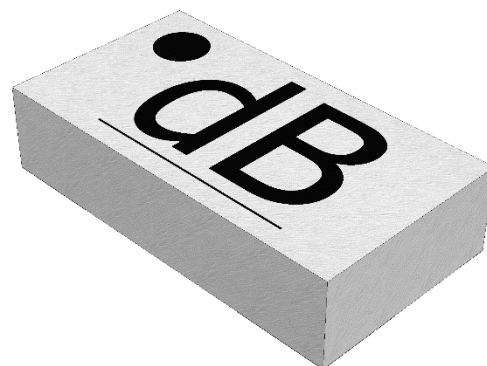


ORDERING INFORMATION

Part Identifier:

TS06XXS
 ↓
 Attenuation
 Value (dB)



SPECIFICATIONS

1.0 ELECTRICAL

Nominal Impedance:	50 Ω
Frequency Range:	DC - 20 GHz
Attenuation Values Available:	0 – 12; 15,20 dB (See Table)
Attenuation Accuracy:	See Table
Input Power CW:	0.5-3W based on value (0-1dB 3W; 2-3dB 1W; 4-12,15,20dB 0.5W)
Peak Power:	10X CW (1 μs pulse width, 1% duty cycle)
VSWR:	See Table

Attenuation Value (dB)	Attenuation Accuracy (dB)		VSWR (x:1 Typical*)	
	DC – 10 GHz	10 – 20 GHz	DC – 10 GHz	10 – 20 GHz
0	CONTINUITY ONLY			
1 - 9	± 0.50	± 0.50	1.25:1	1.35:1
10-12,15,20	± 0.75	± 1.00	1.25:1	1.35:1

*For Actual Measurements See Website

2.0 ENVIRONMENTAL

Operating Temperature:	-55°C to +150°C
Non-operating Temperature:	-65°C to +150°C
Temperature Coefficient:	+/-200 PPM / °C max

3.0 MARKING

Unit Marking: dB Value and Alignment Dot

4.0 QUALITY ASSURANCE

Sample Inspect Per MIL-STD-105, Level II, 1.0% AQL.

Visual and Mechanical Inspection for Conformance to Outline Drawing

Measure Attenuation and VSWR

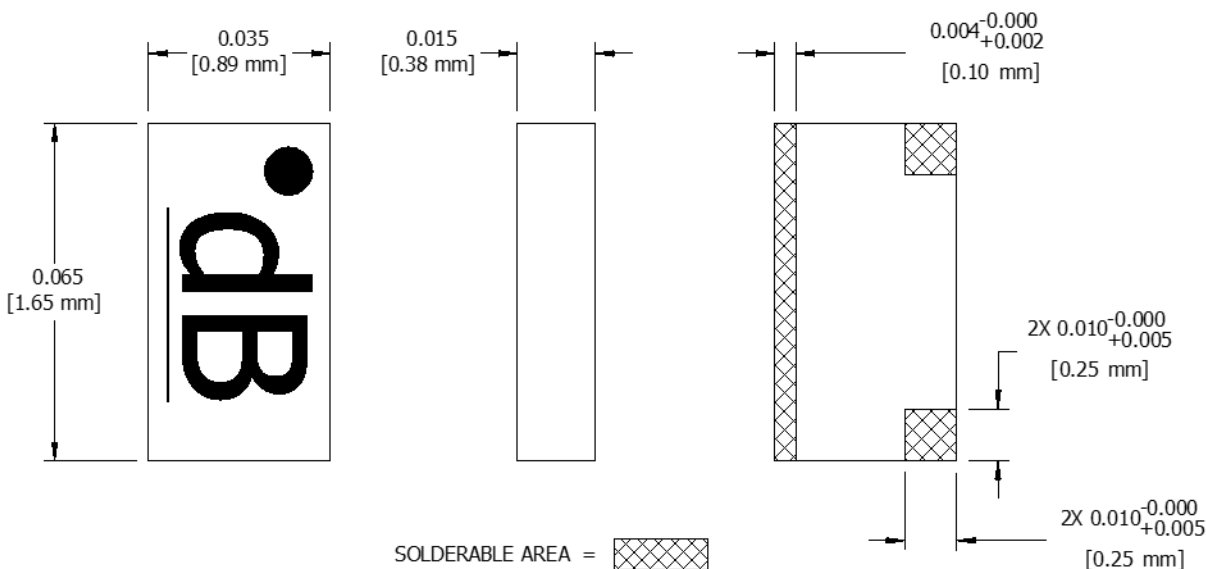
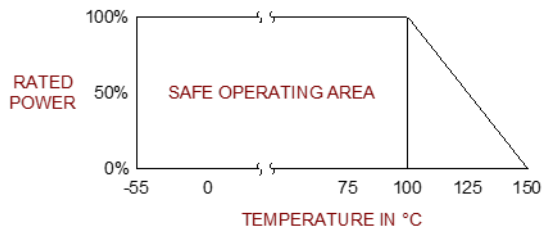
Data Retention - Standard

5.0 PACKAGING

Standard Packaging: Tape and Reel

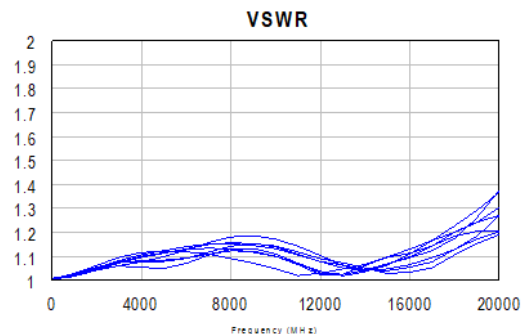
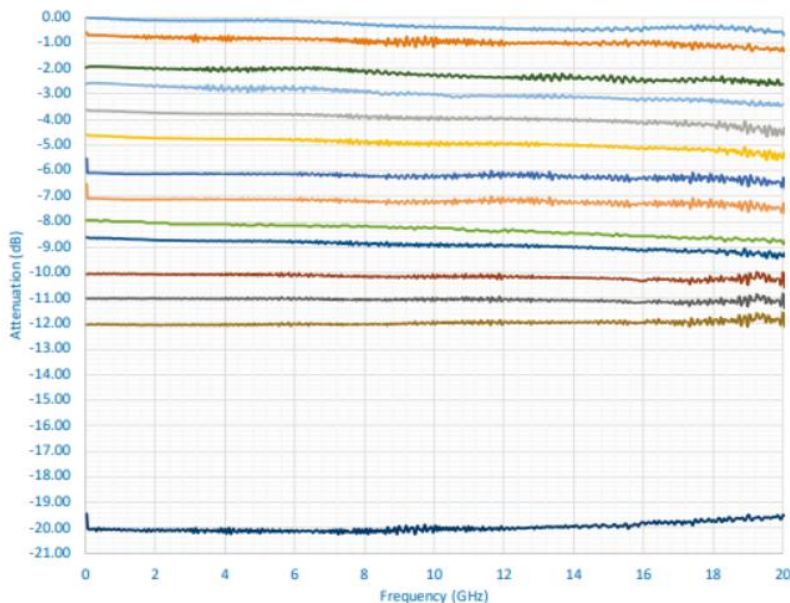
6.0 MECHANICAL

Substrate Material:	Alumina
Resistive Film	Tantalum Nitride
Terminal Material	Thin Film Palladium
Final Finish	60/40 SnPb Solder over Nickel Plating
Protective Coating	Silicon Nitride (Due to the properties of this material slight variations in color are normal)
Metric Dimensions	Provided for Reference Only



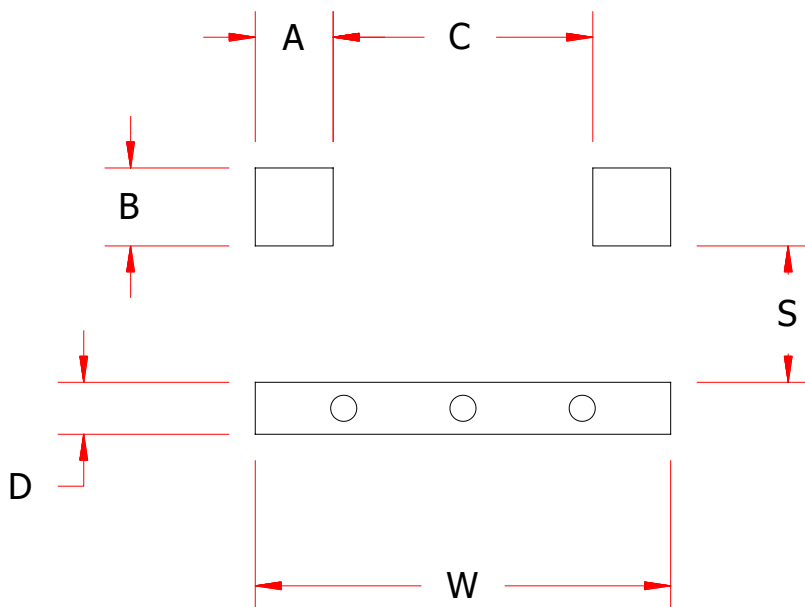
Unless Otherwise Specified: TOLERANCE: X.XX = ± 0.01 X.XXX = ± 0.005

7.0 TYPICAL PERFORMANCE AT 25°C



8.0 RECOMMENDED PCB LAYOUT

SUGGESTED MOUNTING



inches						mm					
A	B	C	D	S	W	A	B	C	D	S	W
0.012	0.012	0.040	0.008	0.021	0.068	0.30	0.30	1.02	0.20	0.53	1.73