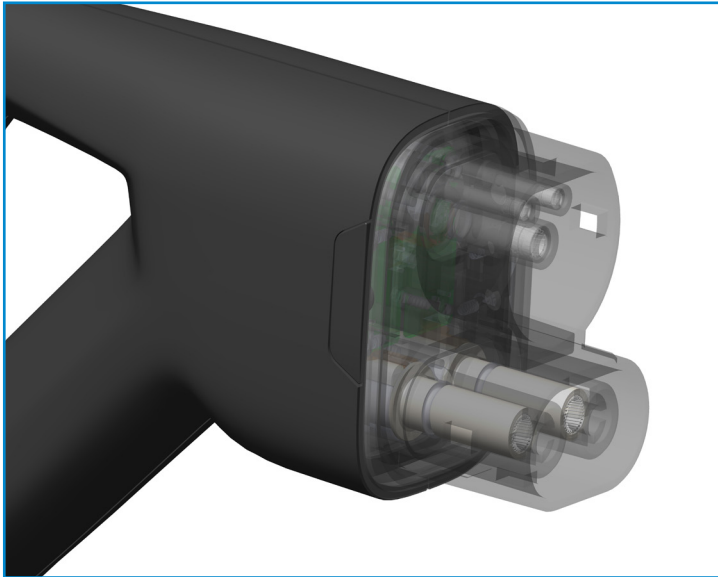


Hypertac Green Connect™

High Power Contact Technology



Hypertac Green Connect™ Contact Technology offers a high power contact solution with unrivalled low contact resistance

The technology uses a set of socket wires, properly angled to form a hyperboloid-shaped, elastic and conductive sleeve. When the mating pin enters the socket, the sleeve expands all around it, providing many lines of electrical contact with the mating pin, as opposed to a few "high spots" on a conventional contact.

The lower contact resistance of the Green Connect hyperboloid contact reduces heat build-up allowing the contacts able to handle far greater current in smaller contact assemblies without adversely effecting temperature rise.

Thanks to the improved crimp design of the socket offering an increased contact area between the contact body and the multi-stranded cable, Hypertac Green Connect™ solution can offer an unrivalled low contact resistance

Contact material, finish and geometry can all be varied, as well as the number of socket wires, wire thickness, wire length, angle and tension – enabling a bias towards high mating cycles and endurance, or towards pure electrical conductivity.

Designed for DC ultrafast high-power charging requiring superior and long term performance in boost mode

Features & Benefits

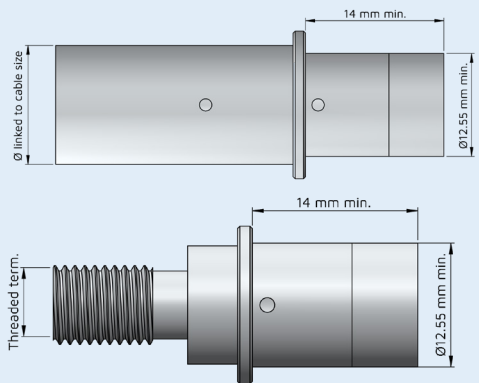
- Unrivalled premium hyperboloid contact designed to IEC62196 and SAE J1772.
- High current carrying capacity (300 Amps with a temperature rise < 50°C) capable of up to 90% energy transfer at 500 Amp boost mode even after 10,000 insertion/withdrawal cycles when compared with other technologies.
- Low Contact Resistance from 25 $\mu\Omega$ (40 $\mu\Omega$ after aging)
- Up to 60,000 mating cycles and low insertion and extraction force
- Improved crimp design
- Self cleaning contact action
- Sizes of crimp and lug terminations can be modified upon request
- RoHS and REACH compliant. No SVHC and Beryllium copper used

Hypertac Green Connect™

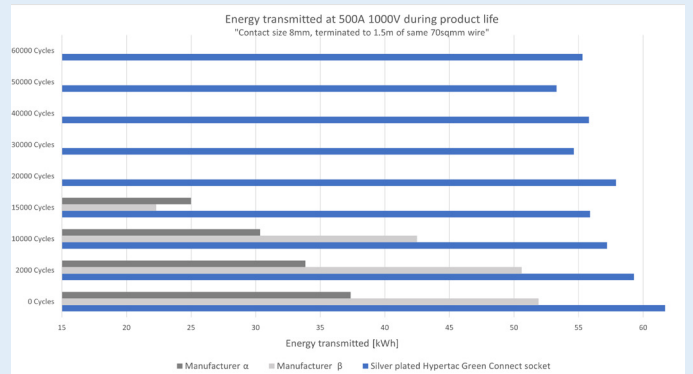
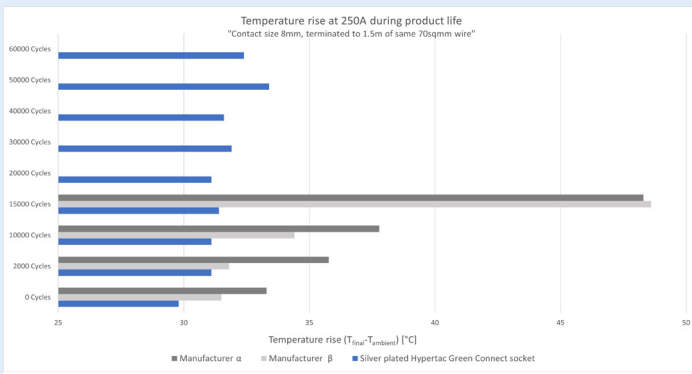
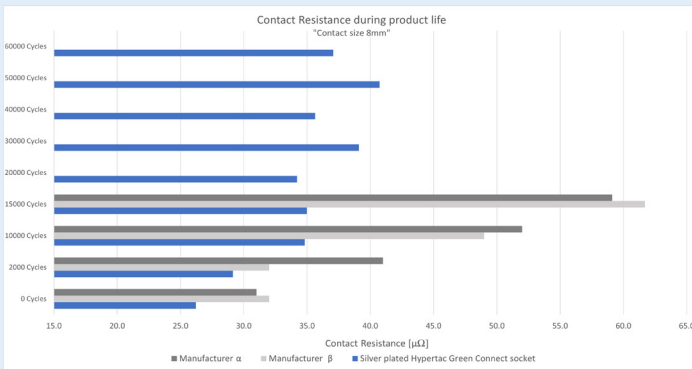
Temperature rise tests have demonstrated that the hyperboloid contact can handle higher current and generate less heat under load than conventional contacts.

It also provides lower and more stable contact resistance at any stage of the product life (i.e. both at 0 and at 10k cycles Hypertac Green Connect's performance keeps a stable trend than conventional contacts which values are double).

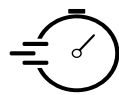
Finally it maintains high current carrying capacity at 500 Amp in boost mode throughout the entire product life providing 90% more energy after 10k mating cycles.



Sizes of crimp and lug terminations can be modified upon request



Hypertac Green Connect™ Contact



Reduction of charging time, Charge point operators (CPOs) will be able to generate more revenue by charging greater number of cars.



Low temperature rise enabling longer energy transfer during boost mode time



Hyperboloid design with increased points of contacts reduce electrical resistance.



Reduce the OPEX through lower spare parts and service cost



All the above means: easy to use, uncompromised performance with lowest lifecycle cost (TOTEX)!