

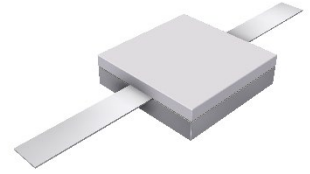
## ORDERING INFORMATION

## PART IDENTIFIER:

81-3034TC-X-X



Tolerance  
Resistance Value



## SPECIFICATIONS

## 1. ELECTRICAL:

Resistance Range:	10 - 400 OHMS
Resistance Tolerance:	±5% standard 1% and 2% available
Typical Capacitance:	0.7 pF
Input Power CW:	30 watts @ 100°C heat sink, derated linearly to zero power at 150°C
Peak Power:	300 watts (based on 10us pulse width and 1% duty cycle)

## 2. ENVIRONMENTAL:

Operating Temperature:	-55°C to +150°C
Non-operating Temperature:	-65°C to +150°C
Temperature Coefficient:	+/-200 PPM / °C max

## 3. MARKING:

Unit Marking:	Logo and Resistance Value
---------------	---------------------------

## 4. QUALITY ASSURANCE:

Visual and Mechanical Inspection:	Per 824W107
DC Resistance Check:	100% DC Resistance Check
Data Retention:	Standard

## 5. PACKAGING:

Standard Packaging:	Tray
---------------------	------

## 6. MECHANICAL:

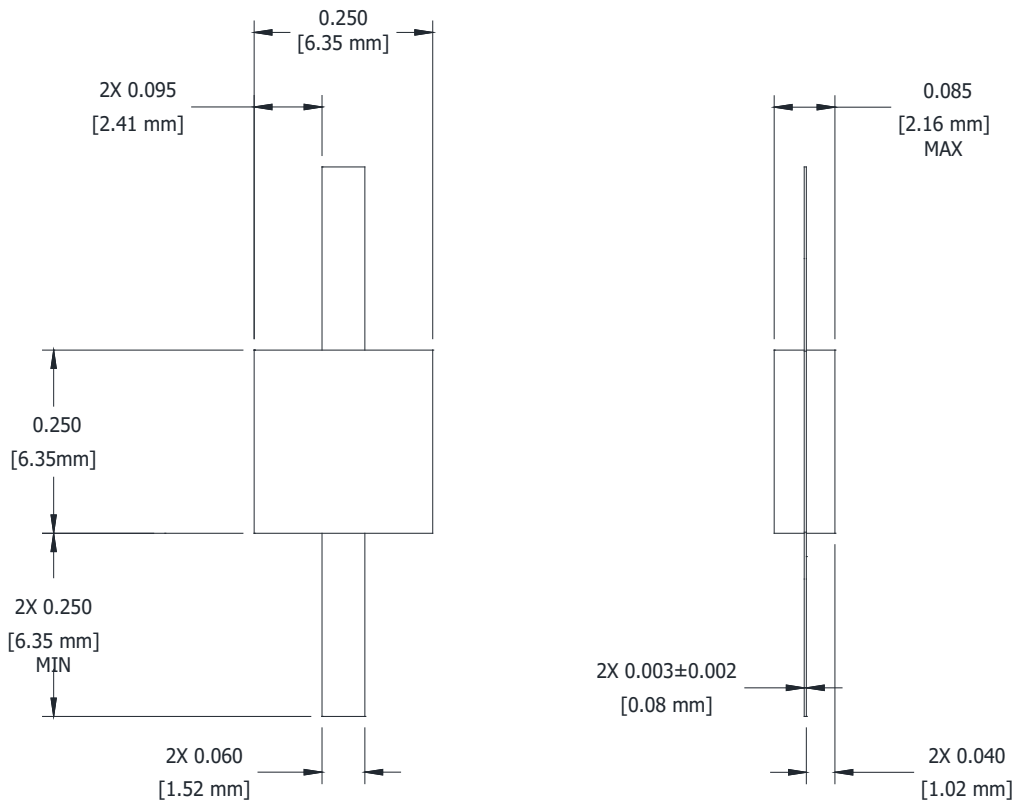
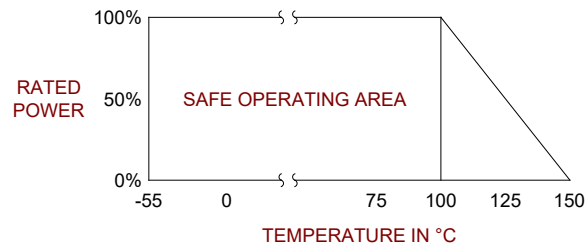
Substrate Material:	Beryllium Oxide
Resistive Film:	Thin Film
Cover Material:	Alumina
Tab Material:	Beryllium Copper
Tab Finish:	Tin/Lead
Metric Dimensions:	Provided for reference only.

RESISTOR TAB AND COVER 30 WATT

DATASHEET PART SERIES: 81-3034TC-X-X

Sheet 2 of 2  
Doc# 81-3034TC

ECO-083524  
Revision -



Unless Otherwise Specified: TOLERANCE: X.XX = ± 0.02 X.XXX = ± 0.010