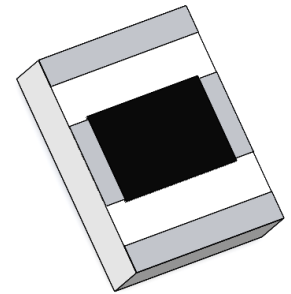
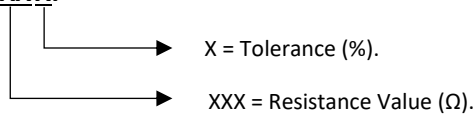


ORDERING INFORMATION

PART IDENTIFIER: CRHA1216XXXXF



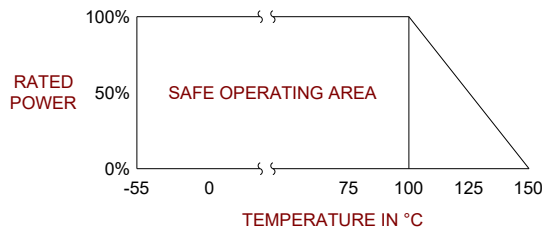
ASSEMBLY DWG: 1102554

SPECIFICATIONS

1.0 ELECTRICAL

Frequency Range: DC –20GHz.
 Resistance Range: 50 & 100 Ω. (For other values, consult with Engineering)
 Resistance Tolerance: ± 2% or ± 5%.
 Temperature Coefficient of Resistance: ± 200 PPM/ °C Max.
 12.5 Watts.

Input Power CW:



Peak Power: 125 Watts, 10 μs pulse width, 1% duty cycle.

2.0 ENVIRONMENTAL

Operating Temperature: -55°C to +150°C.
 Non-operating Temperature: -65°C to +150°C.

3.0 MARKING

Unit Marking: Dot Marking, OHMS Value.

4.0 QUALITY ASSURANCE

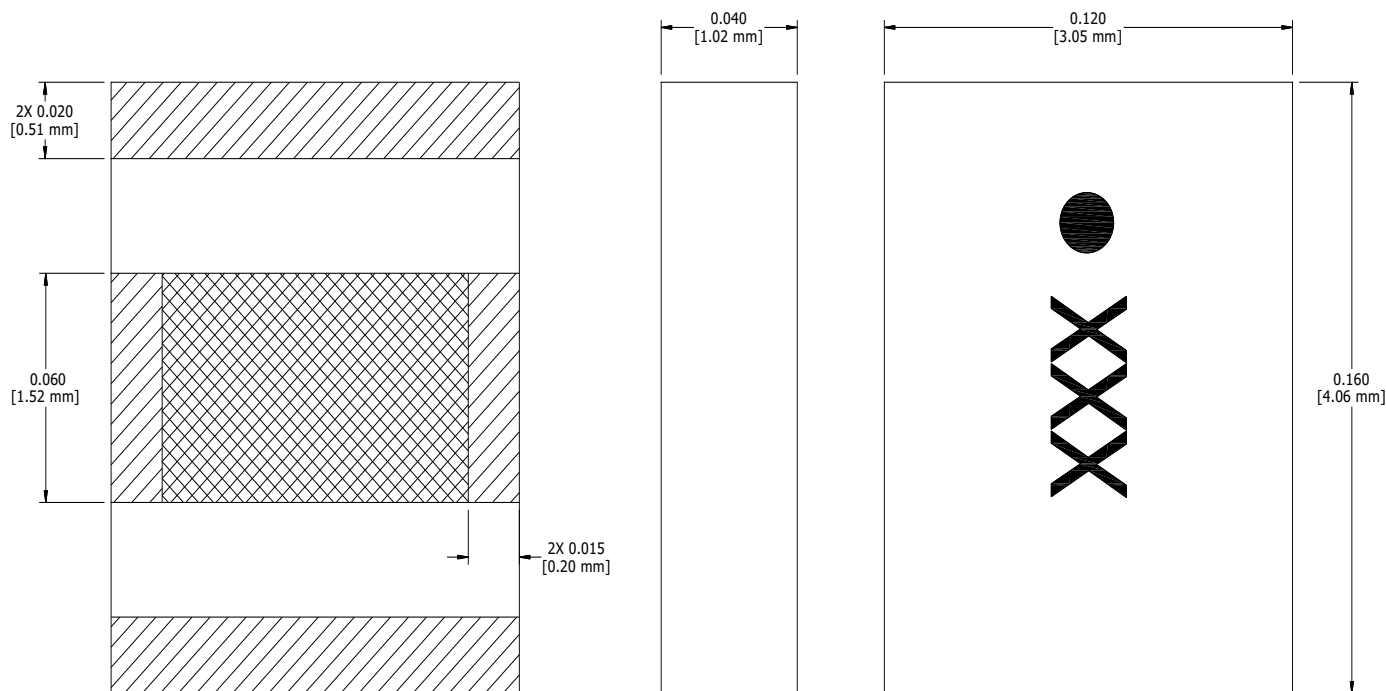
Visual and Mechanical Inspection: Per 824W107.
 DC Resistance Check: 100% DC Resistance Check.
 Data Retention: Standard.

5.0 PACKAGING

Standard Packaging: Tape and Reel.

6.0 MECHANICAL

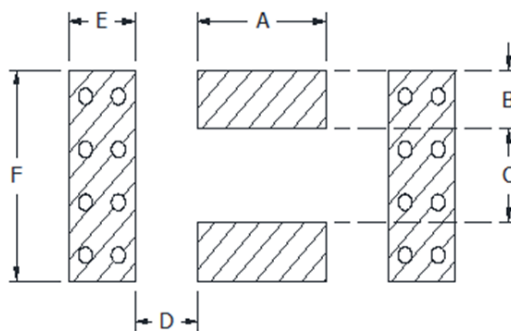
Substrate Material: ALN.
 Resistive Film: Thick Film.
 Terminal Material: Thick Film, Silver/Nickel Plating.
 Metric Dimensions: Provided for reference only.



Note: Specifications are subject to change.

Unless Otherwise Specified: TOLERANCE: X.XX = ± 0.01 X.XXX = ± 0.002.

7.0 SUGGESTED MOUNTING FOOTPRINT



Part Number	Inches						mm					
	A	B	C	D	E	F	A	B	C	D	E	F
CRHA1216XXX5F	0.065	0.017	0.090	0.030	0.025	0.125	1.651	0.43	2.29	0.76	0.64	3.18