

ORDERING INFORMATION**PART IDENTIFIER: CT2335H****SPECIFICATIONS****1. ELECTRICAL:**

Nominal Impedance:	50 Ω .
Frequency Range:	DC – 8.0 GHz.
VSWR:	1.25:1 Max.
Power Rating:	100 Watts.
DC Resistance:	50 Ω \pm 2%.

2. ENVIRONMENTAL:

Operating Temperature:	-55°C To +125°C.
Non-operating Temperature:	-65°C to +150°C.
Temperature Coefficient:	+/-200 PPM / °C max.

3. MARKING:

Unit Marking:	No Marking.
---------------	-------------

4. QUALITY ASSURANCE:

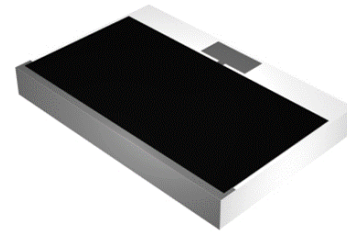
Visual and Mechanical Inspection:	Per 824W107.
DC Resistance Check:	100% DC Resistance Check.
Electrical:	VSWR Sample inspect Per MIL-STD-105, Level II, 1.0% AQL..
Data Retention:	Standard.

5. PACKAGING:

Standard Packaging:	Tape and Reel.
Optional:	AVAILABLE UPON REQUEST.

6. MECHANICAL:

Substrate Material:	Beryllium Oxide.
Resistive Film:	Thick Film.
Terminal Material:	Thick Film.
Metric Dimensions:	Provided for reference only.

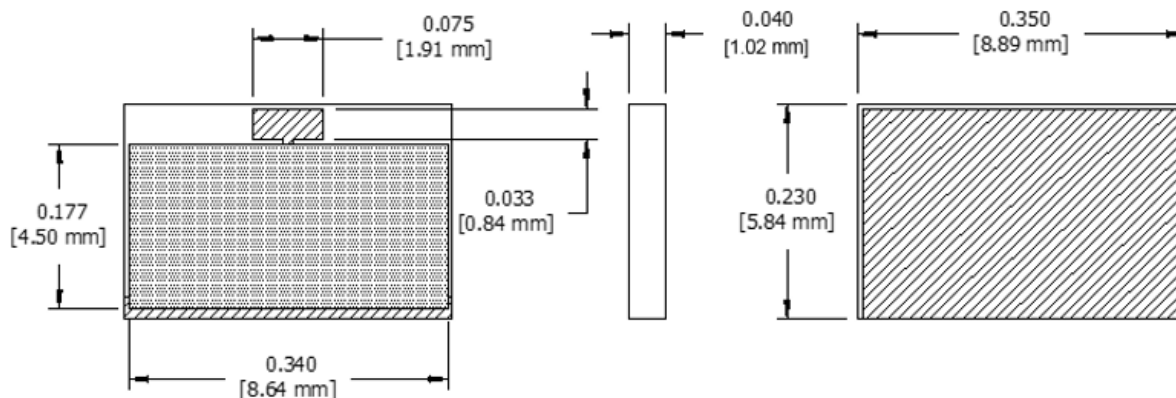
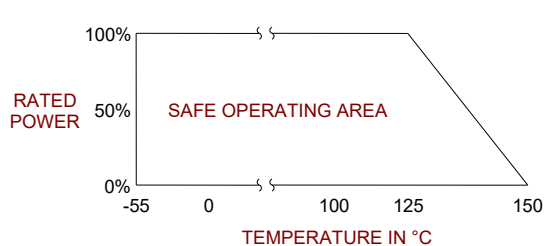


TERMINATION CHIP 100 WATT

DATASHEET PART SERIES: CT2335H

Sheet 2 of 2
Doc# CT2335H

ECO-083989
Revision B



Unless Otherwise Specified: TOLERANCE: X.XX = ± 0.01 X.XXX = ± 0.005.