

TERMINATION TAB & COVER 125 WATT



DATA SHEET

PART SERIES: 82-7013TC

SHEET 1 OF 2
Dwg 82-7013TC

EN 13-3497
Revision-

FEATURES

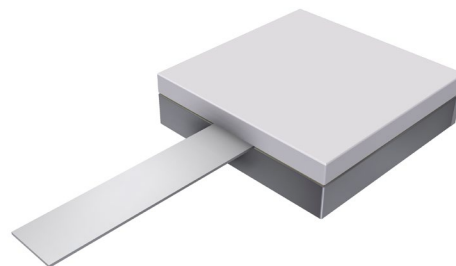
Wide Band Response
High Power
Direct Attached
Low VSWR
Easy Installation
Excellent Heat Transfer

APPLICATIONS

Mobile Networks
Broadcast
High Power Amplifiers
Isolators
Military
Instrumentation

GENERAL DESCRIPTION

EMC Technology offers the widest selection of flangeless terminations worldwide. Tab and cover components offer the highest performance of any style of termination component.



ORDERING INFORMATION

Part Identifier: **82-7013TC**

SPECIFICATIONS

1.0 ELECTRICAL

| | |
|--------------------|-----------------------------------------------------------------------|
| Nominal Impedance: | 50 ohms |
| Frequency Range: | DC - 2.7 GHz |
| VSWR: | 1.10:1 Max |
| Input Power CW: | 125 Watts @ 100°C heat sink, derated linearly to zero power and 150°C |
| Peak Power: | 1250 Watts (based on 10us pulse width and 1% duty cycle) |
| DC Resistance: | 50 Ω \pm 5% |

2.0 ENVIRONMENTAL

| | |
|----------------------------|---------------------|
| Operating Temperature: | -55°C to +150°C |
| Non-operating Temperature: | -65°C to +150°C |
| Temperature Coefficient: | +/-200 PPM / °C max |

3.0 MARKING

| | |
|---------------|-----------------------------------------------------------------|
| Unit Marking: | Logo and Part Number, legibility and permanency per MIL-STD-130 |
|---------------|-----------------------------------------------------------------|

4.0 QUALITY ASSURANCE

| | |
|-----------------------------------|--------------------------|
| Visual and Mechanical Inspection: | Per 824W107 |
| DC Resistance Check: | 100% DC Resistance Check |
| Data Retention: | Standard |

5.0 PACKAGING

| | |
|---------------------|----------------|
| Standard Packaging: | Tray Packaging |
|---------------------|----------------|

TERMINATION TAB & COVER 125 WATT



DATA SHEET

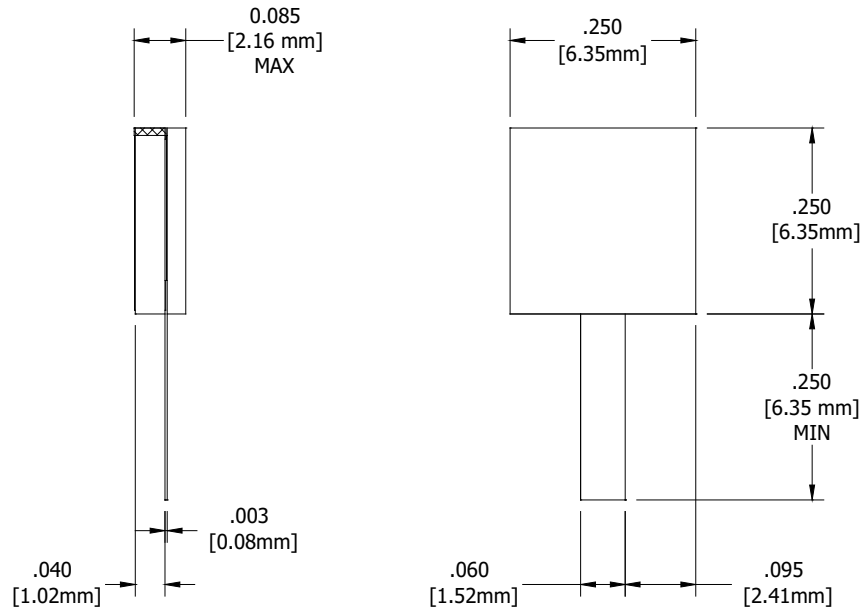
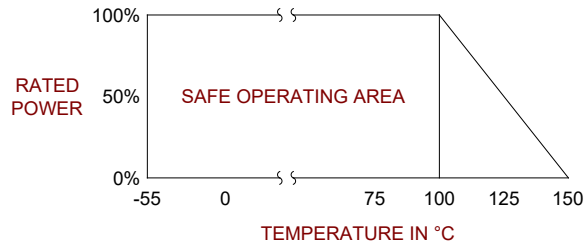
PART SERIES: 82-7013TC

SHEET 2 OF 2
Dwg 82-7013TC

EN 13-3497
Revision-

6.0 MECHANICAL

| | |
|---------------------|-----------------------------|
| Substrate Material: | Aluminum Nitride |
| Resistive Film: | Nichrome |
| Cover Material: | Alumina |
| Tab Material: | Beryllium Copper |
| Tab Finish: | Tin/Lead |
| Metric Dimensions: | Provided for reference only |



Unless Otherwise Specified: TOLERANCE: X.XX = ± 0.02 X.XXX = ± 0.010