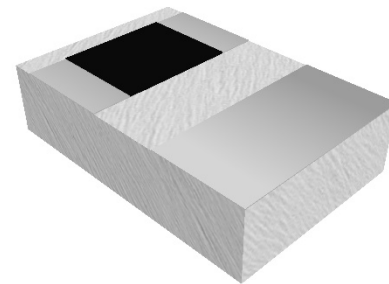
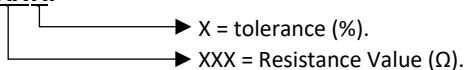


ORDERING INFORMATION

PART IDENTIFIER: CRH0406XXXXF



SPECIFICATIONS

1. ELECTRICAL:

Frequency Range:	DC - 27 GHz.
Resistance Range:	10 - 500 Ω.
Resistance Tolerance:	± 5%.
Temperature Coefficient of Resistance:	± 200 PPM/°C Max.
Input Power CW:	500 mW Maximum.
Peak Power:	5W, 10µs pulse width, 1% duty cycle.

2. ENVIRONMENTAL:

Operating Temperature:	-55°C to +150°C.
Non-operating Temperature:	-65°C to +150°C.

3. MARKING:

Unit Marking:	Dot Marking, OHMS Value.
---------------	--------------------------

4. QUALITY ASSURANCE:

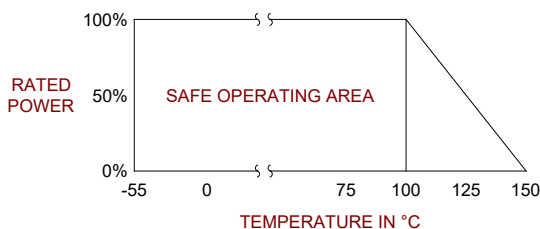
Visual and Mechanical Inspection:	Per 824W107.
DC Resistance Check:	100% DC Resistance Check.
Data Retention:	Standard.

5. PACKAGING:

Standard Packaging:	Tape and Reel.
---------------------	----------------

6. MECHANICAL:

Substrate Material:	Alumina, 96%.
Resistive Film:	Thick Film.
Terminal Material:	Thick Film, Silver Plated.
Metric Dimensions:	Provided for reference only.

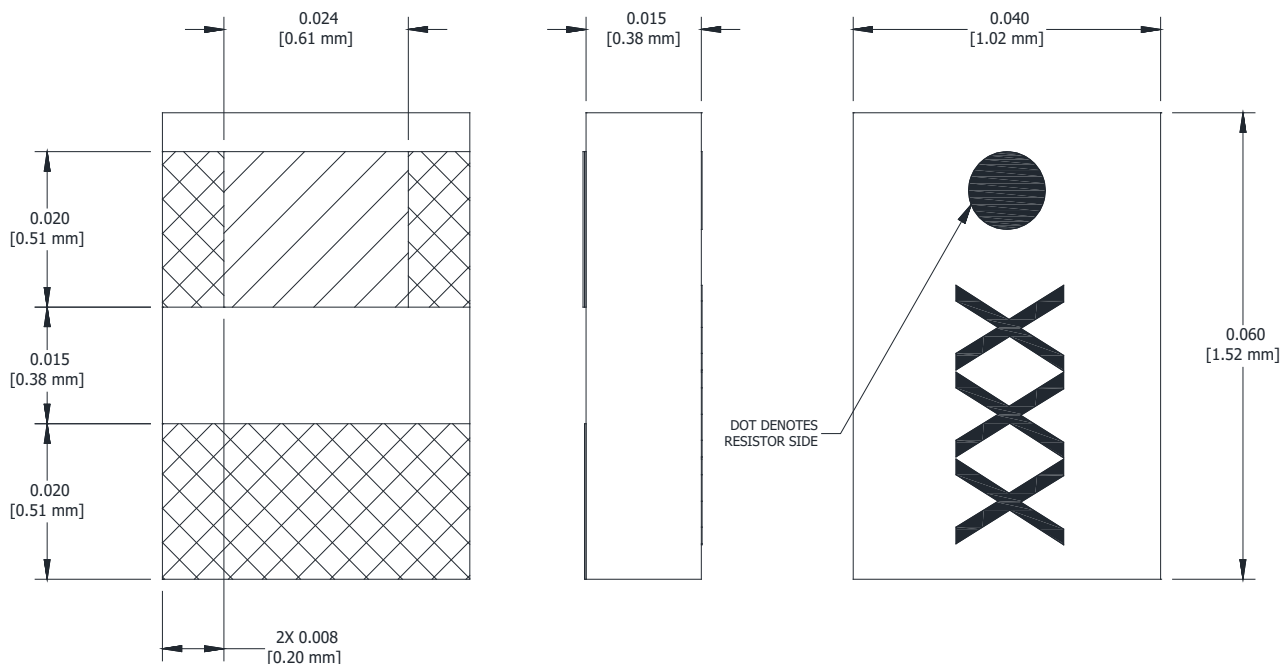


**RESISTOR CHIP OUTRIGGER 500 mW**

**DATASHEET PART SERIES: CRH0406XXXXF**

**Sheet 2 of 2**  
**Doc# CRH0406XXXXF-1014105**

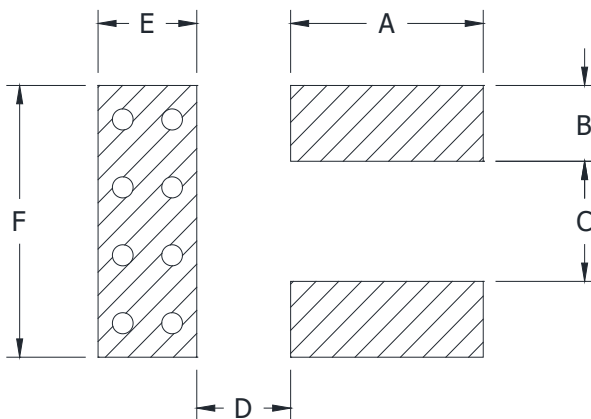
**ECO-083190**  
**Revision C**



Note: Specifications are subject to change.

Unless Otherwise Specified: TOLERANCE: X.XX = ± 0.01 X.XXX = ± 0.005.

**7. SUGGESTED MOUNTING FOOTPRINT:**



DIMENSION											
INCHES						METRIC (mm)					
A	B	C	D	E	F	A	B	C	D	E	F
0.025	0.010	0.024	0.015	0.025	0.045	0.635	0.254	0.610	0.381	0.635	0.1143