



RESISTOR CHIP OUTRIGGER 1.5 W

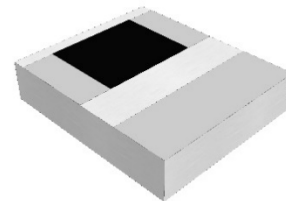
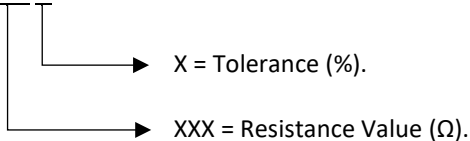
DATASHEET PART SERIES: CRH0607XXXXF

Sheet 1 of 2
Doc# CRH0607XXXXF-1015335

ECO-085080
Revision A

ORDERING INFORMATION

PART IDENTIFIER: CRH0607 XXX XF



SPECIFICATIONS

1.0 ELECTRICAL

Table with 2 columns: Specification Name and Value. Includes Frequency Range (DC - 27 GHz), Resistance Range (10 - 500 Ω), Resistance Tolerance (± 5 %), Temperature Coefficient of Resistance (± 200 PPM/ °C Max), Input Power CW (1.5 Watt), and Peak Power (15W, 10µs pulse width, 1% duty cycle).

2.0 ENVIRONMENTAL

Table with 2 columns: Specification Name and Value. Includes Operating Temperature (-55°C to +150°C) and Non-operating Temperature (-65°C to +150°C).

3.0 MARKING

Table with 2 columns: Specification Name and Value. Includes Unit Marking (Dot Marking, OHMS Value).

4.0 QUALITY ASSURANCE

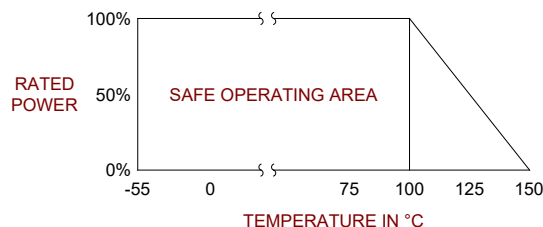
Table with 2 columns: Specification Name and Value. Includes Visual and Mechanical Inspection (Per 824W107), DC Resistance Check (100% DC Resistance Check), and Data Retention (Standard).

5.0 PACKAGING

Table with 2 columns: Specification Name and Value. Includes Standard Packaging (Tape and Reel).

6.0 MECHANICAL

Table with 2 columns: Specification Name and Value. Includes Substrate Material (Alumina, 96%), Resistive Film (Thick Film), Terminal Material (Thick Film, Silver Plated), and Metric Dimensions (Provided for reference only).



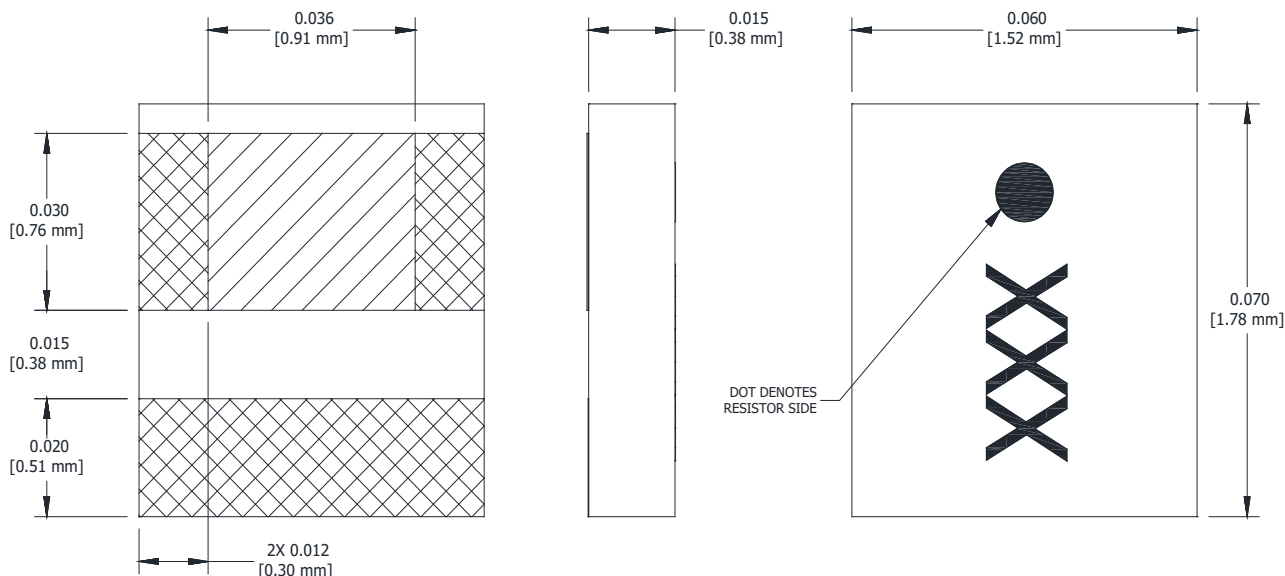


RESISTOR CHIP OUTRIGGER 1.5 W

DATASHEET PART SERIES: CRH0607XXXXF

Sheet 2 of 2
Doc# CRH0607XXXXF-1015335

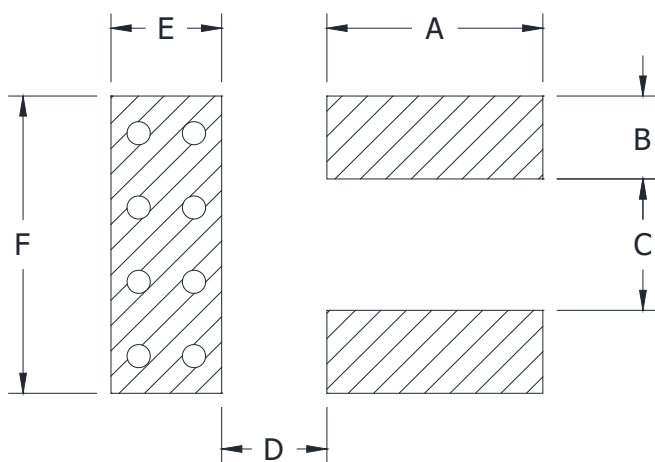
ECO-085080
Revision A



Note: Specifications are subject to change.

Unless Otherwise Specified: TOLERANCE: X.XX = ± 0.01 X.XXX = ± 0.005

7.0 SUGGESTED MOUNTING FOOTPRINT



DIMENSION											
INCHES						METRIC (mm)					
A	B	C	D	E	F	A	B	C	D	E	F
0.035	0.014	0.036	0.015	0.025	0.065	0.889	0.356	0.914	0.381	0.635	01.651