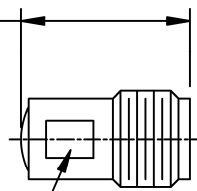


NOTES:

1. UNLESS OTHERWISE SPECIFIED, TOLERANCES ARE  $\pm .010"$  (.254mm).

DRAWING NO.	REV.
12-0101	B

.440 MAX  
(11.2mm)



.187 WRENCH FLAT  
(4.75mm)

.250-36 UNS-2A  
(6.35mm MAJOR DIA)





MATERIAL:

BODY & COUPLING NUT: SS PER QQ-S-764  
CONTACT: BERYLLIUM COPPER PER QQ-C-530  
RESISTIVE FILM: NICHROME

FINISH:

BODY & CONTACT: GOLD PER MIL-G-45204  
COUPLING NUT: PASSIVATE PER QQ-P-35

				<u>UNLESS OTHERWISE SPECIFIED</u>			REFERENCE		 P.O. BOX 899 STUART, FL. 34995	
				1. DIMENSIONS ARE AFTER PLATING 2. DIAMETERS ON COMMON Q TO BE CONCENTRIC WITHIN ____ T.I.R. 3. SURFACE ROUGHNESS 63/√ 4. CORNERS AND EDGES .005 R. MAX 5. REMOVE BURRS AND BREAK SHARP EDGES			CATALOG			
				<u>TOLERANCES</u>			MATERIAL		TERMINATION, COAXIAL SMA	
				DECIMAL FRACTION ANGLES .X ± ± .XX ± ± .XXX ± ±			FINISH		DRAWING NO.	
B	EN#09-F0709	07/09		ALL DIMENSIONS ARE IN INCHES			SCALE		REV.	
N/C	RLSE#02432	07/98					2X		CAGE CODE ID NO.	
REV.	DESCRIPTION	DATE	APPR.				2Y194		B	
							SIZE		DRAWN BLP	
							A		07/09/98	
							APPR.		SHEET 1 OF 2	
							CHK			

		DRAWING NO. 12-0101		REV B	
REQUIREMENTS	RATING	REQUIREMENTS	RATING		
NOMINAL IMPEDANCE (OHMS)	50	VIBRATION	MIL-STD-202 METHOD 204 COND. D (20 G's)		
FREQUENCY RANGE (GHz)	DC-18.0				
TEMPERATURE COEFFICIENT	200 PPM	SHOCK	MIL-STD-202 METHOD 213 COND. I (100 G's)		
OPERATING TEMPERATURE (°C)	-55 TO +125				
VSWR	1.15:1 MAX	THERMAL SHOCK	MIL-STD-202 METHOD 107 COND. B (-65 TO +125 °C)		
AVERAGE POWER (WATTS)	1.0				
DC RESISTANCE	50 OHMS ± 5%	BAROMETRIC PRESSURE	MIL-STD-202 METHOD 105 COND. C		
		INTERFACE DIMENSIONS	MIL-STD-348 SMA SERIES		
<p>AVERAGE POWER DERATING</p>		TORQUE REQUIREMENT	MIL-D-39030/3 SMA SERIES 7-10 IN/LBS (PER PAIR)		
TITLE TERMINATION, COAXIAL SMA		 P.O. BOX 899 STUART, FL. 34995	DRAWN BLP 07/09/98	DRAWING NO. 12-0101	REV B
			SHEET 2 OF 2		