

NOTES:

1. UNLESS OTHERWISE SPECIFIED, TOLERANCES ARE $\pm .010$ " (.254mm).

CAD#120103_2

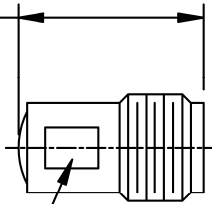
DRAWING NO.

12-0103

REV.

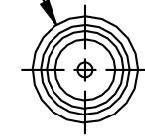
N/C

.440 MAX
(11.2mm)



.187 WRENCH FLAT
(4.75mm)

.250-36 UNS-2A
(6.35mm MAJOR DIA)




MATERIAL:

BODY & COUPLING NUT: SS PER QQ-S-764
CONTACT: BERYLLIUM COPPER PER QQ-C-530
RESISTIVE FILM: NICHROME

FINISH:

BODY & CONTACT: GOLD PER MIL-G-45204
COUPLING NUT: PASSIVATE PER QQ-P-35

				<p align="center"><u>UNLESS OTHERWISE SPECIFIED</u></p> <p>1. DIMENSIONS ARE AFTER PLATING</p> <p>2. DIAMETERS ON COMMON ϕ TO BE CONCENTRIC WITHIN ____ T.I.R.</p> <p>3. SURFACE ROUGHNESS $\sqrt{63}$</p> <p>4. CORNERS AND EDGES .005 R. MAX</p> <p>5. REMOVE BURRS AND BREAK SHARP EDGES</p>	REFERENCE	CATALOG		 <p>P.O. BOX 899 STUART, FL. 34995</p>		
					MATERIAL	-			TITLE	TERMINATION, COAXIAL SMA
					TOLERANCES	SCALE	CAGE CODE ID NO.	SIZE	DRAWING NO.	REV.
					DECIMAL FRACTION ANGLES	2X	2Y194	A	12-0103	N/C
					<p>.X \pm</p> <p>.XX \pm</p> <p>.XXX \pm</p> <p>ALL DIMENSIONS ARE IN INCHES</p>	APPR.	CHK	DRAWN	BLP 07/09/98	SHEET 1 OF 2

N/C	RLSE#02432	07/98	
REV.	DESCRIPTION	DATE	APPR.

CAD#120103_3

DRAWING NO.

12-0103

REV

N/C

REQUIREMENTS	RATING	REQUIREMENTS	RATING
NOMINAL IMPEDANCE (OHMS)	50	VIBRATION	MIL-STD-202 METHOD 204 COND. D (20 G's)
FREQUENCY RANGE (GHz)	DC-26.5		
TEMPERATURE COEFFICIENT	200 PPM	SHOCK	MIL-STD-202 METHOD 213 COND. I (100 G's)
OPERATING TEMPERATURE (°C)	-55 TO +125		
VSWR	1.18:1 MAX	THERMAL SHOCK	MIL-STD-202 METHOD 107 COND. B (-65 TO +125 °C)
AVERAGE POWER (WATTS)	1.0		
DC RESISTANCE	50 OHMS ± 5%	BAROMETRIC PRESSURE	MIL-STD-202 METHOD 105 COND. C
		INTERFACE DIMENSIONS	MIL-STD-348 SMA SERIES
<p>AVERAGE POWER DERATING</p>		TORQUE REQUIREMENT	MIL-D-39030/3 SMA SERIES 7-10 IN/LBS (PER PAIR)

TITLE TERMINATION,
COAXIAL SMA



P.O. BOX 899
STUART, FL. 34995

DRAWN BLP 07/09/98

SHEET 2 OF 2

DRAWING NO.

12-0103

REV

N/C