

**TITLE: SPECIFICATION CONTROL DRAWING**

**PART IDENTIFIER:** 54XX  
(XX) DB VALUE

**DESCRIPTION:** HIGH POWER ATTENUATOR, BERYLLIA

**ASSEMBLY DWG:** 1700324

**1.0 SPECIFICATIONS:**

- 1.1 ELECTRICAL:
  - 1.1.1 IMPEDANCE: 50Ω NOMINAL.
  - 1.1.2 FREQUENCY RANGE: DC-2.5 GHZ.
  - 1.1.3 ATTENUATION VALUES AVAILABLE: 1-20DB IN 1DB INCREMENTS.
  - 1.1.4 ATTENUATION ACCURACY @ 1 GHZ: 1 - 10 DB, ±0.5 DB.  
11 - 20 DB, ±1.0 DB.
  - 1.1.5 POWER DISSIPATION (MAX @ 100°C):
    - 1.1.5.1 AVERAGE: 20 WATTS.
    - 1.1.5.2 PEAK: 200 WATTS FOR 10US WIDTH @ 1% DUTY CYCLE.
  - 1.1.6 VSWR: DC - 1 GHZ - 1.15 MAX.  
1.1 - 2.5 GHZ - 1.35 MAX.
- 1.2 MECHANICAL:
  - 1.2.1 OUTLINE DWG: SEE SHEET 2.
- 1.3 ENVIRONMENTAL:
  - 1.3.1 TEMPERATURE RANGE:
    - 1.3.1.1 STORAGE: -65°C TO +150°C.
    - 1.3.1.2 OPERATING: -55°C TO +150°C.

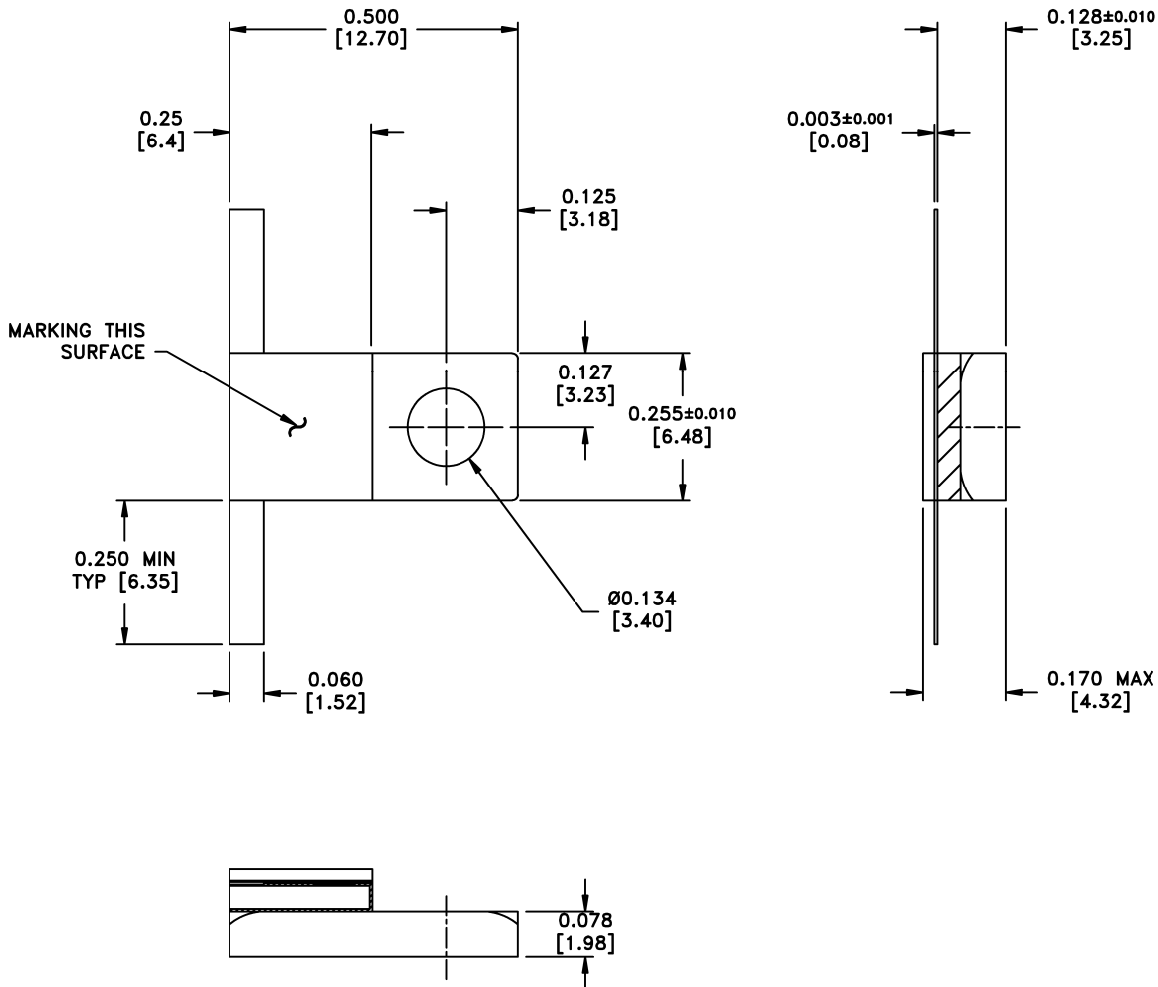
**2.0 UNIT MARKING:** LOGO AND PART IDENTIFIER  
LEGIBILITY AND PERMANENCY PER MIL-STD-130.

**3.0 QUALITY ASSURANCE:**

- 3.1 SAMPLE INSPECT PER ANSI/ASQC Z1.4, GENERAL INSPECTION, LEVEL II, AQL=1.0.
  - 3.1.1 VISUAL AND MECHANICAL EXAMINATION FOR CONFORMANCE TO MIL-PRF-55342 AND CONTROL DRAWING REQUIREMENTS.
- 3.2 INSPECTION IN ACCORDANCE WITH 824W170 AND 824F036 FOR COMMERCIAL GRADE PRODUCT.
- 3.3 DATA REQUIREMENTS:
  - 3.2.1 NO TEST DATA REQUIRED FOR CUSTOMER.
  - 3.2.2 DATA RETENTION – 24 MONTHS.

**4.0 PACKAGING:** STANDARD PACK PER 755W002.

EMC TECHNOLOGY 8851 SW OLD KANSAS AVE. STUART, FL 34997	<b>CAGE CODE # 24602</b>		<b>DWG #</b>	100115000
	<b>CHANGE NOTICE</b>	EN 10-E0640	<b>REV LVL</b>	G
			<b>SHEET</b>	1 OF 2



**MECHANICAL SPECIFICATIONS:**

CHIP:  
 MATERIAL - BERYLLIA, ASTM F356.  
 TOP PLATE:  
 MATERIAL - ALUMINA, MIL-I-10.  
 TABS:  
 MATERIAL - BRASS, ASTM B36.  
 FINISH - GOLD, MIL-G-45204, TYPE II, CLASS 1.  
 HEAT SINK:  
 MATERIAL - COPPER, ASTM B187.  
 FINISH - NICKEL, QQ-N-290.  
 ALLOW ±0.010 ON TOP PLATE FOR MISALIGNMENT.

METRIC EQUIVALENTS GIVEN IN [mm]  
 FOR REFERENCE INFORMATION ONLY



8851 SW OLD KANSAS AVE  
 STUART, FL 34997  
 PHONE NO. (772)286-9300  
 FAX NO. (772)283-5286

UNLESS OTHERWISE SPECIFIED DIMENSIONS ARE IN INCHES  
**TOLERANCES**  
 FRACT --- ---  
 ANG --- ---  
 XX ±0.01  
 XXX ±0.005  
 XXXX --- ---

THESE DRAWINGS AND SPECIFICATIONS ARE THE PROPERTY OF EMC TECHNOLOGY INC AND SHALL NOT BE DUPLICATED OR USED AS BASIS FOR THE MANUFACTURE OR SALE OF PARTS OR DEVICES WITHOUT PERMISSION.

CAGE CODE <b>24602</b>	SCALE <b>1:1</b>	DRAWN BY <b>JG 4/29/10</b>	CHECKED BY	APPROVED BY
REV <b>G</b>	CHANGE NOTICE <b>EN 10-E0640</b>	DRAWING NO <b>1001155000</b>	SHEET <b>2 OF 2</b>	