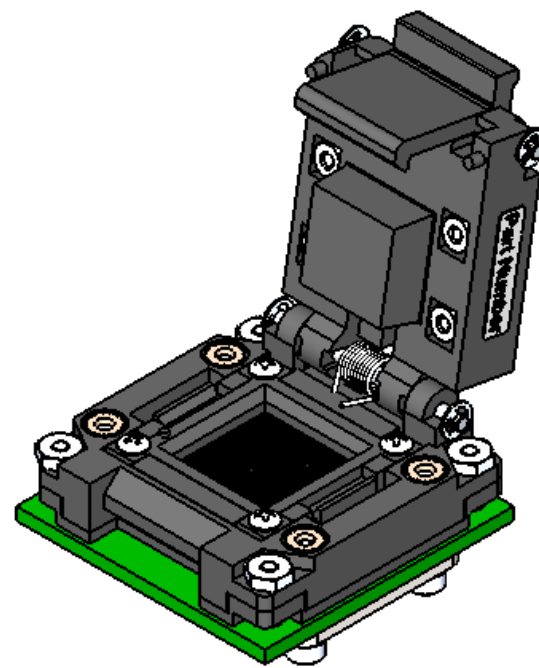
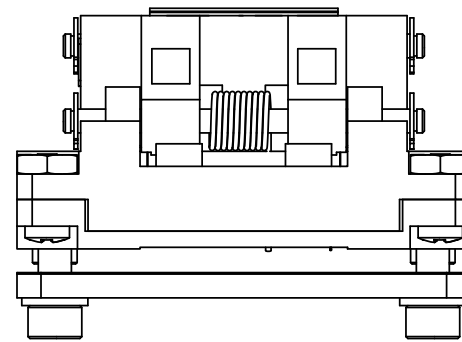
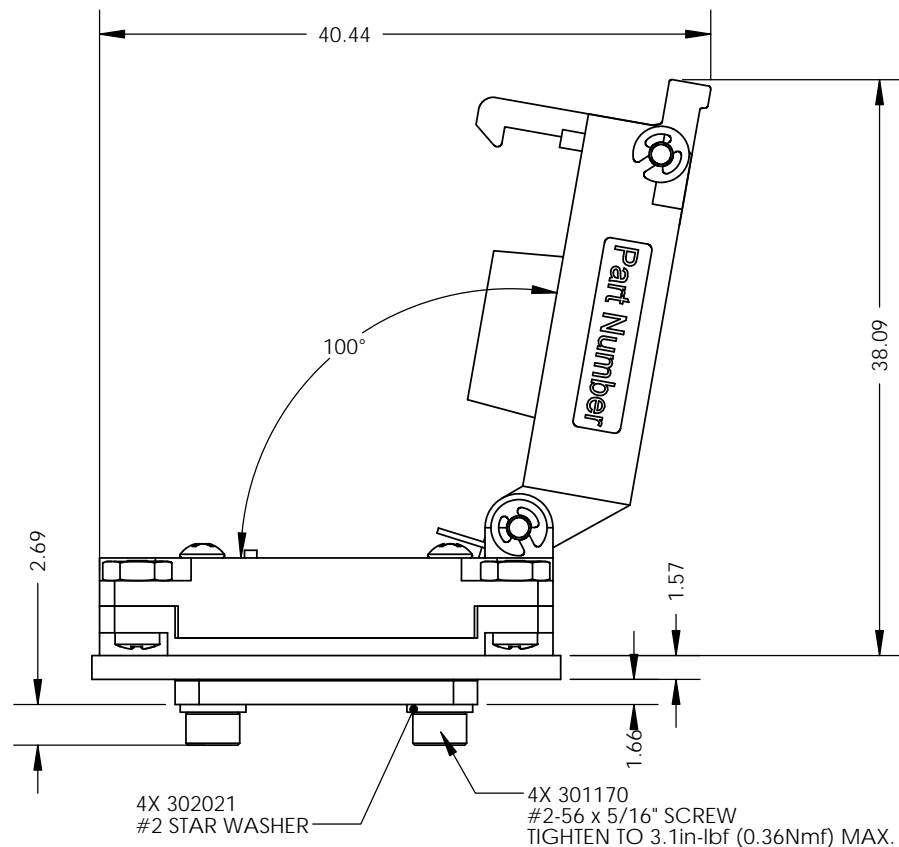
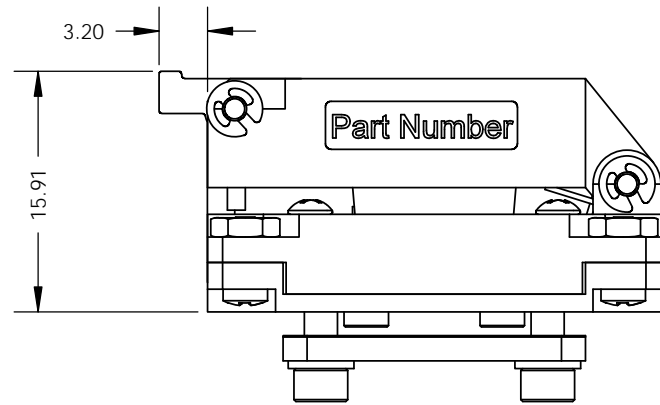
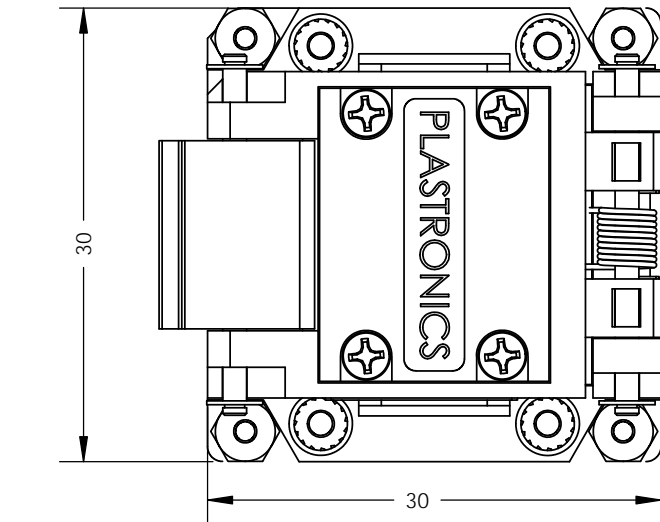


DATE	DRN
7/8/2013	JMR



- FEATURES:**
- 576 X H038DL2A CONTACTS
 - 24X24MM GUIDE PLATE

NOTES:

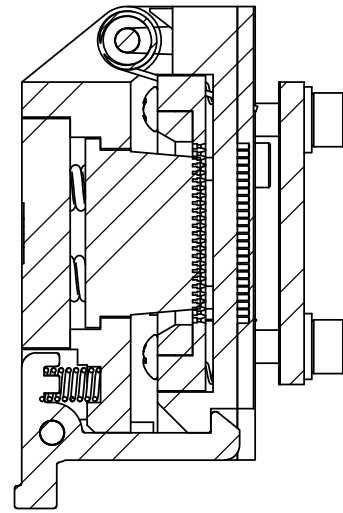
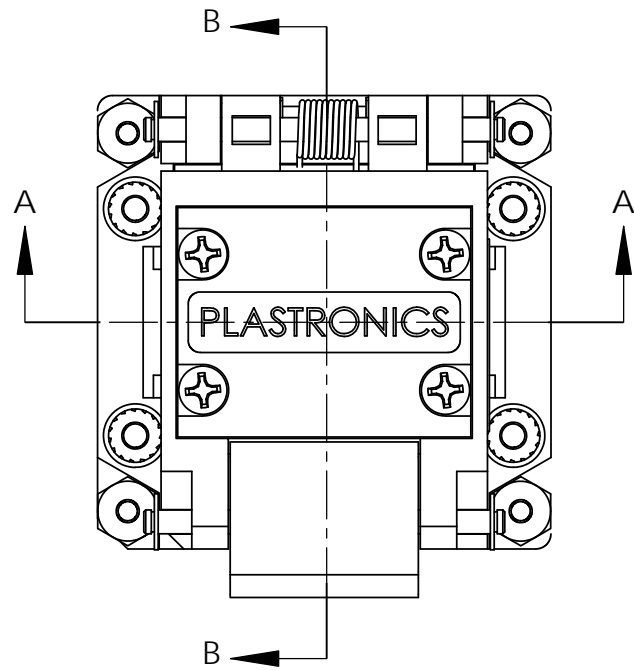
1. THIS SOCKET USES H033DL2A CONTACTS
2. BALL SIZE RANGES FROM 0.40 TO 0.20
3. PLASTIC: BLACK PEI
4. METAL COMPONENTS: STAINLESS STEEL
5. CONTACT: CuBe, 30MICROINCHES OF Au OVER Ni ALL OVER
6. ALL CONTACT HOLES MOLDED
7. DEVICE SIZES: 2x2 THRU 12X12
8. 24x24 MAX GRID ON 0.5MM PITCH
9. SUGGESTED PAD PLATING IS 30 uIN HARD Au OVER 300uIN Ni OVER 1 OZ cU.
10. ALL BOARD PADS SHOULD BE THE SAME THICKNESS.
11. PCB LAYOUT TOLERANCE IS +/- .05MM UNLESS OTHERWISE NOTED.
12. TOOL REQUIRED FOR ASSEMBLY: 5/64" ALLEN TORQUE DRIVER.
13. CONTACT FORCE IS 15g PER PIN.

P/N: 576BHM50A01

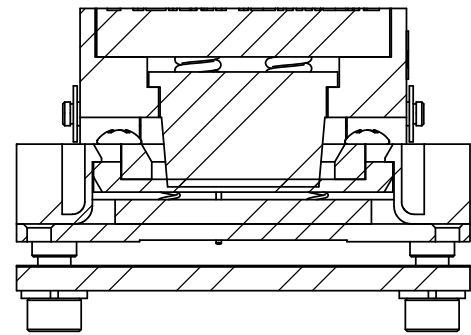
PROPRIETARY

THIS DRAWING IS SUBJECT TO CHANGE WITHOUT NOTICE. PLEASE REQUEST A CURRENT DRAWING WHEN LAYING OUT BOARDS.	SIZE: B	NAME	DATE	DWG NO. S576BHM50A01	SHEET 1 OF 2
	DRAWN	JMR	07/08/2013	TITLE: TITLE HERE	
SCALE: VARIOUS	CHECKED				
UNITS: mmgs	ENG APPR.				
SOLIDWORKS CREATED FILE	MFG APPR.				

PLASTRONICS 2601 Texas Drive
SOCKETS & CONNECTORS Irving, TX 75062



SECTION B-B

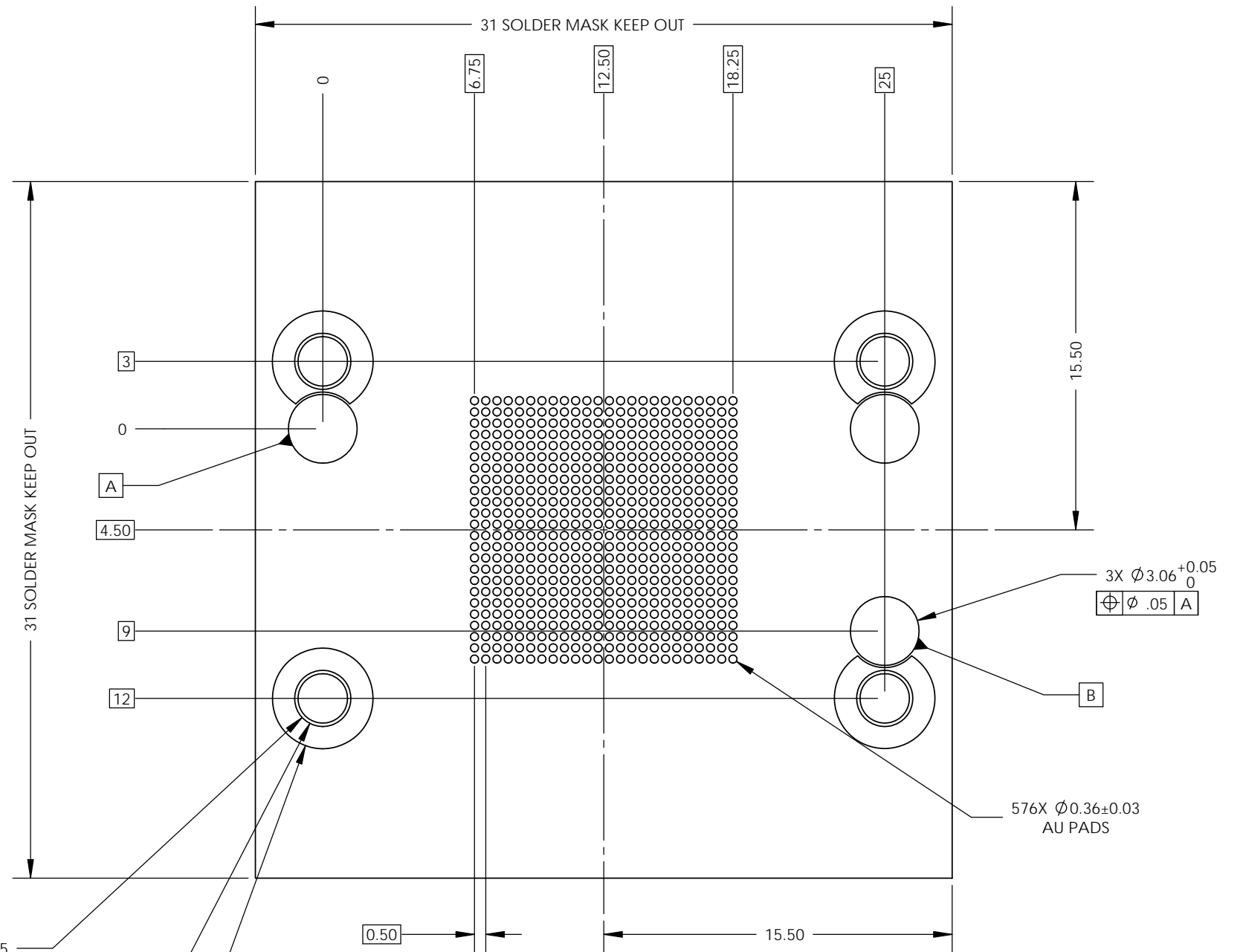


SECTION A-A

4X $\varnothing 2.50 \pm 0.025$
 $\oplus \varnothing .05$ | A | B

$\varnothing 2.50$ INNER RING Au PAD

$\varnothing 4.48$ OUTER RING Au PAD



P/N: 576BHM50A01

PROPRIETARY

THIS DRAWING IS SUBJECT TO CHANGE WITHOUT NOTICE. PLEASE REQUEST A CURRENT DRAWING WHEN LAYING OUT BOARDS.	SIZE: B	NAME	DATE	DWG NO. S576BHM50A01	SHEET 2 OF 2
	DRAWN	JMR	4/2/2013	TITLE: TITLE HERE	
	SCALE: VARIOUS	CHECKED			
	UNITS: mmgs	ENG APPR.			
SOLIDWORKS CREATED FILE	MFG APPR.				