

TITLE: SPECIFICATION CONTROL DRAWING

PART IDENTIFIER: TS0300W3 KIT

DESCRIPTION: CHIP ATTENUATOR KIT
0 THRU 10DB IN 1DB INCREMENTS, 5 PIECES EACH.

ASSEMBLY DWG: N/A

1.0 SPECIFICATIONS

1.1 ELECTRICAL:

- 1.1.1 IMPEDANCE: 50 OHMS NOMINAL.
- 1.1.2 FREQUENCY RANGE: DC-8GHZ
- 1.1.3 ATTENUATION ACCURACY: ±.5DB @ 1 GHZ.
- 1.1.4 INPUT POWER: 2 WATTS CW.
 - 1.1.4.1 FULL RATED POWER TO 125°C, DERATED LINEARLY TO 0 WATTS AT 150°C.
 - 1.1.4.2 PEAK POWER, 50 WATTS FOR 10US PULSE WIDTH @ 1% DUTY CYCLE.

1.2 MECHANICAL:

- 1.2.1 OUTLINE DWG: SEE SHEET 2.
- 1.2.2 WORKMANSHIP: PER MIL-R-55342.

1.3 ENVIRONMENTAL:

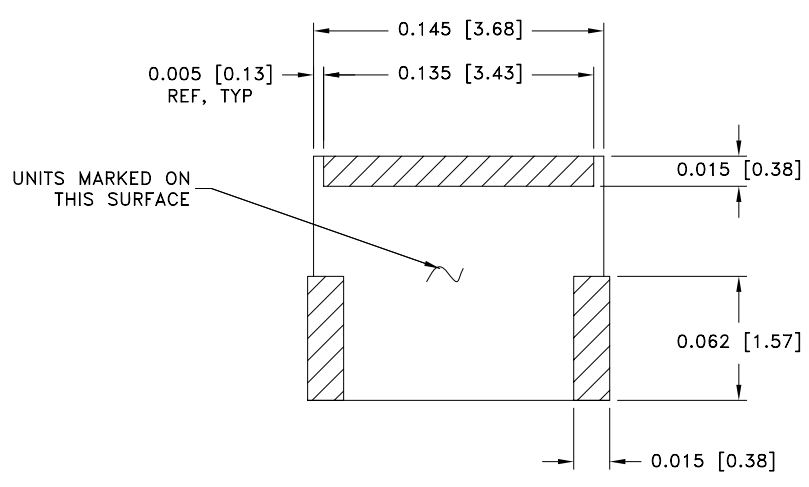
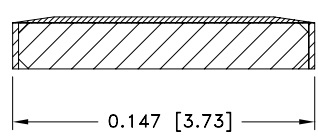
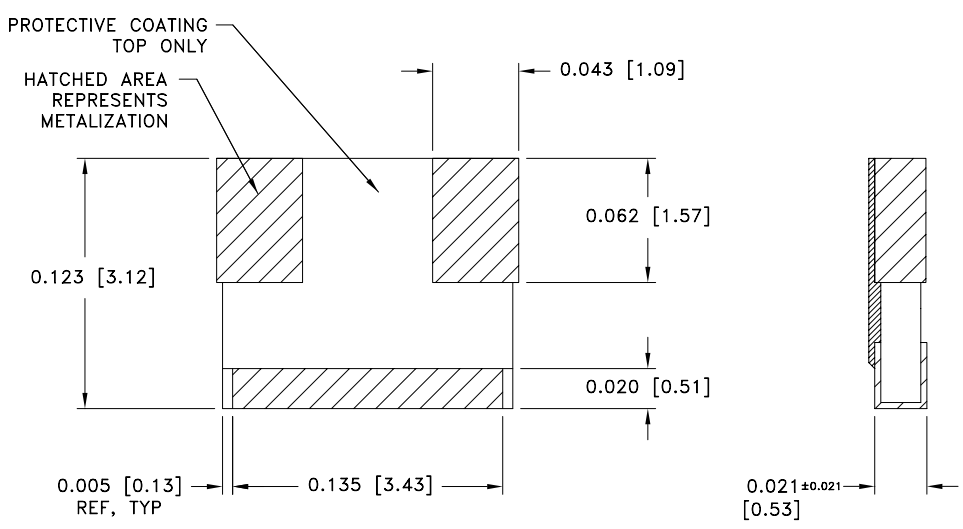
- 1.3.1 ALTITUDE:
 - 1.3.1.1 NON-OPERATING: SEA LEVEL TO 50,000 FEET.
 - 1.3.1.2 OPERATING: SEA LEVEL TO 50,000 FEET.
- 1.3.2 TEMPERATURE RANGE:
 - 1.3.2.1 NON-OPERATING: -55 C TO +150 C.
 - 1.3.2.2 OPERATING -55°C TO +150°C.
- 1.3.3 VIBRATION: PER MIL-STD-202, METHOD 204, COND. D
- 1.3.4 SHOCK: PER MIL-STD-202, METHOD 213, COND. I.
- 1.3.5 MOISTURE RESISTANCE: PER MIL-STD-202, METHOD 106 EXCEPT SUBCYCLE STEPS 7A AND 7B AND POLARIZATION AND LOAD ARE NOT APPLICABLE.

2.0 UNIT MARKING: "DB VALUE"
LEGIBILITY AND PERMANENCY PER MIL-STD-130; DB VALUE.

3.0 PACKAGING: STANDARD PACK PER 755W002.


EMC TECHNOLOGY 8851 SW OLD KANSAS AVE. STUART, FL 34997	CAGE CODE # 24602		DWG #	1005405000
	CHANGE NOTICE	EN 10-0911	REV LVL	D
			SHEET	1 OF 2

PART ID REF
TS0300W3 KIT



METRIC EQUIVALENTS ARE GIVEN FOR REFERENCE INFORMATION ONLY

MECHANICAL:
TS0300W3 CHIP ATTENUATOR.

 8851 SW OLD KANSAS AVE STUART, FL 34997 PHONE NO. (772)286-9300 FAX NO. (772)283-5286	UNLESS OTHERWISE SPECIFIED DIMENSIONS ARE IN INCHES TOLERANCES FRACT --- -- ANG --- -- XX --- -- XXX ±0.005 XXXX --- --	THESE DRAWINGS AND SPECIFICATIONS ARE THE PROPERTY OF EMC TECHNOLOGY INC AND SHALL NOT BE DUPLICATED OR USED AS BASIS FOR THE MANUFACTURE OR SALE OF PARTS OR DEVICES WITHOUT PERMISSION.				
	CAGE CODE 24602	SCALE 16:1	DRAWN BY JG 5/6/08	CHECKED BY	APPROVED BY	
	REV D	CHANGE NOTICE EN 10-0911	DRAWING NO 1005405000	SHEET 2 OF 2		